

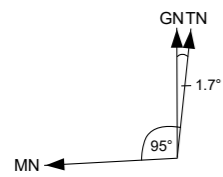
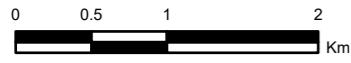
Bunger Hills Satellite Image Map

Map Series

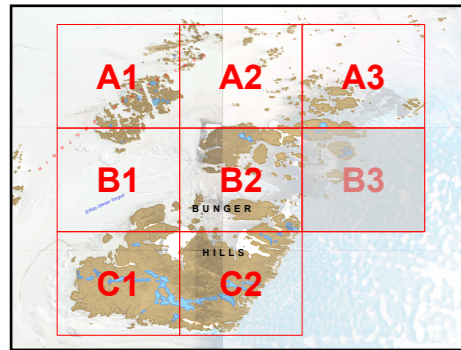
Map Sheet: B3

Horizontal Datum: WGS84
Projection: UTM 47S

Scale: 1:50,000 (Printed on A3)



True, Grid and Magnetic North are shown diagrammatically above for the centre of map sheet B2. Magnetic North is correct for December 2023 and moves westerly by about 0.22° each year.



DATA SOURCES

Main Map

Multispectral Space Imagery Spot 1 acquired
25 February 1990
© CNES - 1988 SPOT R
Processed by the Australian Centre for Remote Sensing (ACRES)

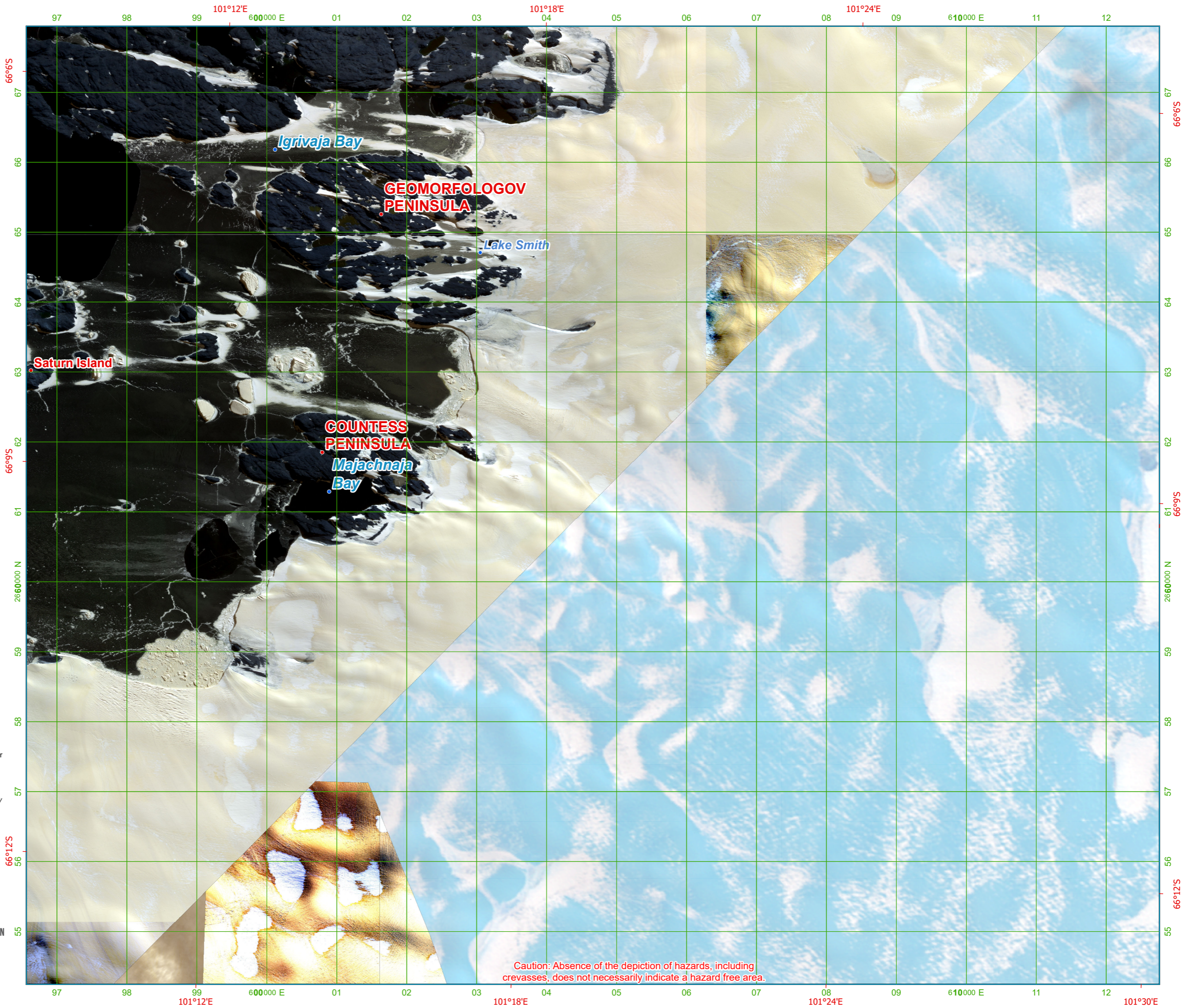
Maxar products QuickBird (QB) and WorldView (WV) ©
2006(QB), 2011(QB), 2018(WV), 2019(WV), 2023(WV)
Maxar Technologies

Approved place names are from the Australian Antarctic Gazetteer
<http://data.aad.gov.au/aadc/gaz/>
'Apostrophes' indicate informal names

Location Map

Coastline, landform and inland water data sourced from the
Australian Antarctic Division 1:1 Million Map Series (2023), https://data.aad.gov.au/metadata/1million_map_topo_series_2023

Produced by the Australian Antarctic Data Centre, Australian Antarctic Division
Map available at <https://data.aad.gov.au/aadc/mapcat>
Map Catalogue No. 16043
email: mapping@antarctica.gov.au
Published November 2023
© Commonwealth of Australia 2023



Caution: Absence of the depiction of hazards, including crevasses, does not necessarily indicate a hazard free area.