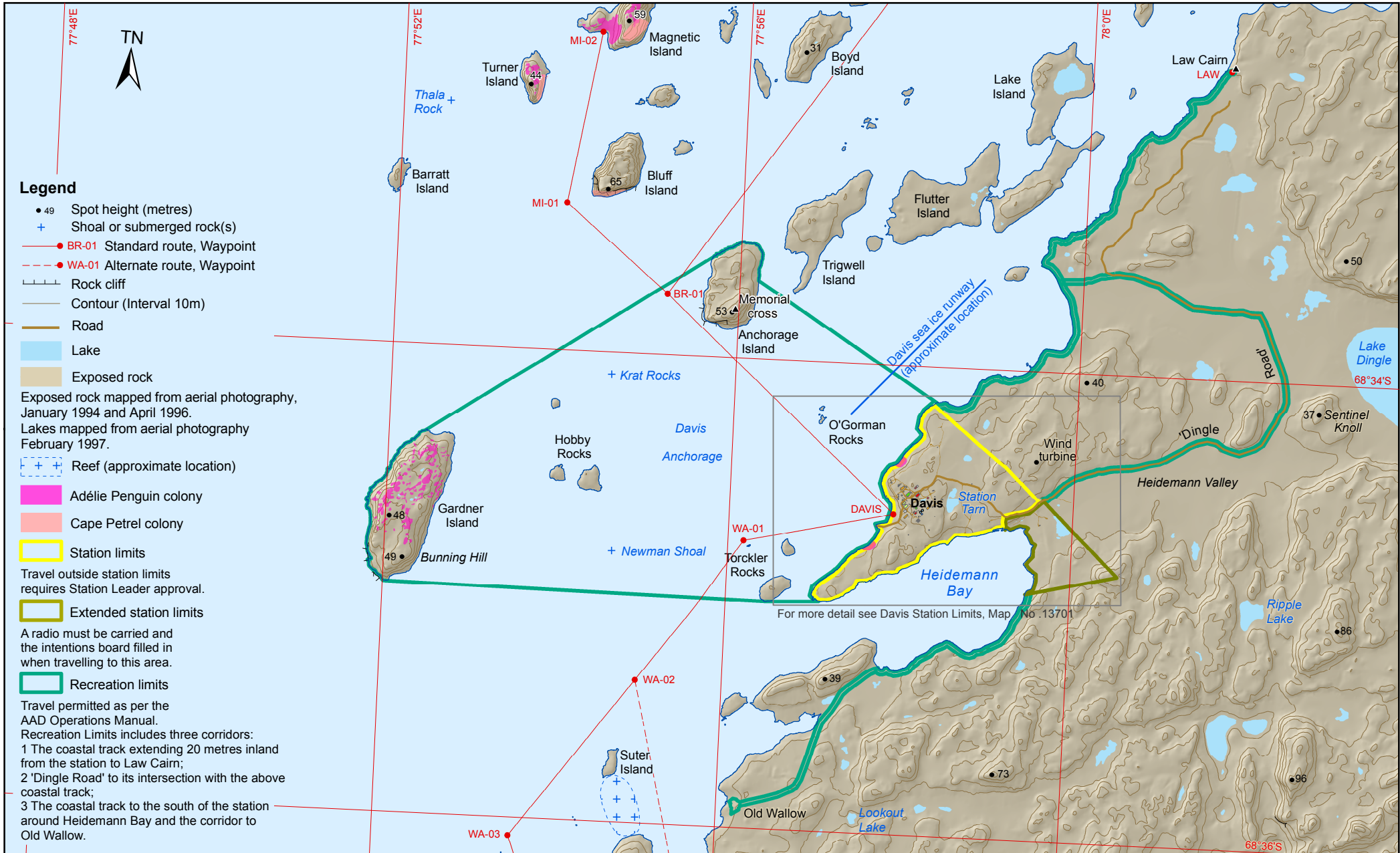


DAVIS

RECREATION LIMITS



Australian Government
Department of the Environment, Water, Heritage and the Arts
Australian Antarctic Division



Legend

- 49 Spot height (metres)
- + Shoal or submerged rock(s)
- BR-01 Standard route, Waypoint
- - -● WA-01 Alternate route, Waypoint
- ⎓ Rock cliff
- Contour (Interval 10m)
- Road
- Lake
- Exposed rock

Exposed rock mapped from aerial photography, January 1994 and April 1996.
Lakes mapped from aerial photography February 1997.

- ⎓ Reef (approximate location)
- Adélie Penguin colony
- Cape Petrel colony

- Station limits
- Travel outside station limits requires Station Leader approval.
- Extended station limits

A radio must be carried and the intentions board filled in when travelling to this area.

- Recreation limits

Travel permitted as per the AAD Operations Manual.
Recreation Limits includes three corridors:
1 The coastal track extending 20 metres inland from the station to Law Cairn;
2 'Dingle Road' to its intersection with the above coastal track;
3 The coastal track to the south of the station around Heidemann Bay and the corridor to Old Wallow.

