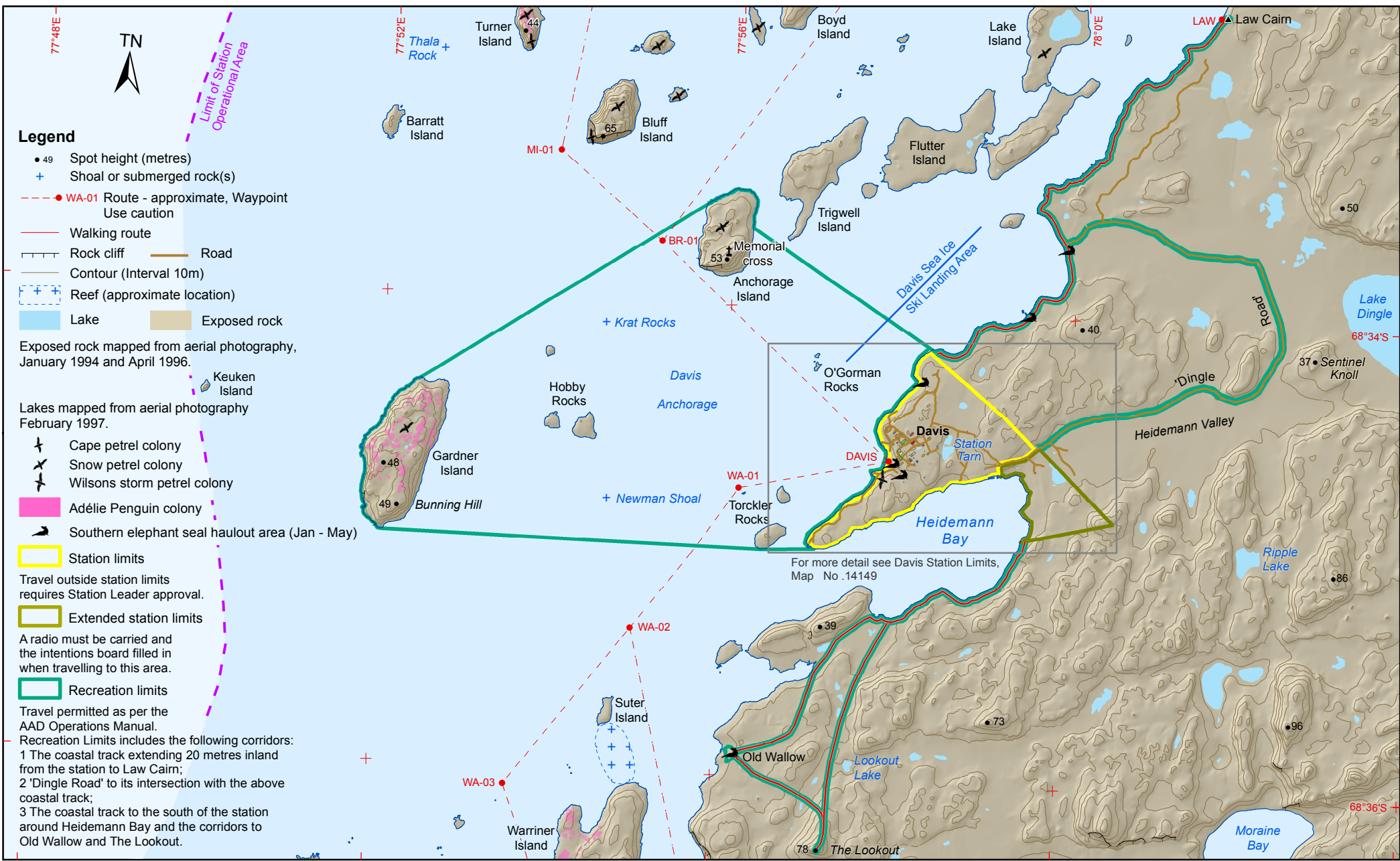


DAVIS

RECREATION LIMITS



- Legend**
- 49 Spot height (metres)
 - + Shoal or submerged rock(s)
 - - - WA-01 Route - approximate, Waypoint Use caution
 - Walking route
 - Rock cliff — Road
 - Contour (Interval 10m)
 - Reef (approximate location)
 - Lake — Exposed rock

Exposed rock mapped from aerial photography, January 1994 and April 1996.

Lakes mapped from aerial photography February 1997.

- ✈ Cape petrel colony
- ✈ Snow petrel colony
- ✈ Wilsons storm petrel colony
- Adélie Penguin colony
- Southern elephant seal haulout area (Jan - May)

- Station limits
- Extended station limits
- Recreation limits

Travel outside station limits requires Station Leader approval.

A radio must be carried and the intentions board filled in when travelling to this area.

Travel permitted as per the AAD Operations Manual.

Recreation Limits includes the following corridors:

- 1 The coastal track extending 20 metres inland from the station to Law Cairn;
- 2 'Dingle Road' to its intersection with the above coastal track;
- 3 The coastal track to the south of the station around Heidemann Bay and the corridors to Old Wallow and The Lookout.

