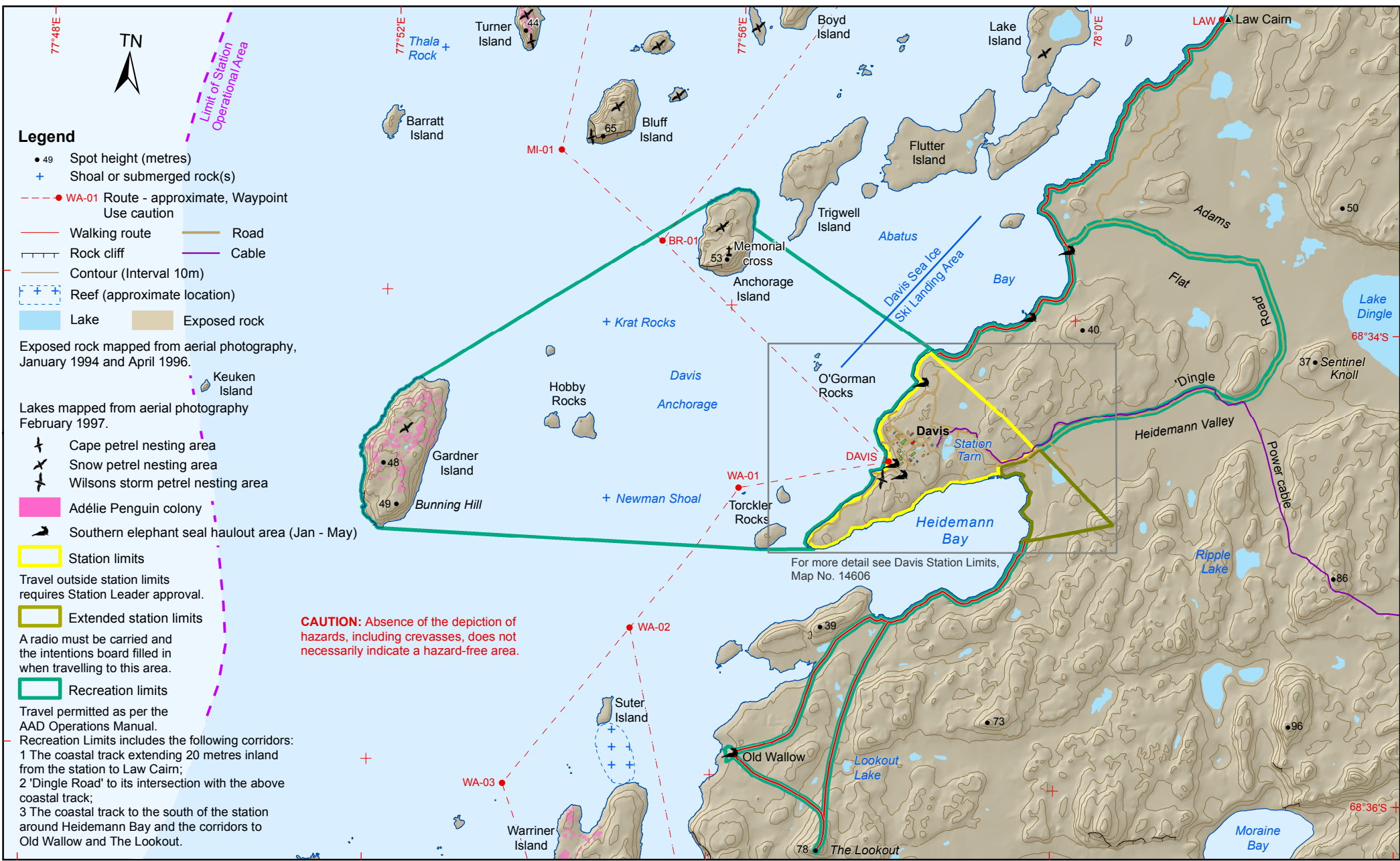


DAVIS

RECREATION LIMITS



- Legend**
- 49 Spot height (metres)
 - + Shoal or submerged rock(s)
 - - - WA-01 Route - approximate, Waypoint Use caution
 - Walking route
 - Road
 - Rock cliff
 - Cable
 - Contour (Interval 10m)
 - Reef (approximate location)
 - Lake
 - Exposed rock

Exposed rock mapped from aerial photography, January 1994 and April 1996.

Lakes mapped from aerial photography February 1997.

- ✈ Cape petrel nesting area
- ✈ Snow petrel nesting area
- ✈ Wilsons storm petrel nesting area
- Adélie Penguin colony
- ➔ Southern elephant seal haulout area (Jan - May)

- Station limits
- Travel outside station limits requires Station Leader approval.
- Extended station limits
- A radio must be carried and the intentions board filled in when travelling to this area.
- Recreation limits
- Travel permitted as per the AAD Operations Manual.
- Recreation Limits includes the following corridors:
 - 1 The coastal track extending 20 metres inland from the station to Law Cairn;
 - 2 'Dingle Road' to its intersection with the above coastal track;
 - 3 The coastal track to the south of the station around Heidemann Bay and the corridors to Old Wallow and The Lookout.

CAUTION: Absence of the depiction of hazards, including crevasses, does not necessarily indicate a hazard-free area.

For more detail see Davis Station Limits, Map No. 14606

