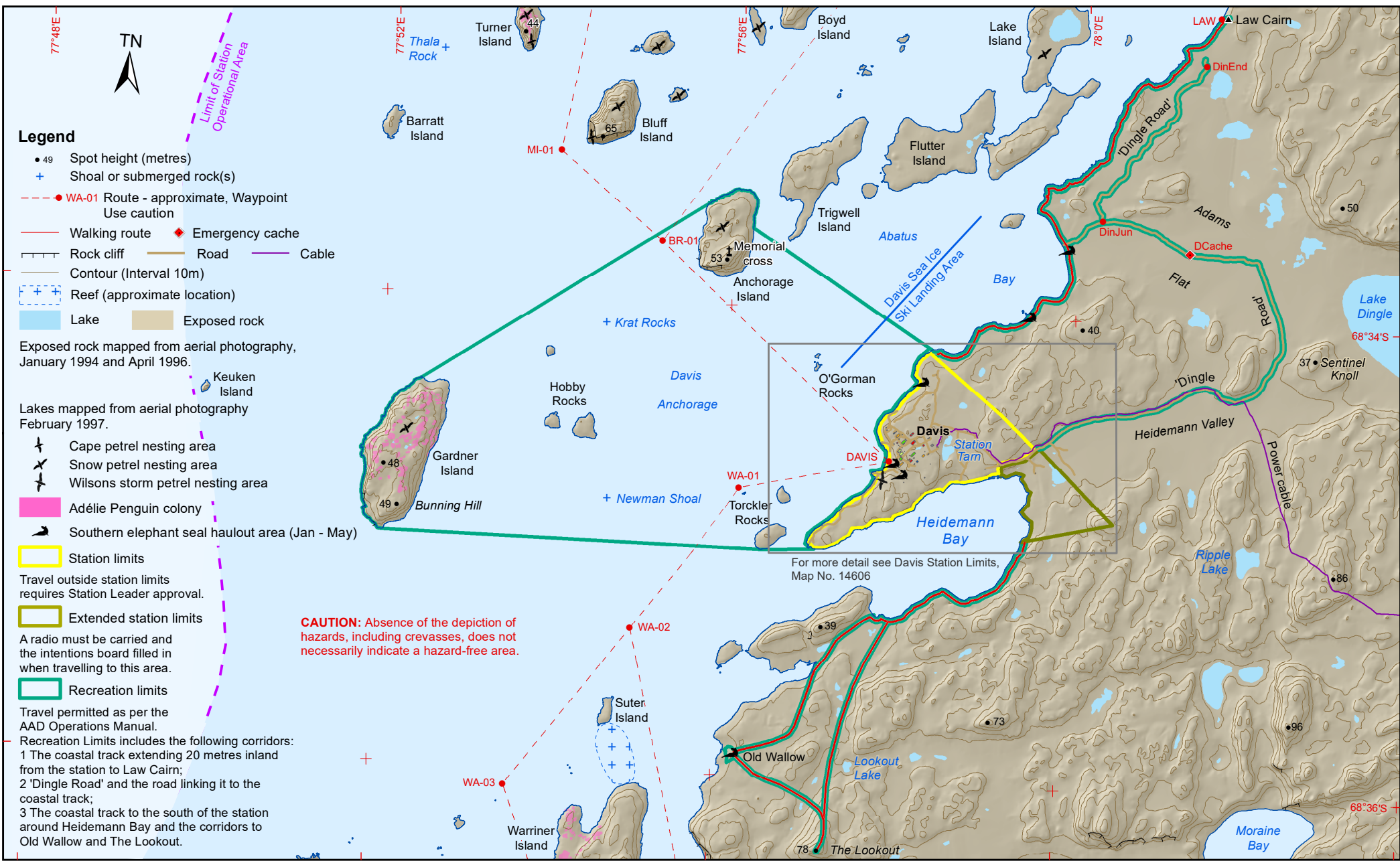


# DAVIS

## RECREATION LIMITS



- Legend**
- 49 Spot height (metres)
  - + Shoal or submerged rock(s)
  - - - • WA-01 Route - approximate, Waypoint  
Use caution
  - Walking route
  - ◆ Emergency cache
  - Rock cliff
  - Road
  - Cable
  - Contour (Interval 10m)
  - Reef (approximate location)
  - Lake
  - Exposed rock

Exposed rock mapped from aerial photography, January 1994 and April 1996.

Lakes mapped from aerial photography February 1997.

- ✈ Cape petrel nesting area
- ✈ Snow petrel nesting area
- ✈ Wilsons storm petrel nesting area
- Adélie Penguin colony
- ➔ Southern elephant seal haulout area (Jan - May)

**Station limits**  
Travel outside station limits requires Station Leader approval.

**Extended station limits**  
A radio must be carried and the intentions board filled in when travelling to this area.

**Recreation limits**  
Travel permitted as per the AAD Operations Manual.  
Recreation Limits includes the following corridors:  
1 The coastal track extending 20 metres inland from the station to Law Cairn;  
2 'Dingle Road' and the road linking it to the coastal track;  
3 The coastal track to the south of the station around Heidemann Bay and the corridors to Old Wallow and The Lookout.

**CAUTION:** Absence of the depiction of hazards, including crevasses, does not necessarily indicate a hazard-free area.

For more detail see Davis Station Limits, Map No. 14606

