

AUSTRALIAN ANTARCTIC TERRITORY

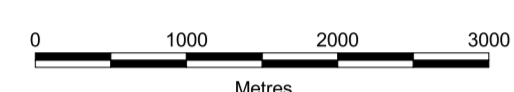


# FRAMNES MOUNTAINS

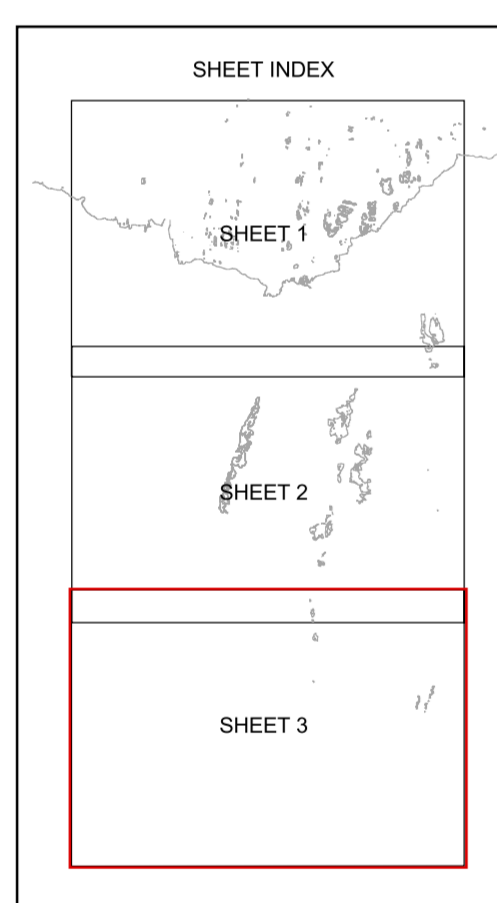
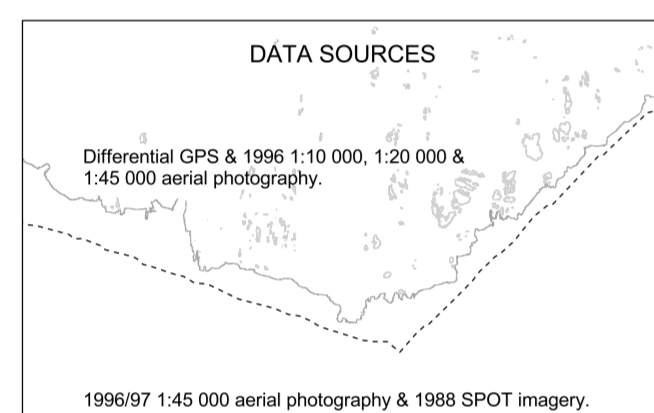
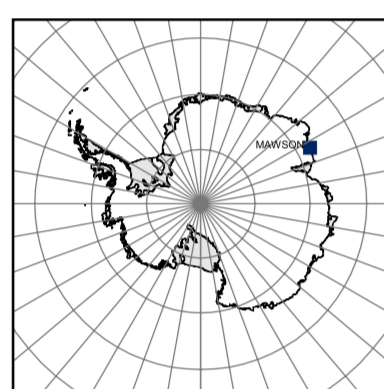
MAC ROBERTSON LAND  
ANTARCTICA

SHEET 3  
EDITION 3

SCALE 1:50 000

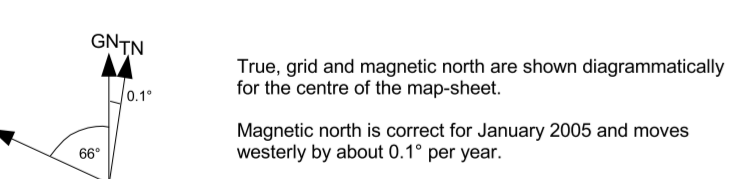


PROJECTION: Transverse Mercator  
GRID: Universal Transverse Mercator, Grid Zone 41  
HORIZONTAL DATUM: World Geodetic System 1984  
VERTICAL DATUM: Mean Sea Level



### LEGEND

- Refuge
- Spot height
- Waypoint
- Mast
- Aircraft wreck
- Mawson Station
- Contour (20m interval)
- Cliff
- Ice cliff
- Flow line
- Stream
- Route
- Dataset boundary
- Boundary of blue ice area
- Blue ice
- Lake
- Rock
- Scree
- Moraine
- Ice hillock
- Ice hillcock
- Adelie penguin colonies



True, grid and magnetic north are shown diagrammatically for the centre of the map-sheet.  
Magnetic north is correct for January 2005 and moves westerly by about 0.1° per year.

### HOW TO QUOTE A GRID REFERENCE FOR A PARTICULAR POINT

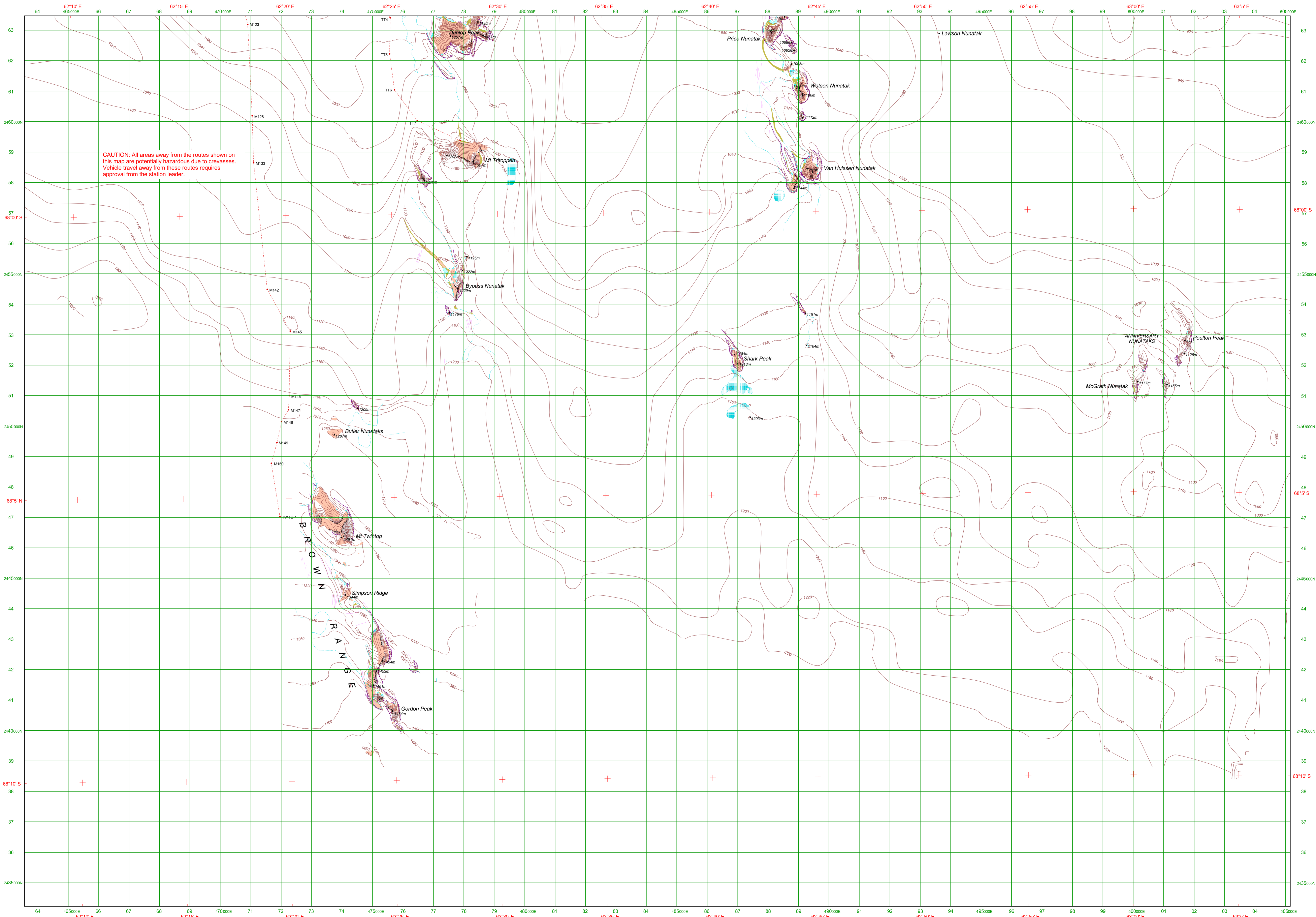
- Quote the Map: FRAMNES MOUNTAINS
- Locate the first vertical line to the left of the point and read the large figures in green: 01
- Estimate the fourth from the grid line to the point: 7
- Locate the first horizontal line below the point and read the large figures in green: 52
- Estimate the fourth from the grid line to the point: 4

SAMPLE POINT: Poulton Peak 017524

### LOCATIONS OF THE REFUGES

REFUGE	GRID REF	GEOGRAPHIC REF
MT HENDERSON HUT	41 024896	67°42' S 63°03' E
BUMBOOLEE HUT	41 022522	67°46' S 62°48' E
FANG PEAK HUT	41 019708	67°47' S 62°34' E
BECHERWISSE ISLAND REFUGES	41 019053	67°36' S 62°48' E

Published in October 2005 by the Australian Antarctic Data Centre  
Map Catalogue No. 13193



CAUTION: All areas away from the routes shown on this map are potentially hazardous due to crevasses. Vehicle travel away from these routes requires approval from the station leader.