

Framnes Mountains

Map 1 of 4

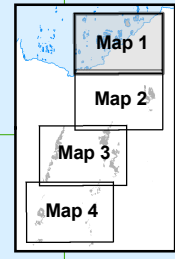
Edition 3

Horizontal Datum: WGS84
Projection: UTM Zone 41



Scale 1 : 50 000

Produced by the Australian Antarctic Data Centre
August 2009, Map Catalogue Number: 13657
© Commonwealth of Australia



True, Grid and Magnetic North are shown diagrammatically. Magnetic North is correct for 2009 and moves westerly by about 0.1° per year.



Australian Government
Department of the Environment,
Water, Heritage and the Arts
Australian Antarctic Division

CAUTION: All areas away from the routes shown on this map are potentially hazardous due to crevasses. Vehicle travel away from these routes requires approval from the station leader.

Legend

- Mast
- Refuge
- Spot height
- Waypoint
- Contour (20m interval)
- Contour (100m interval)
- Boundary of blue ice area
- Flow line
- Route
- Ice cliff
- Rock cliff
- Melt stream
- Snow petrel nest/colony
- Wilson's storm-petrel nest/colony
- Adélie penguin colony
- Lake
- Scree
- Moraine
- Blue ice
- Ice-free area
- Ice hillock
- Ice

