

# Framnes Mountains

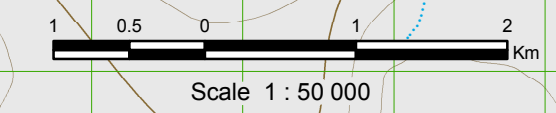
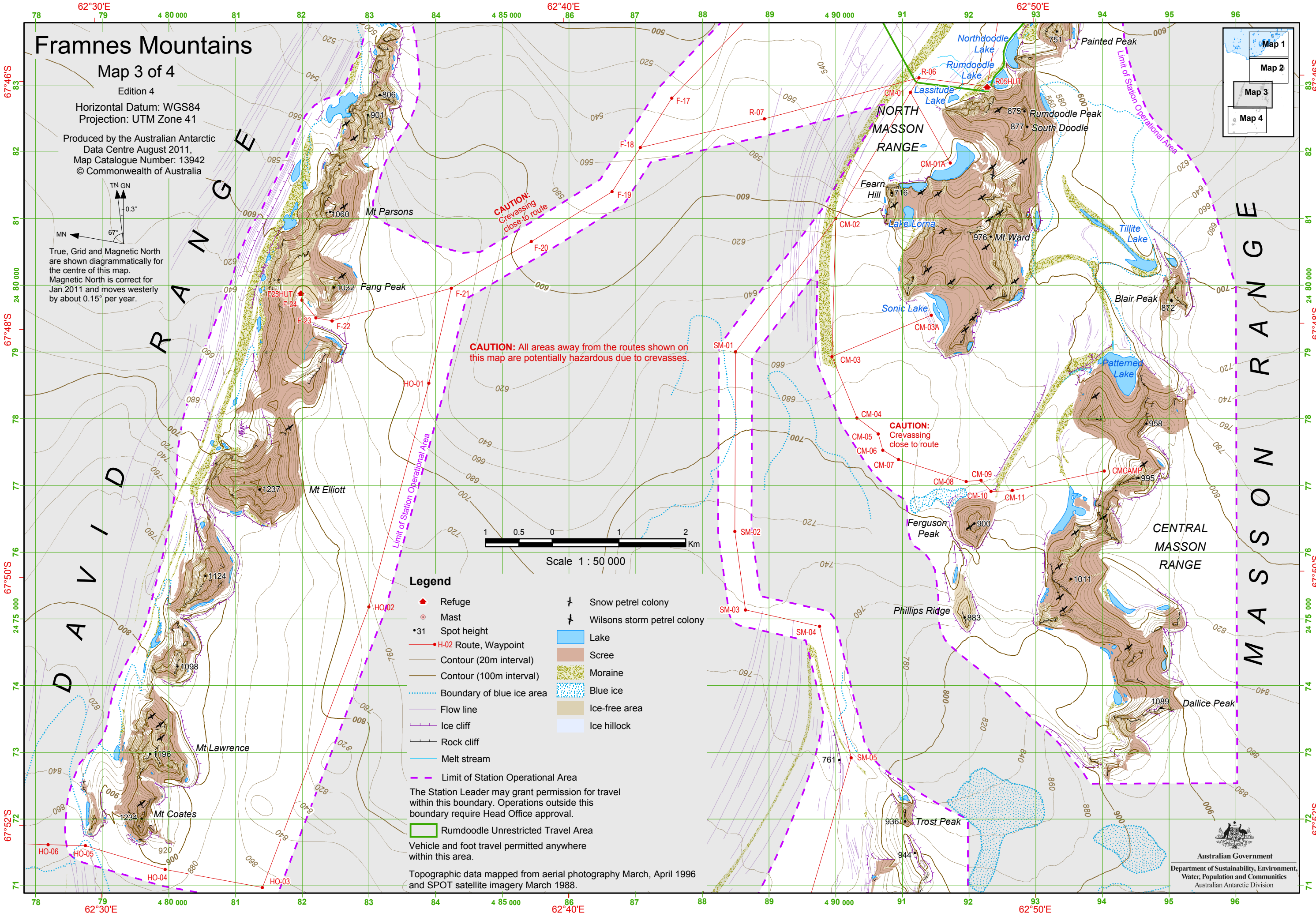
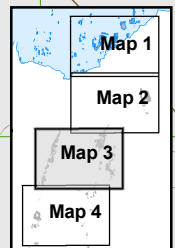
Map 3 of 4

Edition 4

Horizontal Datum: WGS84  
Projection: UTM Zone 41

Produced by the Australian Antarctic  
Data Centre August 2011,  
Map Catalogue Number: 13942  
© Commonwealth of Australia

TN GN  
0.3°  
MN  
67°  
True, Grid and Magnetic North  
are shown diagrammatically for  
the centre of this map.  
Magnetic North is correct for  
Jan 2011 and moves westerly  
by about 0.15° per year.



### Legend

- ◆ Refuge
- Mast
- 31 Spot height
- H-02 Route, Waypoint
- Contour (20m interval)
- Contour (100m interval)
- ⋯ Boundary of blue ice area
- Flow line
- Ice cliff
- Rock cliff
- Melt stream
- Limit of Station Operational Area
- ◆ Snow petrel colony
- ◆ Wilsons storm petrel colony
- Lake
- Scree
- Moraine
- Blue ice
- Ice-free area
- Ice hillock

The Station Leader may grant permission for travel within this boundary. Operations outside this boundary require Head Office approval.

**Rumdoodle Unrestricted Travel Area**  
Vehicle and foot travel permitted anywhere within this area.

Topographic data mapped from aerial photography March, April 1996 and SPOT satellite imagery March 1988.



**CAUTION:** Crevassing close to route

**CAUTION:** All areas away from the routes shown on this map are potentially hazardous due to crevasses.

**CAUTION:** Crevassing close to route