



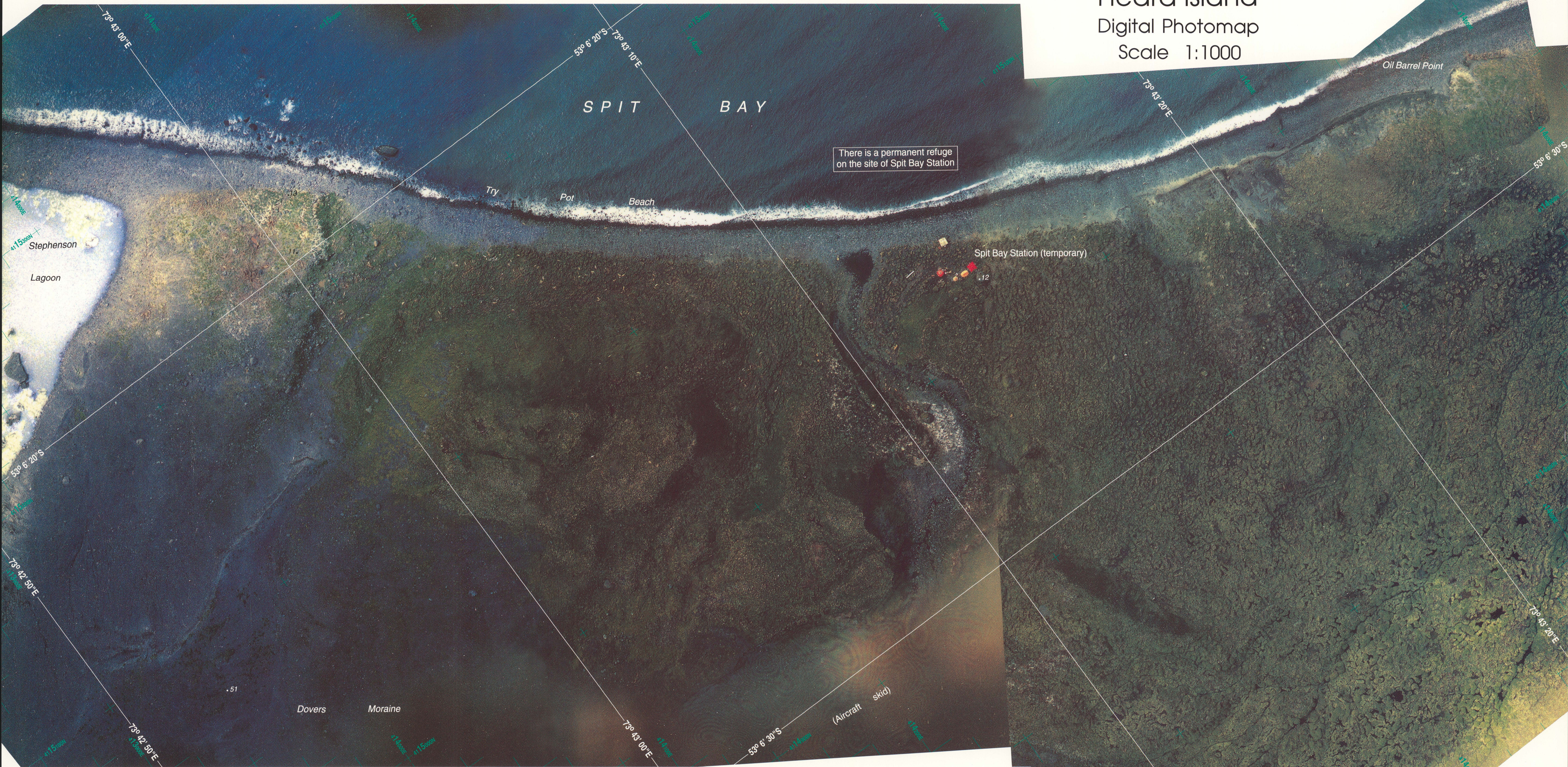
Australian Territory of Heard Island and McDonald Islands

Spit Bay

Heard Island

Digital Photomap

Scale 1:1000



LOCALITY MAP



SCALE



Projection: Transverse Mercator
 Grid: Universal Transverse Mercator, zone 43
 Horizontal datum: World Geodetic System 1984
 Vertical datum: Mean Sea Level
 Aircraft: Hughes 500C helicopter
 Camera/lens: Linhoff 69 (70mm format). 120mm lens
 Frames used: Run 1 - frames 84-85 (low level shots of Oil Barrel Point taken from 500 feet)
 Run 1 - frames 308-310 (high level shots taken from 2800 feet)
 Date of photography: 16 December 1986

Nomenclature: Names have been approved by the Antarctic Names Committee of Australia
 Map accuracy: Because of the photography used features at the edges of the map may be in error by +/- 10 metres
 Published in February 1993

by the Australian Surveying and Land Information Group
 for the Department of the Arts, Sport, and the Environment and Territories
 AUSTRALIAN ANTARCTIC DIVISION

IMPORTANT INFORMATION FOR VISITORS

Heard Island comprises part of the Territory of Heard Island and McDonald Islands, which is an Australian external territory. Persons intending to visit the island are advised that as a requirement of the Environment Protection and Management Ordinance 1987 a permit is required to enter the Territory or to undertake certain activities within the Territory. The Ordinance also provides for the development of a plan of management for the Territory and for the declaration of zones of special status.

Enquiries about permits to enter the Territory, permit conditions, the plan of management for the Territory or declared zones should be directed to:

Australian Antarctic Division
 Channel Highway
 Kingston
 Tasmania 7050
 AUSTRALIA
 Phone: (002) 32 3209
 Fax: (002) 32 3288

Magnetic north is correct for February 1993 and moves westerly by approximately 0.1° in one year

GRID CONVERGENCE 1.0°

GRID/MAGNETIC ANGLE 59.8°

Note: The north point is skewed to the map borders.