

HEARD ISLAND AND McDONALD ISLANDS

Heard Island is approximately 40 kilometres long by 20 kilometres wide and is dominated by Big Ben which is an active volcano. The island lies within the Antarctic convergence and is consequently glaciated. In the past most of the glaciers reached the sea but they are now in retreat, revealing large areas of moraine which are being colonised by vegetation. The island is home to large populations of elephant seals, king, macaroni, gentoo and rocktopper penguins, several species of burrowing petrels and other bird species.

Heard Island was named after Captain John J. Heard of the American merchant barque *Oriental* who discovered the island on 25 November 1853, though it is possible that it was first sighted by Peter Kemp, a British sealer, of the brig *Magnet* in 1833. The first reported landing on Heard Island was made in January 1855 by Captain E. Darwin Rogers of the whaling vessel *Corinthian*. Four American sealers worked the island in 1855 and the number of sealers peaked in 1858. Thereafter the industry declined until the last American sealer, the *Timothy*, was wrecked in 1880. The population of fur seals on the island is now rapidly recovering.

In October 1926 a whaling and sealing licence was granted by the British Colonial Office to a South African firm, the Kerguelen Sealing and Whaling Company. In January 1929 one of the company's whalers, the *Kildalkey*, under the command of Captain H.O. Hansen, visited Heard Island. A hut known as the Admiralty Hut was erected and the British flag was raised. A navigation beacon was set up at Atlas Cove. On 26 November 1929 the auxiliary steamer *Discovery* anchored in Corinthian Bay with Sir Douglas Mawson and the British Australian New Zealand Antarctic Research Expedition (BANZARE) on board. The expedition landed an eight man scientific party in Atlas Cove. They raised the Union Jack and occupied the Admiralty Hut until 3 December 1929.

The first ANARE Heard Island expedition arrived on 12 December 1947. On 26 December the Australian flag was raised and the territory of Heard Island and McDonald Islands formally claimed for Australia by Group Captain Stuart Campbell, the expedition leader. The ANARE station was established at Atlas Cove and manned by wintering parties for meteorological and scientific research until 1954. Sovereignty was transferred from the United Kingdom to Australia on 19 December 1950 and the Heard Island and McDonald Islands Act which provides for the government of the territory was enacted in 1963. The station closed on 8 March 1955 following the establishment of Mawson Station in Antarctica. There have been irregular visits by ANARE vessels since then. In March 1989 a party from the United States Coast and Geodetic Survey established a PACESOS satellite camera station which operated until April 1970. In 1992 an ANARE overwintering expedition will occupy a station at Spit Bay to carry out biological research and will be the first overwintering population at this end of the island since the 1870s.

A 200 nautical mile Australian fishing zone around the Territory of Heard Island and McDonald Islands came into effect on 1 November 1979, and on 4 January 1982 a Maritime Delimitation Agreement was signed by Australia and France for the Kerguelen Plateau.

SCALE 1 : 50 000
2 cm to 1 kilometre

PROJECTION: Transverse Mercator
GRID: Universal Transverse Mercator, grid zone 43
HORIZONTAL DATUM: World Geodetic System 1984
MAGNETIC VARIATION: 58° west in 1992
IMAGE: Multispectral Splice Imagery SPOT1 acquired 9 September 1988 and SPOT2 acquired 31 March 1991
GRS co-ordinates: K245 J458

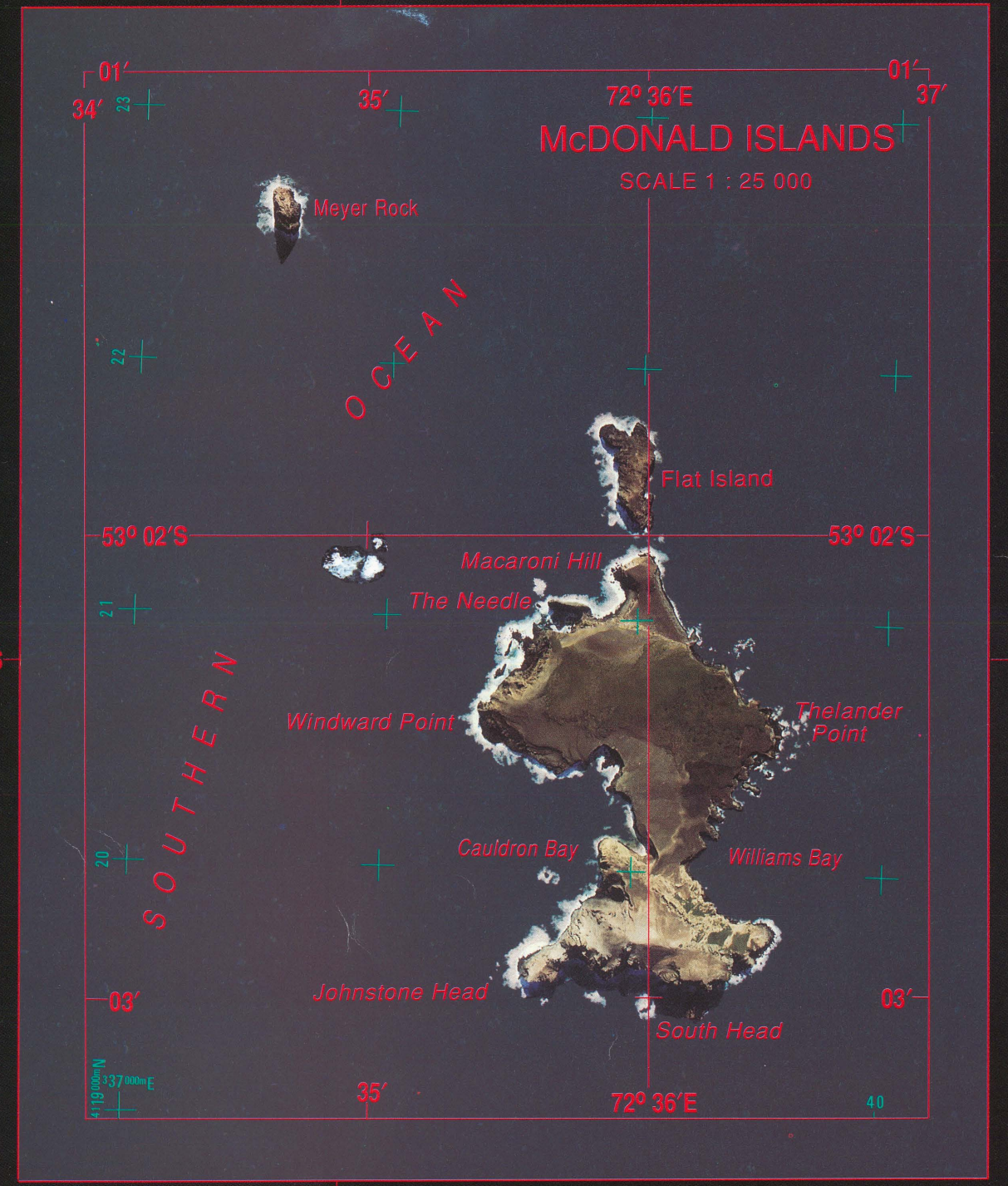
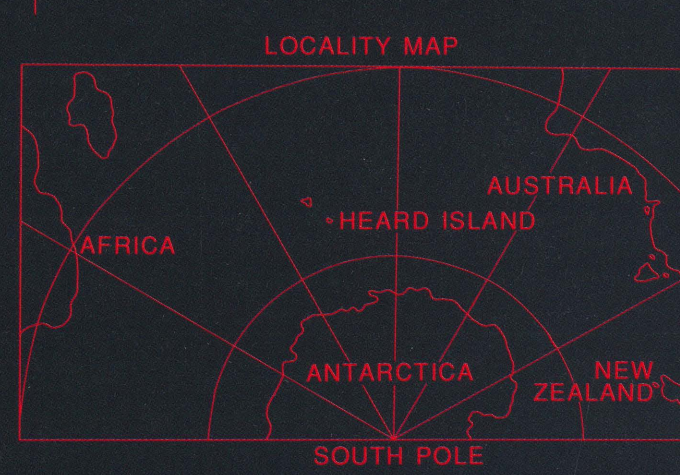
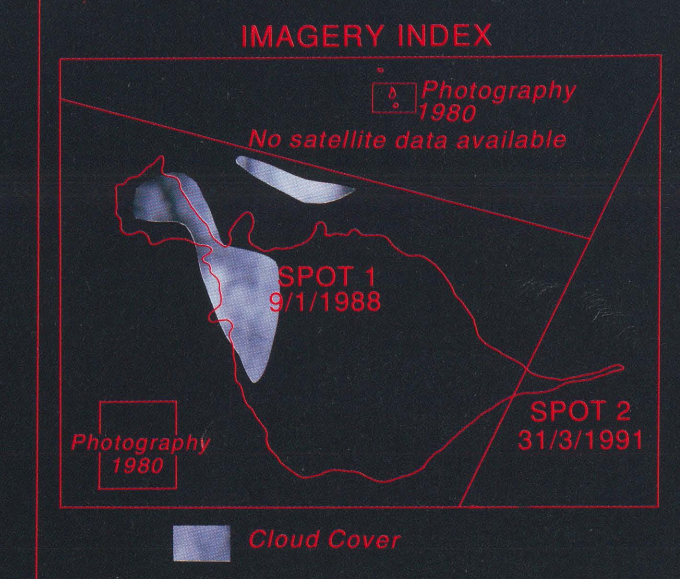
NOMENCLATURE: Names have been approved by the Antarctic Names Committee of Australia

© CNES - 1988 SPOT R
Processed by Australian Centre for Remote Sensing (ACRES)

Published in December 1991 by the Australian Surveying and Land Information Group for Department of the Arts, Sport, the Environment, Tourism and Territories
ANTARCTIC DIVISION

© Commonwealth of Australia
GIU 91.045

For further information write to:
AUSLIG, PO Box 2, Belconnen
ACT 2616
Telephone: (06)201 4201
Fax: (06)201 4386



AUSTRALIAN EXTERNAL TERRITORY
OF
**Heard Island
and
McDonald Islands**

SATELLITE IMAGE MAP
1 : 50 000 SCALE