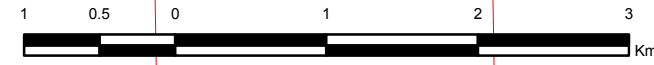


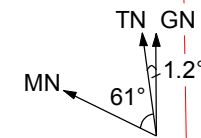
73°38'E 73°40'E 73°42'E 73°44'E 73°46'E 73°48'E 73°50'E 73°52'E

Heard Island GeoEye-1 satellite imagery - 2 February 2012 Map 3 of 5

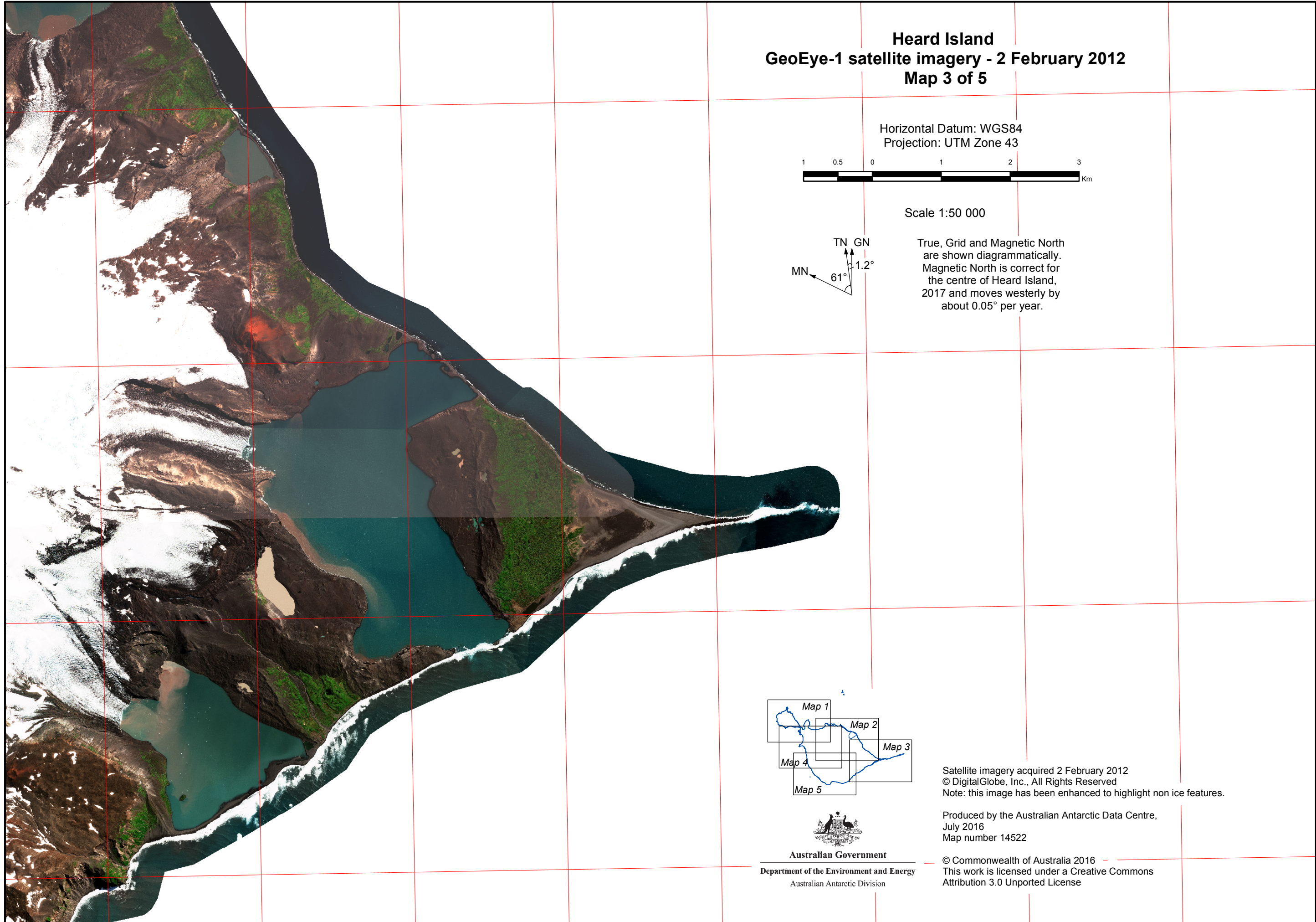
Horizontal Datum: WGS84
Projection: UTM Zone 43



Scale 1:50 000

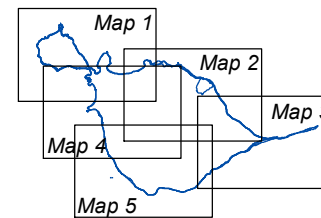


True, Grid and Magnetic North are shown diagrammatically. Magnetic North is correct for the centre of Heard Island, 2017 and moves westerly by about 0.05° per year.



53°4'S
53°6'S
53°8'S
53°10'S

53°4'S
53°6'S
53°8'S
53°10'S



Satellite imagery acquired 2 February 2012
© DigitalGlobe, Inc., All Rights Reserved
Note: this image has been enhanced to highlight non ice features.

Produced by the Australian Antarctic Data Centre,
July 2016
Map number 14522



Australian Government
Department of the Environment and Energy
Australian Antarctic Division

© Commonwealth of Australia 2016
This work is licensed under a Creative Commons Attribution 3.0 Unported License

73°38'E 73°40'E 73°42'E 73°44'E 73°46'E 73°48'E 73°50'E 73°52'E