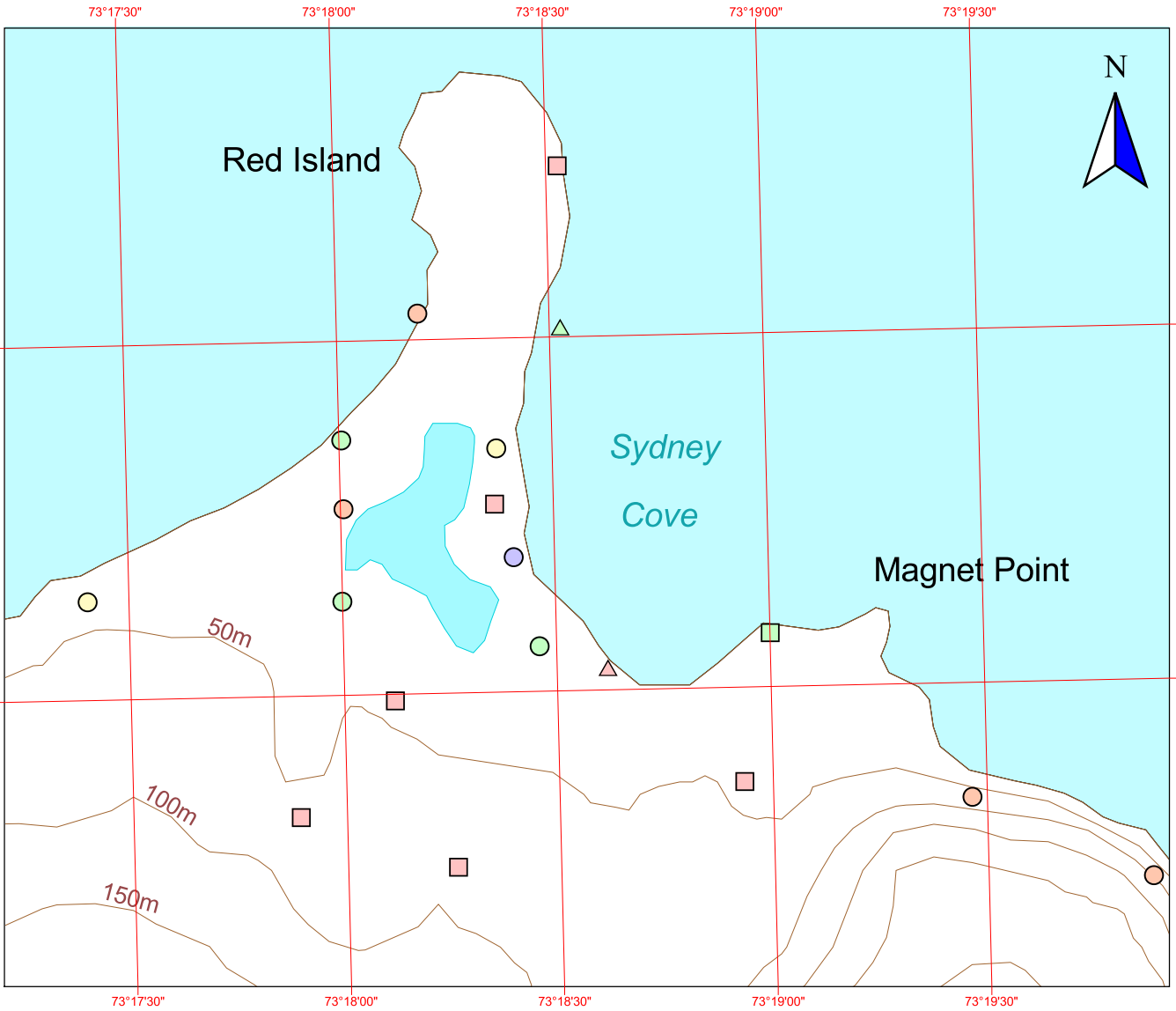


Working map of Red Island, Heard Island

Produced by Australian Antarctic Data Centre,
 Australian Antarctic Division,
 Department of the Environment and Heritage,
 December 1999
 © Commonwealth of Australia



200 0 200 400 600 800 1000 Metres



1:20 000

- | | | | |
|-------------------|---------------------|------------------------|---------------------|
| Penguins | | Flying birds | |
| Gentoo Penguins | King Penguins | Black-browed Albatross | Cormorants |
| Macaroni Penguins | Rockhopper Penguins | Southern Giant Petrel | Wandering Albatross |
| Unknown species | | | |
| Seals | | | |
| Elephant Seals | Fur Seals | | |
| Leopard Seal | | | |

Note: The location of wildlife is approximate.
 Please email comments to gis@antdiv.gov.au
 Universal transverse mercator projection, zone 43
 Horizontal datum: WGS84
 Vertical datum: Mean seal level