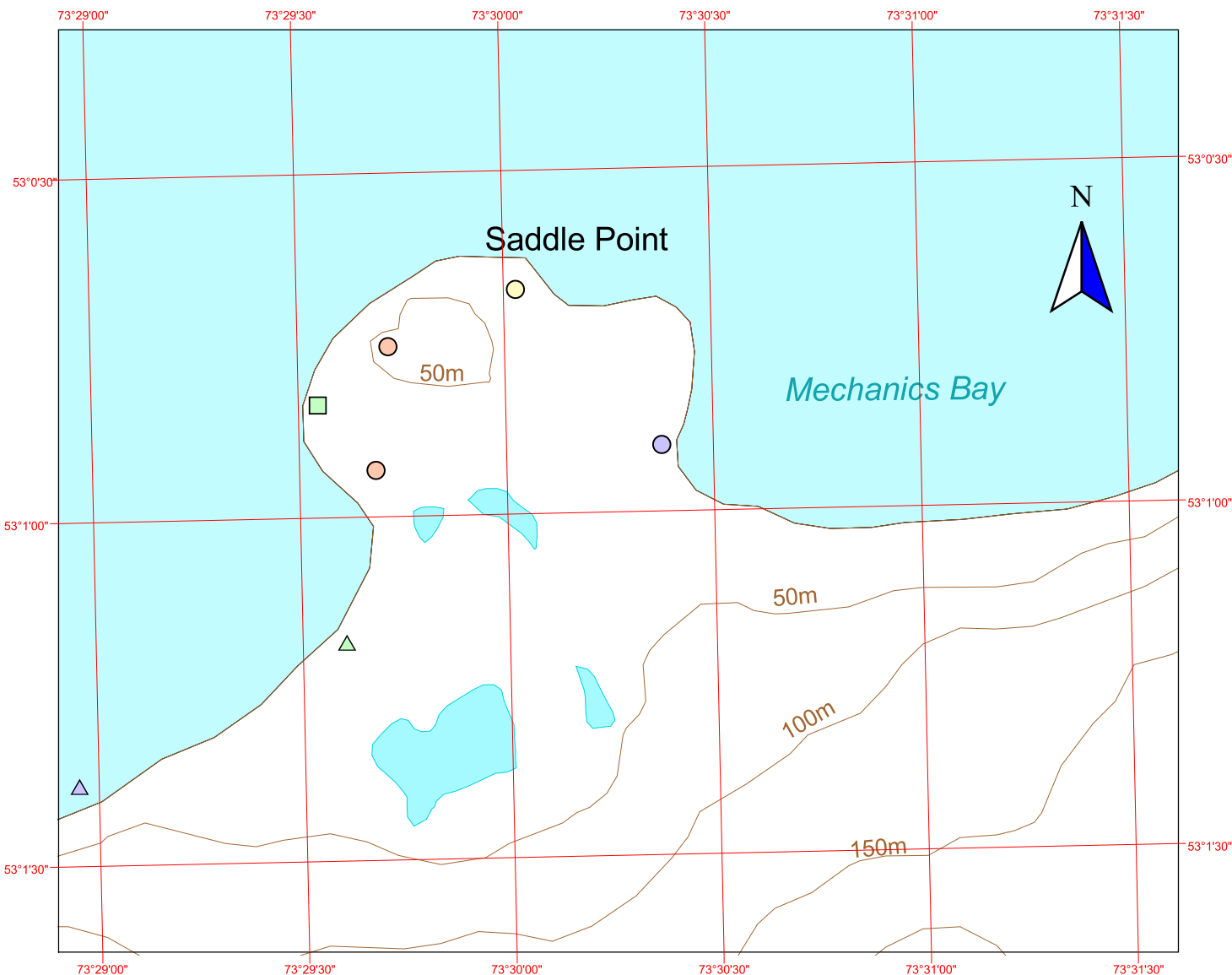


Working map of Saddle Point, Heard Island

Produced by Australian Antarctic Data Centre,
 Australian Antarctic Division,
 Department of the Environment and Heritage,
 December 1999
 © Commonwealth of Australia



200 0 200 400 600 800 1000 Metres



1:20 000

- | | | | | | |
|--------------|----------------|-----------------|---------------------|---------------------|------------------------|
| Seals | | Penguins | | Flying birds | |
| △ | Elephant Seals | ● | Gentoo Penguins | ■ | Black-browed Albatross |
| △ | Fur Seals | ● | King Penguins | ■ | Cormorants |
| △ | Leopard Seal | ● | Macaroni Penguins | ■ | Southern Giant Petrel |
| | | ● | Rockhopper Penguins | ■ | Wandering Albatross |
| | | ● | Unknown species | | |

Note: The location of wildlife is approximate.
 Please email comments to gis@antdiv.gov.au
 Universal transverse mercator projection, zone 43
 Horizontal datum: WGS84
 Vertical datum: Mean seal level