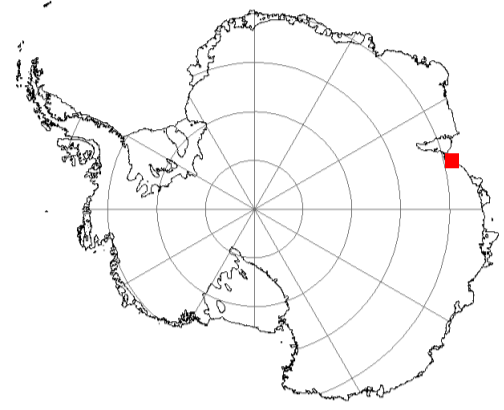


AUSTRALIAN ANTARCTIC TERRITORY

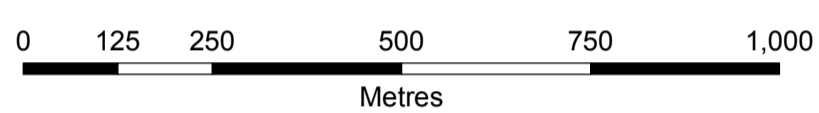


BROKNES PENINSULA LARSEMANN HILLS PRINCESS ELIZABETH LAND ANTARCTICA ENVIRONMENTAL MANAGEMENT MAP

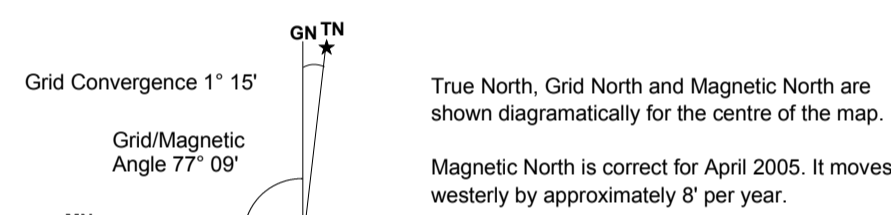
EDITION 1
Published in April 2005



SCALE 1:10 000



PROJECTION: Universal Transverse Mercator Zone 43
HORIZONTAL DATUM: WGS84
VERTICAL DATUM: Mean Sea Level
CONTOUR INTERVAL: 10 metres
NOMENCLATURE: Names have been approved by the Australian Antarctic Names and Medals Committee
Map number - 13135



LEGEND

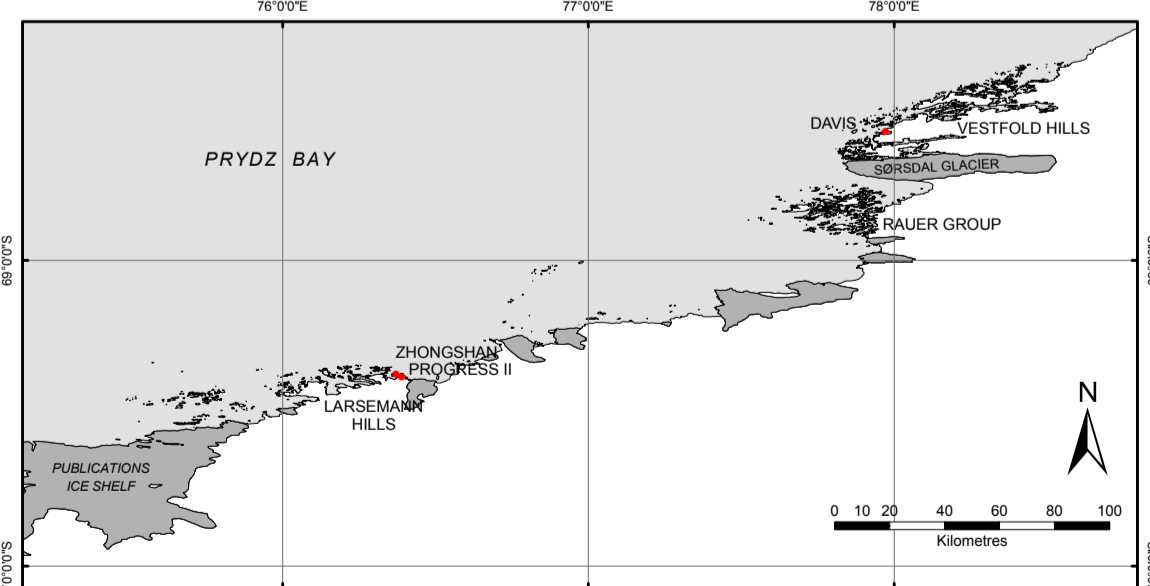
- | | |
|--|--|
| <ul style="list-style-type: none"> ⊕ Snow penguin colony † Grave ⚓ Anchorage ■ Building ⊠ Tank ⊕ Rikometer ⊕ Radio mast ⊕ Helicopter aerodrome — Aircraft landing strip — Route (unmarked) Proposed Antarctic Specially Managed Area (ASMA) Facilities zone Magnetic quiet zone Lake Saline lake (>3 grams/litre salt) Catchment area Area of relatively rich vegetation | <ul style="list-style-type: none"> • Elevation on ice • Elevation on rock — Ice coastline — Rock coastline — Glacier front — Glacier grounding line — Crevasse — Rock cliff — Index contour on ice — Index contour on ice free area — Intermediate contour on ice — Intermediate contour on ice free area — Depression contour on ice — Depression contour on ice free area — Reef — Moraine — Scree — Ice free area |
|--|--|

HOW TO QUOTE A GRID REFERENCE FOR A PARTICULAR POINT

Grid lines are at 1000m intervals
Eg. Law Base

1. Quote this map Broknes Peninsula Edition 1 Map no 13135
 2. Locate the VERTICAL grid line to the left of the point 554 000
 3. Estimate the distance (to within 25m) from the grid line to the point 250
 4. Add points 2 and 3 together and leave off the first two digits 4250
 5. Locate the HORIZONTAL grid line below the point 2 301 000
 6. Estimate the distance (to within 25m) from the grid line to the point 625
 7. Add points 5 and 6 together and leave off the first three digits 1625
- The grid reference for LAW BASE is: ... Broknes Peninsula Edition 1 Map no 13135 42501625

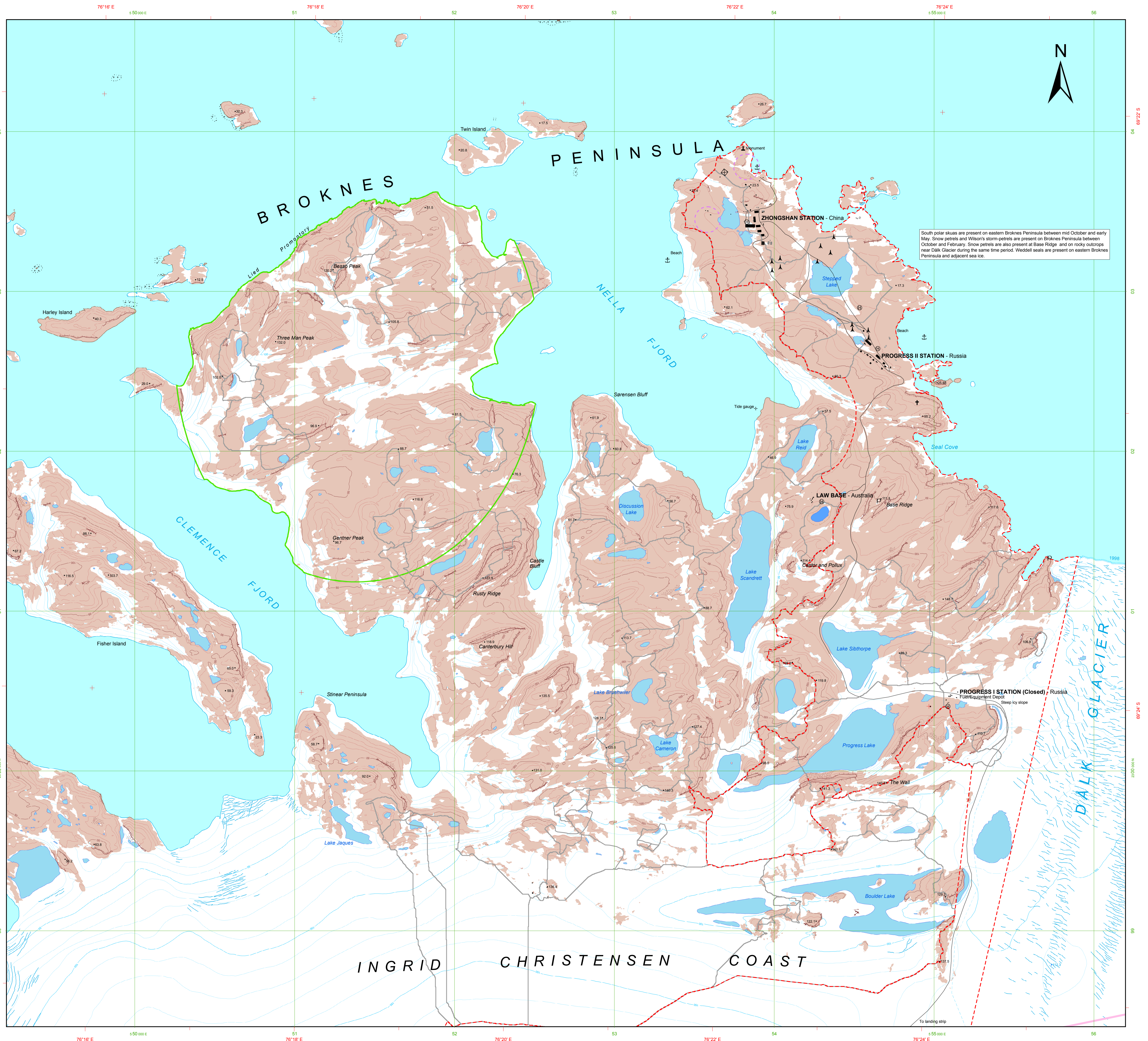
LOCATION DIAGRAM



SOURCE OF GEOGRAPHIC INFORMATION

Radio masts, rikometer and helicopter aerodromes - Ground surveys.
Proposed ASMA boundary, zones, anchorages, cairn, grave and monument - Draft Antarctic Specially Managed Area Management Plan for the Larsemann Hills, East Antarctica.
Snow penguin colonies and vegetation areas - Australian Antarctic Program scientists.
Dalk Glacier grounding line - Landsat 7 satellite imagery, captured in January 2000.
Otherwise the data sourced from aerial photography captured in February 1998.

For further information contact:
Australian Antarctic Division
Channel Highway
Kingston
Tasmania 7050
Telephone: (03) 6332 3200
Facsimile: (03) 6332 3288
Internet: <http://www.aad.gov.au>
Email: mapping@aad.gov.au
© Commonwealth of Australia



South polar skuas are present on eastern Broknes Peninsula between mid October and early May. Snow penguins and Wilson's storm-petrels are present on Broknes Peninsula between October and February. Snow penguins are also present at Base Ridge and on rocky outcrops near Dalk Glacier during the same time period. Weddell seals are present on eastern Broknes Peninsula and adjacent sea ice.