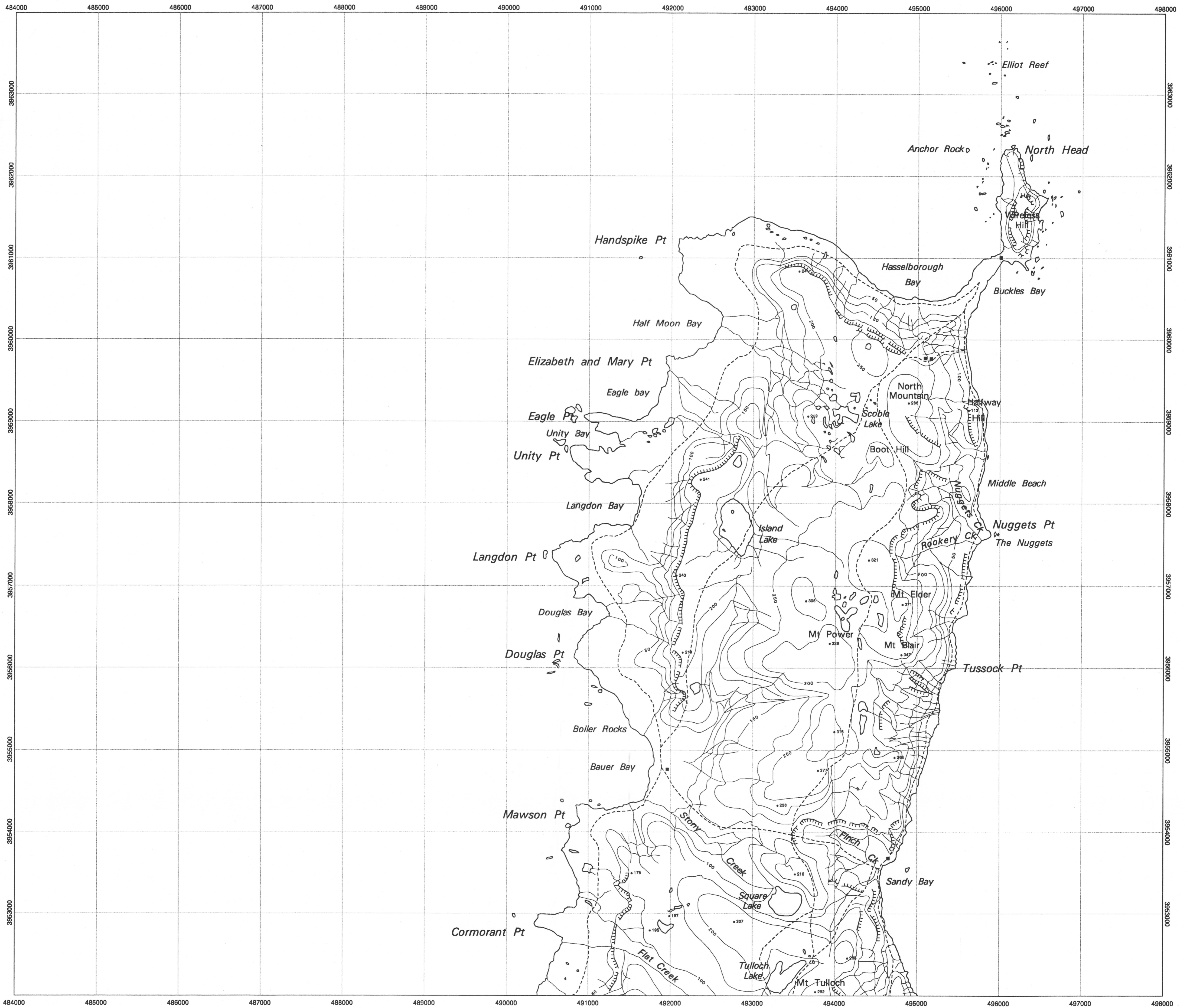


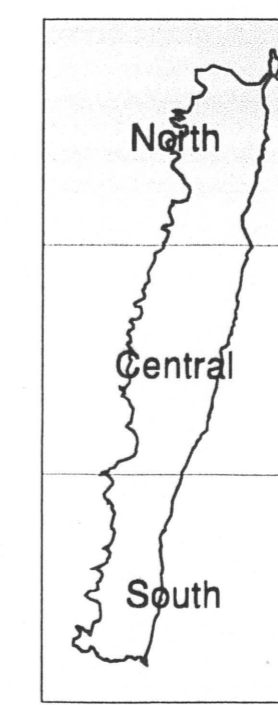
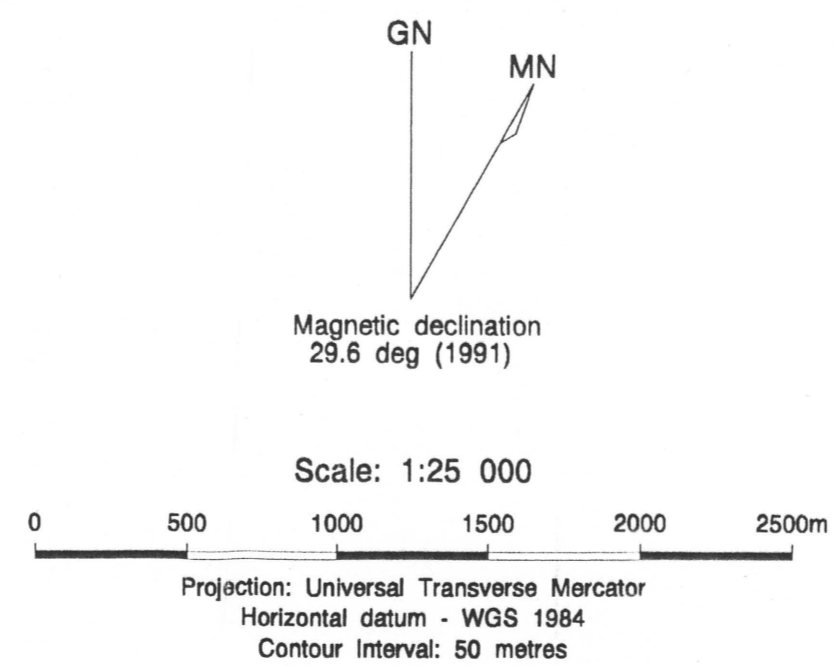
MACQUARIE ISLAND - NORTH



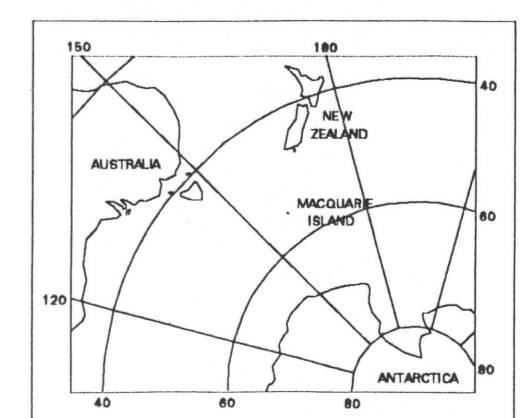
Base Map Information

Original base map detail from the Division of National Mapping Macquarie Island 1:50,000 topographic map (1971).

Base map information has been adjusted to conform to the Spot multispectral mosaic produced by the Australian Centre for Remote Sensing (ACRES) 1994. Warp control points were located mainly along the coast and on lake boundaries.



Produced by:
 Data Management Group,
 Mineral Resources Tasmania,
 PO Box 56, Rosny Park 7018
 Crown Copyright Reserved



Location Diagram