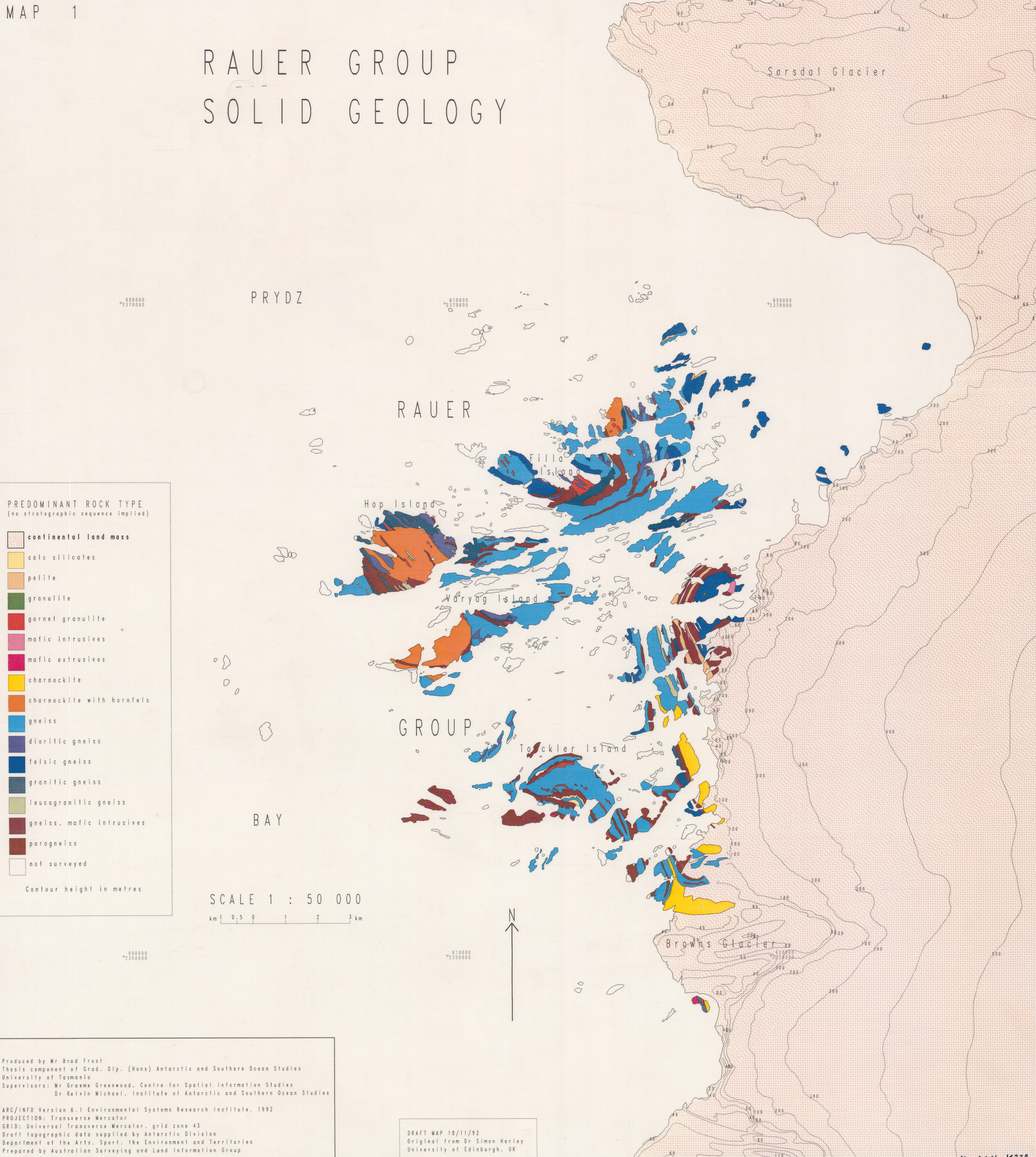


RAUER GROUP SOLID GEOLOGY

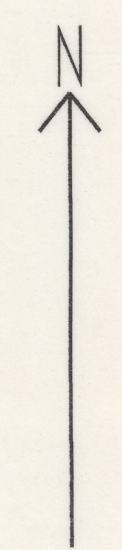


PREDOMINANT ROCK TYPE
(no stratigraphic sequence implied)

- continental land mass
- calc silicates
- pelite
- granulite
- garnet granulite
- mafic intrusives
- mafic extrusives
- charnockite
- charnockite with hornfels
- gneiss
- dioritic gneiss
- felsic gneiss
- granitic gneiss
- leucogranitic gneiss
- gneiss. mafic intrusives
- paragneiss
- not surveyed

Contour height in metres

SCALE 1 : 50 000
 km 1 0.5 0 1 2 3 km



Produced by Mr Brad Frost
 Thesis component of Grad. Dip. (Hons) Antarctic and Southern Ocean Studies
 University of Tasmania
 Supervisors: Mr Graeme Greenwood, Centre for Spatial Information Studies
 Dr Kelvin Michael, Institute of Antarctic and Southern Ocean Studies

ARC/INFO Version 6.1 Environmental Systems Research Institute, 1992
 PROJECTION: Transverse Mercator
 GRID: Universal Transverse Mercator, grid zone 43
 Draft topographic data supplied by Antarctic Division
 Department of the Arts, Sport, the Environment and Territories
 Prepared by Australian Surveying and Land Information Group

DRAFT MAP 18/11/92
 Original from Dr Simon Harley
 University of Edinburgh, UK