

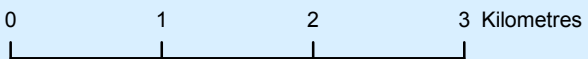
77°50'E

78°0'E

RAUER GROUP

PROPOSED AERIAL PHOTOGRAPHY 2009-10

MAP 1



Horizontal Datum: WGS84
Projection: UTM Zone 43



68°44'S

68°46'S

68°48'S

68°50'S

68°52'S

68°54'S

68°44'S

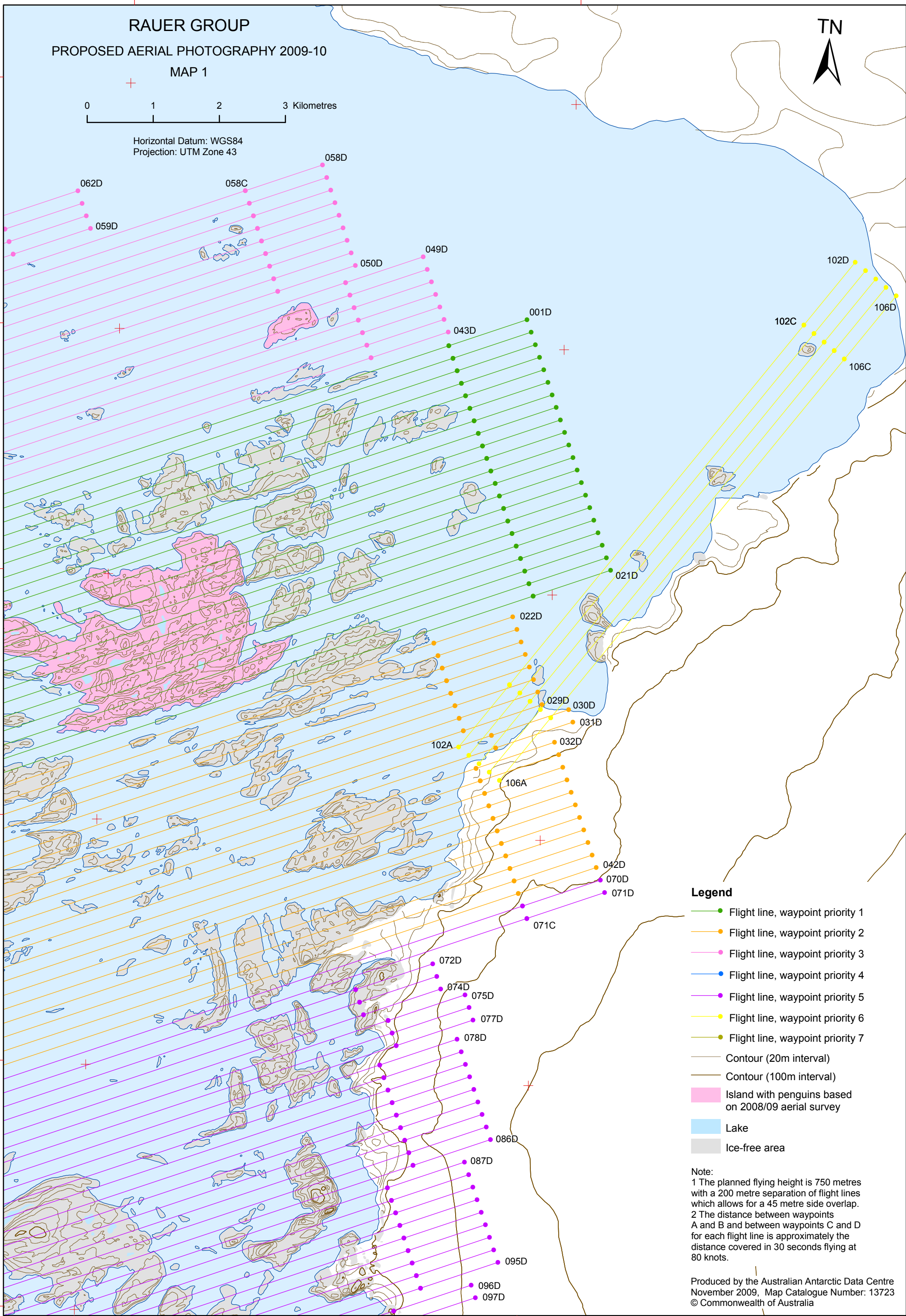
68°46'S

68°48'S

68°50'S

68°52'S

68°54'S



Legend

- Flight line, waypoint priority 1
- Flight line, waypoint priority 2
- Flight line, waypoint priority 3
- Flight line, waypoint priority 4
- Flight line, waypoint priority 5
- Flight line, waypoint priority 6
- Flight line, waypoint priority 7
- Contour (20m interval)
- Contour (100m interval)
- Island with penguins based on 2008/09 aerial survey
- Lake
- Ice-free area

Note:
1 The planned flying height is 750 metres with a 200 metre separation of flight lines which allows for a 45 metre side overlap.
2 The distance between waypoints A and B and between waypoints C and D for each flight line is approximately the distance covered in 30 seconds flying at 80 knots.

Produced by the Australian Antarctic Data Centre
November 2009, Map Catalogue Number: 13723
© Commonwealth of Australia

77°50'E

78°0'E