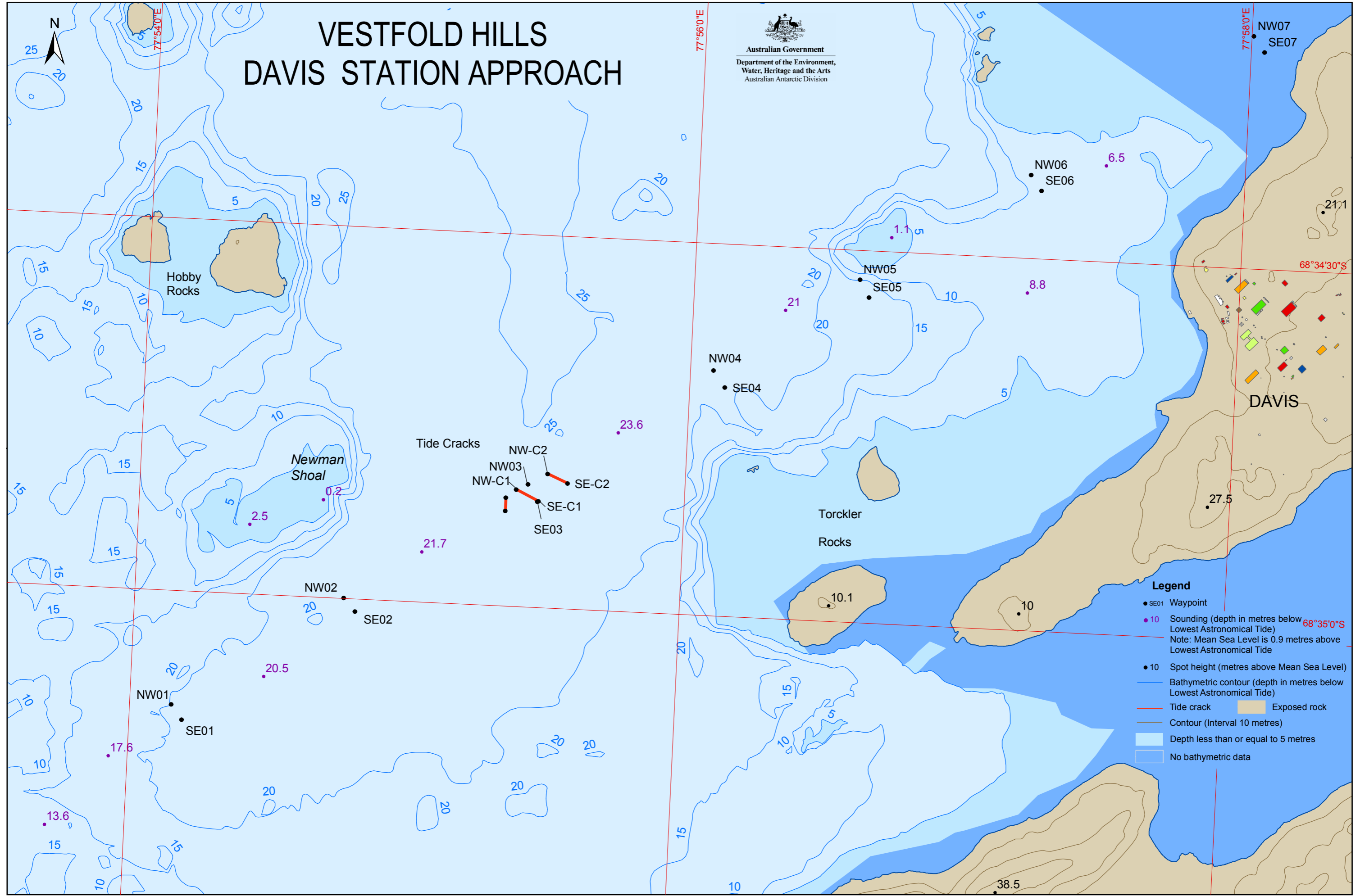


# VESTFOLD HILLS DAVIS STATION APPROACH

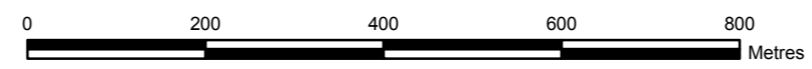
Australian Government  
Department of the Environment,  
Water, Heritage and the Arts  
Australian Antarctic Division



- Legend**
- SE01 Waypoint
  - 10 Sounding (depth in metres below Lowest Astronomical Tide)  
Note: Mean Sea Level is 0.9 metres above Lowest Astronomical Tide
  - 10 Spot height (metres above Mean Sea Level)
  - Bathymetric contour (depth in metres below Lowest Astronomical Tide)
  - Tide crack
  - Contour (Interval 10 metres)
  - Depth less than or equal to 5 metres
  - No bathymetric data
  - Exposed rock

Horizontal Datum: WGS84  
Projection: UTM Zone 43

Scale 1: 8 500



Produced by the Australian Antarctic Data Centre, Oct 2008  
Australian Antarctic Division © Commonwealth of Australia  
Map Catalogue No. 13562