

Vestfold Hills

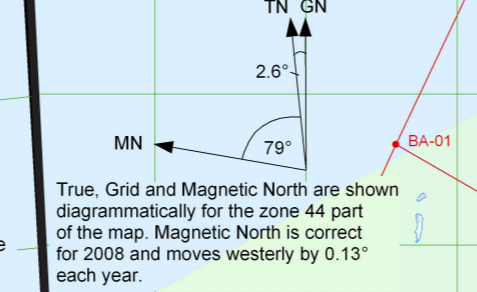
Map 2 of 5

Edition 5
Horizontal Datum: WGS84
Projection: UTM Zones 43 and 44



Scale 1 : 50 000

Produced by the Australian Antarctic Data Centre
July 2008, Map Catalogue Number: 13483



True, Grid and Magnetic North are shown diagrammatically for the zone 44 part of the map. Magnetic North is correct for 2008 and moves westerly by 0.13° each year.

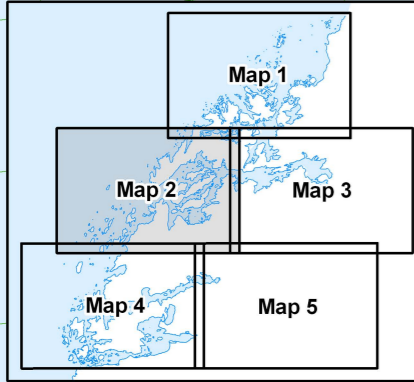
Legend

- 79 Spot height
- BA02 Waypoint
- ▲ Monument
- Mast
- ◆ Refuge
- (H) Helicopter landing area with / without facilities
- Stream
- Flow line
- Crevasse
- Route standard/alternate
- Vehicular track
- Ice cliff
- Rock cliff
- Contour (20m interval)
- Contour (100m interval)
- Depression contour
- Lake (Height above or below sea level)
- Saline lake (>3 grams/litre salt)
- Moraine
- Ice
- Ice-free area

Management Zones

- Extent of Davis Station Recreation Limits map
- Limit of Station Operational Area
- Antarctic Specially Protected Area
Entry is prohibited without a permit. All activities must be in accordance with the management plan.
- Sensitive Area
- Lichen
- Moss
- Fossilised seaweed beds and calcareous tubes
No camping at Lichen Lake and Mossel Lake. Entry to Hawker and Magnetic Island is restricted.
- Danger: Hazardous creek under snow/ice
- Danger: Hazardous sea ice/tidal race. No travel on ice
- Thin ice. Melts out early. Check ice thickness
- Southern Elephant Seal moult location (Feb - May)
- Main Weddell Seal pupping area (Sept - Nov)
- Minor Weddell Seal pupping area (Sept - Nov)
Weddell seals may be found on sea-ice between the Sørsdal Glacier and Wyatt Earp Is, especially during the moult period (Dec - Mar)
- Adélie Penguin colony
- Cape Petrel colony
- Giant-petrel colony

CAUTION: Absence of the depiction of crevasses does not necessarily indicate a crevasse-free area.



For more detail see:
Davis Station Recreation Limits map
Map No. 13387



True, Grid and Magnetic North are shown diagrammatically for the zone 43 part of the map. Magnetic North is correct for 2008 and moves westerly by 0.13° each year.

Western limit of Station Operational Area is 5 km to seaward

