

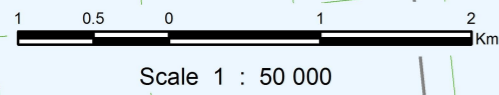
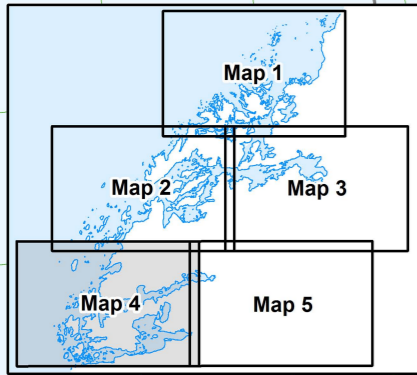
Vestfold Hills

Map 4 of 5

Edition 6

Horizontal Datum: WGS84
Projection: UTM Zones 43 and 44

Produced by the Australian Antarctic Data Centre
January 2012, Map Catalogue Number: 13982



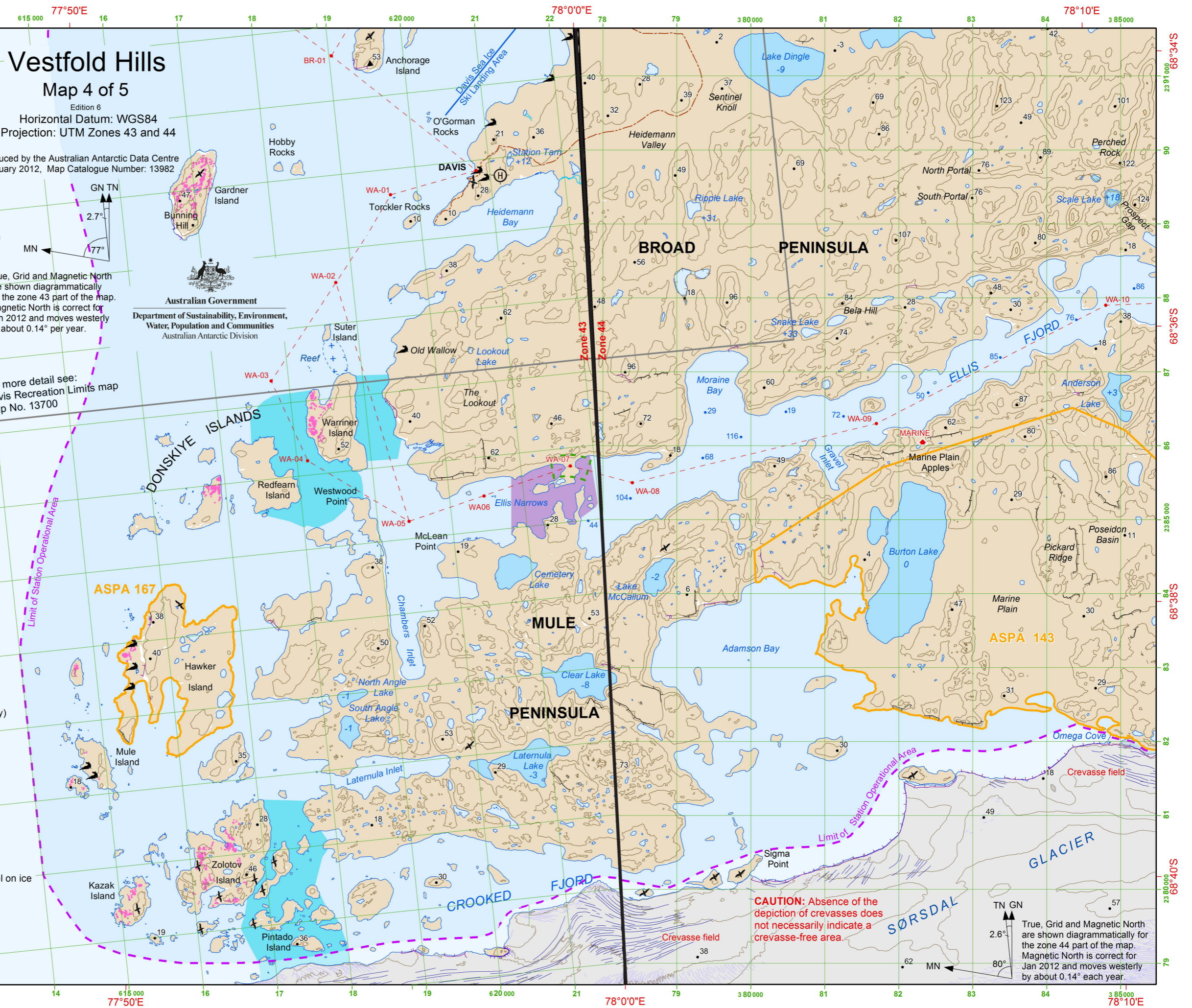
Legend

- Helicopter landing area with facilities
 - Route - approximate, Waypoint Use caution
 - Vehicular track
 - Stream
 - Flow line
 - Crevasse
 - Ice cliff
 - Rock cliff
 - Contour (20m interval)
 - Contour (100m interval)
 - Depression contour
 - Lake (Elevation above or below sea level)
 - Saline lake (>3 grams/litre salt)
 - Moraine
 - Ice-free area
 - Cape petrel colony
 - Snow petrel colony
 - Southern giant-petrel colony
 - Adélie penguin colony
 - Southern elephant seal haulout area (Jan - May)
 - Weddell seals may be found on sea-ice between the Sørdsdal Glacier and Wyatt Earp Is, especially during the moult period (Dec - Mar)
 - Antarctic Specially Protected Area
 - Limit of Station Operational Area
 - Danger: Hazardous sea ice/tidal race. No travel on ice
 - Thin ice. Melts out early. Check ice thickness
 - Area where land crossing with vehicles is acceptable
 - Extent of Davis Recreation Limits map
- Topographic data mapped from aerial photography
November 1994, April 1996 and February 1997.

True, Grid and Magnetic North are shown diagrammatically for the zone 43 part of the map. Magnetic North is correct for Jan 2012 and moves westerly by about 0.14° per year.

For more detail see:
Davis Recreation Limits map
Map No. 13700

Australian Government
Department of Sustainability, Environment,
Water, Population and Communities
Australian Antarctic Division



CAUTION: Absence of the depiction of crevasses does not necessarily indicate a crevasse-free area.

True, Grid and Magnetic North are shown diagrammatically for the zone 44 part of the map. Magnetic North is correct for Jan 2012 and moves westerly by about 0.14° each year.