

# VESTFOLD HILLS

Produced by the Australian Antarctic Data Centre, October 2001



78°00' E

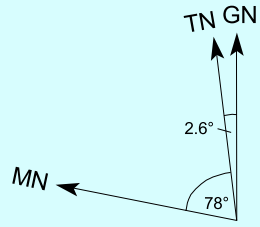
78°20' E



0 1 2 3 4 5 km

Horizontal Datum: WGS84  
Projection: UTM Zone 44  
Scale: 1:120 000  
Contour Interval: 50m

True, Grid and Magnetic North are shown diagrammatically for the centre of the map. Magnetic North is correct for 2001 and moves westerly by about 0.14° each year.



68°30' S

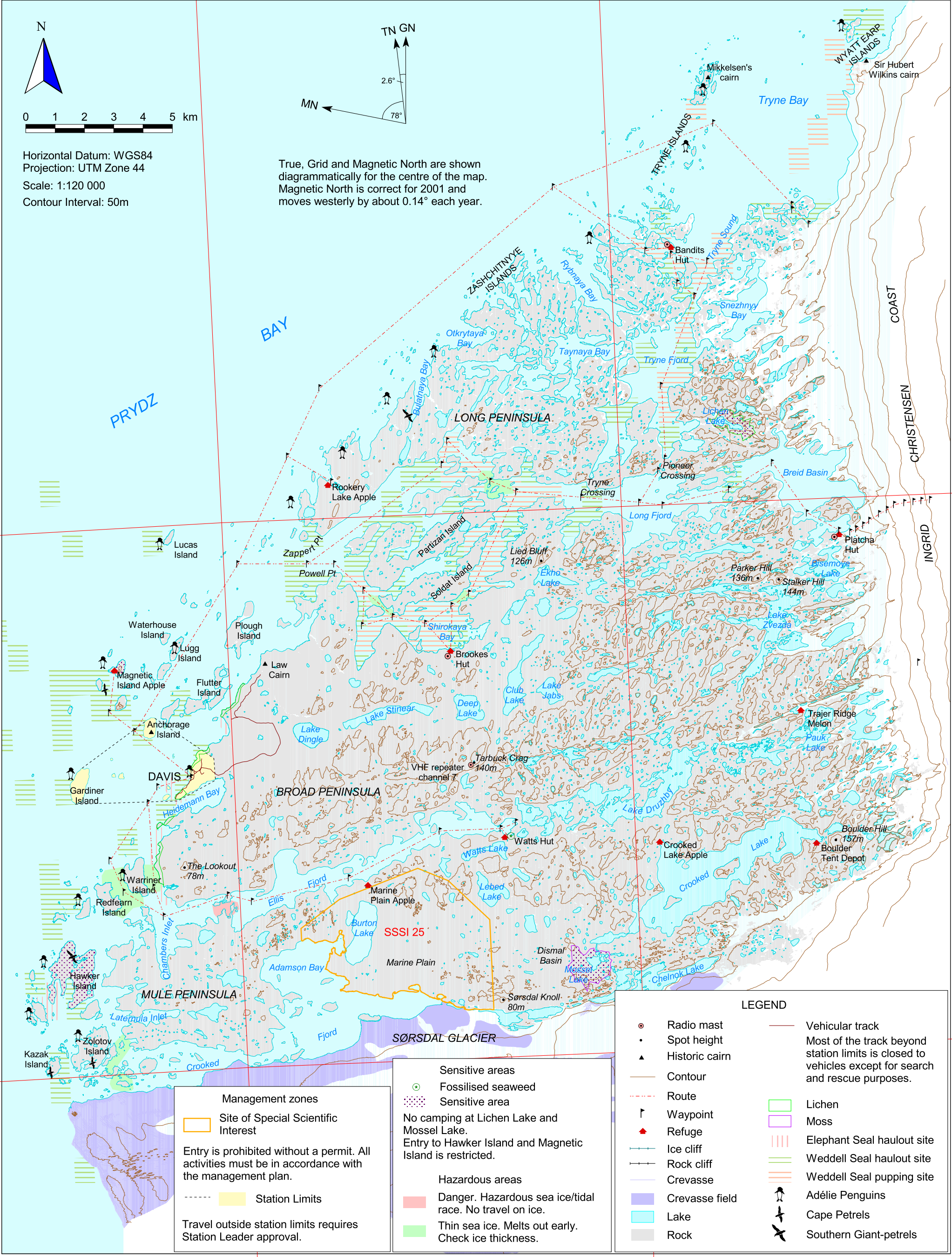
68°30' S

68°40' S

68°40' S

78°00' E

78°20' E



**Management zones**

Site of Special Scientific Interest

Entry is prohibited without a permit. All activities must be in accordance with the management plan.

Station Limits

Travel outside station limits requires Station Leader approval.

**Sensitive areas**

- Fossilised seaweed
- Sensitive area

No camping at Lichen Lake and Mossel Lake. Entry to Hawker Island and Magnetic Island is restricted.

**Hazardous areas**

- Danger. Hazardous sea ice/tidal race. No travel on ice.
- Thin sea ice. Melts out early. Check ice thickness.

LEGEND	
●	Radio mast
•	Spot height
▲	Historic cairn
—	Contour
---	Route
↑	Waypoint
▲	Refuge
—	Ice cliff
—	Rock cliff
—	Crevasse
—	Crevasse field
—	Lake
—	Rock
—	Vehicular track
Most of the track beyond station limits is closed to vehicles except for search and rescue purposes.	
—	Lichen
—	Moss
—	Elephant Seal haulout site
—	Weddell Seal haulout site
—	Weddell Seal pupping site
↑	Adélie Penguins
↑	Cape Petrels
↑	Southern Giant-petrels