

Australian Government
 Department of the Environment
 and Water Resources
 Australian Antarctic Division

TN GN
 0.3°
 MN
 99°
 True, Grid and Magnetic North
 are shown diagrammatically for
 the centre of this series of maps.
 Magnetic North is correct for
 2007 and moves westerly by
 about 0.12° per year.

- Legend**
- 102 Spot height
 - ▲ Monument
 - + Reef
 - ◆ Refuge
 - A-07 Waypoint
 - ◆ Cache
 - IRB landing site
 - Station year round/abandoned
 - ⊕ Helicopter landing area with/without facilities
 - Crevasse
 - Route
 - - - Ski route/sea ice route
 - - - Sea ice routes are approximate
 - Ice cliff
 - Rock cliff
 - - - Contour (20m interval) definite/approximate
 - - - Contour (100m interval) definite/approximate
 - Lake
 - Ice-free area
 - Moraine
 - Antarctic Specially Protected Area (ASPA)
 - Adélie penguin colony
 - Antarctic petrel nest/colony
 - Cape petrel nest/colony
 - Snow petrel nest/colony
 - South polar skua nest/colony
 - Southern fulmar nest/colony
 - Southern giant-petrel nest/colony
 - Wilsons storm petrel nest/colony
 - Southern elephant seal haulout site
 - Weddell seal haulout site
 - Weddell seal pupping site
- Entry is prohibited without a permit. All activities must be in accordance with the management plan.

Windmill Islands

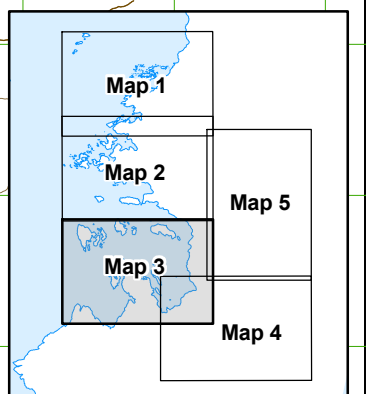
Map 3 of 5
 Edition 2

Horizontal Datum: WGS84
 Projection: UTM Zone 49



Scale 1 : 50 000

Produced by the Australian Antarctic Data Centre
 October 2007, Map Catalogue Number: 13428



CAUTION: Absence of the depiction of crevasses does not necessarily indicate a crevasse free area.