

Windmill Islands

Map 4 of 5

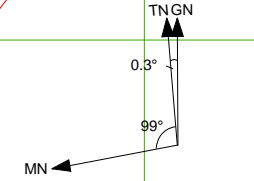
Edition 1

Horizontal Datum: WGS84
Projection: UTM Zone 49

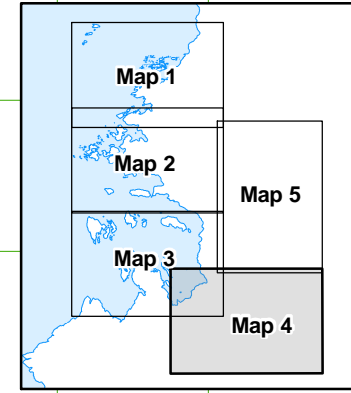


Scale 1 : 50 000

Produced by the Australian Antarctic Data Centre
September 2006, Map Catalogue Number: 13300



True, Grid and Magnetic North are shown diagrammatically for the centre of this series of maps. Magnetic North is correct for 2006 and moves westerly by about 0.12° per year.



CAUTION: Absence of the depiction of crevasses does not necessarily indicate a crevasse free area.

Legend

- 102 Spot height
- A-07 Waypoint
- Route
- Crevasse
- Ice cliff
- Rock cliff
- Contour (20m interval) definite/approximate
- Contour (100m interval) definite/approximate
- Ice-free area
- Moraine

Wpt Name	Latitude	Longitude	Wpt Description	Alt (m)
----------	----------	-----------	-----------------	---------

Robinsons Ridge Route				
Wpt Name	Latitude	Longitude	Wpt Description	Alt (m)
A-00	-66 16.943	110 31.622	Red Shed Heli Pad	35
A-01	-66 16.934	110 32.109	Lower Heli Pads	37
A-02	-66 17.103	110 32.238	Drum - station side of Penguin Pass	45
A-03	-66 17.355	110 32.638	Drum	40
A-04	-66 17.335	110 33.376	Drum - Robbo's turnoff	43
R-01	-66 17.473	110 33.803	Drum	
R-02	-66 18.690	110 35.739	Drum - Mitchell Peninsula turnoff	
R-03	-66 19.479	110 37.010	Drum	
R-04	-66 20.060	110 38.219	Drum	
R-05	-66 21.154	110 40.503	No marker - high point on route	
R-06	-66 21.472	110 40.049	Drum	
R-06A	-66 22.459	110 38.846	No marker - NE of spot height 144	
R-07	-66 22.114	110 37.784	Pole	
R-08	-66 22.145	110 36.126	Drum	
R-09	-66 22.192	110 36.016	Flour drum on pole	
R-10	-66 22.318	110 35.817	Drum - stay close to avoid ice cliffs	
ROBHUT	-66 22.405	110 35.129	Robinson's Ridge Hut	

Mitchell Peninsula Route to Sparkes Bay (from Robbo's Route)				
Wpt Name	Latitude	Longitude	Wpt Description	Alt (m)
M-01	-66 18.603	110 34.483	No marker - E of spot height 104	
M-02	-66 20.618	110 32.343	Wpt to Sparkes Bay - no marker	48

Casey Waypoint Information

12th September 2006

Wpt Name	Latitude	Longitude	Wpt Description	Alt (m)
Law Dome Route				
A-00	-66 16.943	110 31.622	Red Shed Heli pad	35
A-01	-66 16.934	110 32.109	Lower Heli Pads	37
A-02	-66 17.103	110 32.238	Drum - station side of Penguin Pass	45
A-03	-66 17.355	110 32.638	Drum	40
A-04	-66 17.335	110 33.376	Drum - Robbo's turnoff	43
A-05	-66 17.258	110 34.328	Drum	54
A-06	-66 17.153	110 35.613	Drum - Wilkes turnoff	103
A-07	-66 17.074	110 36.589	Drum	151
A-08	-66 16.936	110 39.372	Drum - S1 - Jack's / Law Dome / Skiway turnoff	242
D-01	-66 17.152	110 41.640	Flour Drum on steel pole	295
D-02	-66 18.712	110 51.692	Drum (signpost & radio masts) - Lanyon Junction	480
D-03	-66 19.256	110 55.361	Cane	519
D-04	-66 19.894	110 59.902	2 Flour drums on steel pole	562
D-05	-66 20.653	111 05.275	Drum (just visible) & steel pole	616
D-06	-66 21.377	111 10.481	Drum (just visible) & steel pole	669
D-07	-66 22.176	111 16.281	Drum (half buried) & cane	728
D-08	-66 22.699	111 19.958	Cane	755
D-09	-66 23.338	111 24.487	No marker	800
D-10	-66 24.059	111 29.599	Drum (just visible) & steel pole	847
D-11	-66 24.752	111 34.521	Drum	885
D-12	-66 25.483	111 39.701	Steel pole	930
D-13	-66 26.432	111 46.436	Steel pole	971
D-14	-66 26.981	111 50.783	Cane	1007
D-15	-66 27.322	111 54.180	Steel pole	1024
D-16	-66 27.556	111 57.243	2 Steel poles - Blyth Junction	1053
D-17	-66 28.631	112 00.671	Drum & Steel pole	1071
D-18	-66 29.895	112 04.727	No marker	1106
D-19	-66 30.704	112 07.372	No marker	1122
D-20	-66 31.197	112 08.932	No marker	1143
D-21	-66 31.916	112 11.236	Drum (just visible)	1159
D-22	-66 31.946	112 11.351	Steel pole - S2 Hatch turnoff	1159
D-23	-66 33.567	112 16.648	Antarctic Circle sign	1197
D-24	-66 35.759	112 23.673	Cane	1244
D-25	-66 37.035	112 27.905	Cane	1275
D-26	-66 38.108	112 31.438	Cane	1300
D-27	-66 39.756	112 36.866	Cane	1329
D-28	-66 41.601	112 42.919	Cane	1372
D-29	-66 43.938	112 45.393	No marker	1382
DSSHAT	-66 46.149	112 48.464	DSS Entry Hatch	1385

Wilkes Route				
Wpt Name	Latitude	Longitude	Wpt Description	Alt (m)
A-00	-66 16.943	110 31.622	Red Shed Heli Pad	35
A-01	-66 16.934	110 32.109	Lower Heli Pads	37
A-02	-66 17.103	110 32.238	Drum - station side of Penguin Pass	45
A-03	-66 17.355	110 32.638	Drum	40
A-04	-66 17.335	110 33.376	Drum - Robbo's turnoff	43
A-05	-66 17.258	110 34.328	Drum	54
A-06	-66 17.153	110 35.613	Drum - Wilkes turnoff	103
W-01	-66 16.623	110 36.135	Drum	
W-02	-66 16.350	110 35.661	Flour drum on pole	
W-03	-66 15.818	110 34.761	Drum	
W-04	-66 15.709	110 34.461	Flour drum on pole	
W-05	-66 15.725	110 33.845	Drum - stay N to avoid crevassing	
W-06	-66 15.701	110 33.565	Drum - stay N to avoid crevassing	
W-07	-66 15.535	110 33.342	Drum - stay N to avoid crevassing	
W-08	-66 15.503	110 32.531	Drum	
W-09	-66 15.423	110 32.050	Drum	
WILHIL	-66 15.405	110 32.088	Wilkes Hilton	

Jack's Donga Route				
Wpt Name	Latitude	Longitude	Wpt Description	Alt (m)
A-00	-66 16.943	110 31.622	Red Shed Heli Pad	35
A-01	-66 16.934	110 32.109	Lower Heli Pads	37
A-02	-66 17.103	110 32.238	Drum - station side of Penguin Pass	45
A-03	-66 17.355	110 32.638	Drum	40
A-04	-66 17.335	110 33.376	Drum - Robbo's turnoff	43
A-05	-66 17.258	110 34.328	Drum	54
A-06	-66 17.153	110 35.613	Drum - Wilkes turnoff	103
A-07	-66 17.074	110 36.589	Drum	151
A-08	-66 16.936	110 39.372	Drum - S1 - Jack's / Law Dome / Skiway turnoff	242
J-01	-66 15.383	110 39.214	Drum	184
J-02	-66 14.445	110 39.923	Drum	147
J-03	-66 13.841	110 39.606	Drum x 2	103
JACDON	-66 13.720	110 39.191	Jack's Donga	68

Primary Skiway Route				
Wpt Name	Latitude	Longitude	Wpt Description	Alt (m)
A-00	-66 16.943	110 31.622	Red Shed Heli Pad	35
A-01	-66 16.934	110 32.109	Lower Heli Pads	37
A-02	-66 17.103	110 32.238	Drum - station side of Penguin Pass	45
A-03	-66 17.355	110 32.638	Drum	40
A-04	-66 17.335	110 33.376	Drum - Robbo's turnoff	43
A-05	-66 17.258	110 34.328	Drum	54
A-06	-66 17.153	110 35.613	Drum - Wilkes turnoff	103
A-07	-66 17.074	110 36.589	Drum	151
A-08	-66 16.936	110 39.372	Drum - S1 - Jack's / Law Dome / Skiway turnoff	242
PRISKI	-66 17.208	110 44.529	Primary Skiway	357

S2 Hatch Route (from LD Route)				
Wpt Name	Latitude	Longitude	Wpt Description	Alt (m)
S2-01	-66 31.946	112 11.351	S2 Hatch turnoff	1159
S2-02	-66 31.162	112 12.008	Cane	1162
S2-03	-66 30.406	112 12.719	Cane	1165
S2HATC	-66 29.582	112 13.469	S2 Entry Hatch	1170