

Casey Waypoint Information

August 2009

Browning Peninsula Route

Wpt Name	Latitude	Longitude	Wpt Description	Alt (m)
A-00	-66 16.938	110 31.622	Red Shed Heli Pad	43
A-01	-66 16.934	110 32.104	Lower Heli Pads	37
A-02	-66 17.103	110 32.226	Drum - station side of Penguin Pass	45
A-03	-66 17.362	110 32.645	Drum	41
A-04	-66 17.335	110 33.376	Flour drum on pole - Robbo's turnoff	45
A-05	-66 17.258	110 34.328	Drum	54
A-06	-66 17.153	110 35.604	Flour drum on pole - Wilkes turnoff	100
A-07	-66 17.074	110 36.579	Flour drum on pole	147
A-08	-66 16.936	110 39.372	Drum - S1 - Jack's / Law Dome / Skiway turnoff	242
A-09	-66 19.139	110 44.212	Drum	361
A-10	-66 20.188	110 48.139	Drum	410
A-11	-66 21.261	110 52.014	Drum	448
A-12	-66 22.306	110 55.886	Drum	482
A-13	-66 23.378	110 59.743	Drum - Price's Corner - Browning turnoff	531
B-01	-66 28.628	110 55.054	Drum	415
B-02	-66 32.170	110 48.293	Drum	214
B-03	-66 32.411	110 44.330	Drum	135
B-04	-66 29.687	110 34.545	Drum	31
B-05	-66 29.200	110 33.620	Drum	61
B-06	-66 28.717	110 33.101	Drum	61
BROHUT	-66 28.680	110 32.971	Browning Hut	64
PETMEL	-66 26.877	110 30.477	Peterson Island Melon	7

Windmill Islands

Map 5 of 5

Edition 4

Horizontal Datum: WGS84
Projection: UTM Zone 49



Scale 1 : 50 000

Produced by the Australian Antarctic Data Centre
August 2009, Map Catalogue Number: 13655
© Commonwealth of Australia

Casey Skiway Route

Wpt Name	Latitude	Longitude	Wpt Description	Alt (m)
A-00	-66 16.938	110 31.622	Red Shed Heli Pad	43
A-01	-66 16.934	110 32.104	Lower Heli Pads	37
A-02	-66 17.103	110 32.226	Drum - station side of Penguin Pass	45
A-03	-66 17.362	110 32.645	Drum	41
A-04	-66 17.335	110 33.376	Flour drum on pole - Robbo's turnoff	45
A-05	-66 17.258	110 34.328	Drum	54
A-06	-66 17.153	110 35.604	Flour drum on pole - Wilkes turnoff	100
A-07	-66 17.074	110 36.579	Flour drum on pole	147
A-08	-66 16.936	110 39.372	Drum - S1 - Jack's / Law Dome / Skiway turnoff	242
C-01	-66 17.191	110 44.353	No marker	
CASSKI	-66 17.158	110 45.562	Casey Skiway 'Silver Chalet'	365

Mitchell Peninsula Route (from Robinsons Ridge Route)

Wpt Name	Latitude	Longitude	Wpt Description	Alt (m)
M-01	-66 19.603	110 34.483	No marker	
M-02	-66 20.515	110 31.861	Wpt to Sparkes Bay - no marker	

S2 Hatch Route (from Law Dome Route)

Wpt Name	Latitude	Longitude	Wpt Description	Alt (m)
S2-01	-66 31.162	112 12.008	Cane	1162
S2-02	-66 30.406	112 12.719	Cane	1165
S2HATC	-66 29.582	112 13.469	S2 Entry Hatch	1170

Inflatable Rescue Boat Landing Sites

Wpt Name	Latitude	Longitude	Wpt Description	Alt (m)
CWHARF	-66 16.668	110 32.065	Casey Wharf / Boat Ramp	0
IRBB1	-66 28.959	110 32.243	Browning Peninsula IRB landing site - rock anchors	0
IRBC1	-66 10.643	110 24.708	Chappel Island IRB landing site	0
IRBF1	-66 24.520	110 31.804	Ford Island IRB landing site	0
IRBFC1	-66 13.526	110 09.287	Charlton Island landing site 141205	0
IRBFD1	-66 13.772	110 10.351	Dewart Island landing site 141205	0
IRBFN1	-66 13.715	110 11.287	Nelly Island landing site 141205	0
IRBH1	-66 25.243	110 25.563	Holl Island IRB landing site	0
IRBP1	-66 26.782	110 30.252	Peterson Island IRB landing site	0
IRBP2	-66 27.389	110 29.345	Peterson Island IRB landing site	0
IRBR1	-66 21.958	110 35.057	Robinsons Ridge IRB landite site	0
IRBR2	-66 22.580	110 35.183	Robinsons Ridge IRB landing site	0
IRBS1	-66 16.765	110 30.083	Shirley Island IRB landing site	0
IRBW1	-66 15.356	110 31.488	Wilkes IRB landing site	0
KILREE	-66 16.470	110 31.859	Kilby Reef - STAY CLEAR!	0

Emergency Caches

Wpt Name	Latitude	Longitude	Wpt Description	Alt (m)
CACHEB	-66 00.947	111 04.279	Balaena Island Emergency Cache	22
CACHEF	-66 24.525	110 31.663	Ford Island Emergency Cache	18
CACHES	-66 16.940	110 29.130	Shirley Island Emergency Cache	30

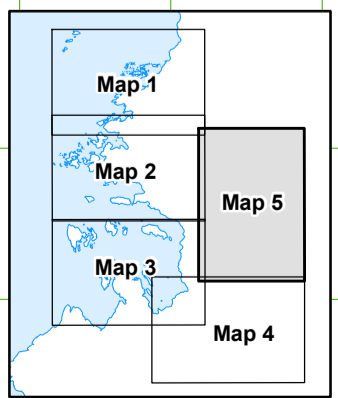
Legend

- 102 Spot height
- A-07 Route, Waypoint
- Crevasse
- Ice cliff
- Rock cliff
- Contour (20m interval) definite/approximate
- Contour (100m interval) definite/approximate

Cliffs, crevasses, ice-free areas, lakes and moraines mapped from aerial photography, January 1994.

Australian Government
Department of the Environment,
Water, Heritage and the Arts
Australian Antarctic Division

TNGN
0.3°
100°
MN
True, Grid and Magnetic North are shown diagrammatically for the centre of this map. Magnetic North is correct for 2009 and moves westerly by about 0.12° per year.



CAUTION: Absence of the depiction of crevasses does not necessarily indicate a crevasse free area.