

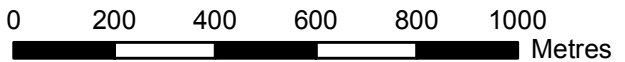
110°22'E 110°23'E 110°24'E 110°25'E 110°26'E 110°27'E 110°28'E 110°29'E 110°30'E 110°31'E 110°32'E 110°33'E 110°34'E 110°35'E



WINDMILL ISLANDS BATHYMETRY

EDITION 1

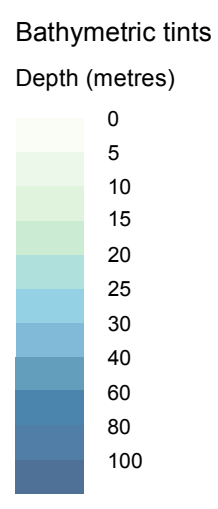
Scale 1 : 15 000



PROJECTION: Universal Transverse Mercator Zone 49
HORIZONTAL DATUM: WGS84
VERTICAL DATUM: Mean Sea Level

LEGEND

- Bathymetric contour (5m interval)
- Bathymetric contour (20 metre interval)
- Terrestrial contour (5 metre interval)
- Terrestrial contour (50 metre interval)
- Building (various colours)
- Road
- Lake
- Ice-free area



DATA SOURCES

The shaded bathymetry and the associated contours are from a dataset produced by Geoscience Australia and described by the metadata record 'A high resolution bathymetric grid of the nearshore area at Casey station, Antarctica'. This dataset is a combination of bathymetry from two hydrographic surveys conducted under AAP Project 3326:

1 A survey by the Royal Australian Navy in 2013/14. Refer to the metadata record 'Hydrographic survey H1545 by the RAN Australian Hydrographic Service at Casey, December 2013 to January 2014'.

2 A survey by Geoscience Australia and the Royal Australian Navy in 2014/15. Refer to the metadata records 'Hydrographic survey H1560 by the RAN Australian Hydrographic Service at Casey, December 2014 to February 2015' and by Geoscience Australia 'Seafloor Mapping Survey, Windmill Islands and Casey region, Antarctica, December 2014 - February 2015'.

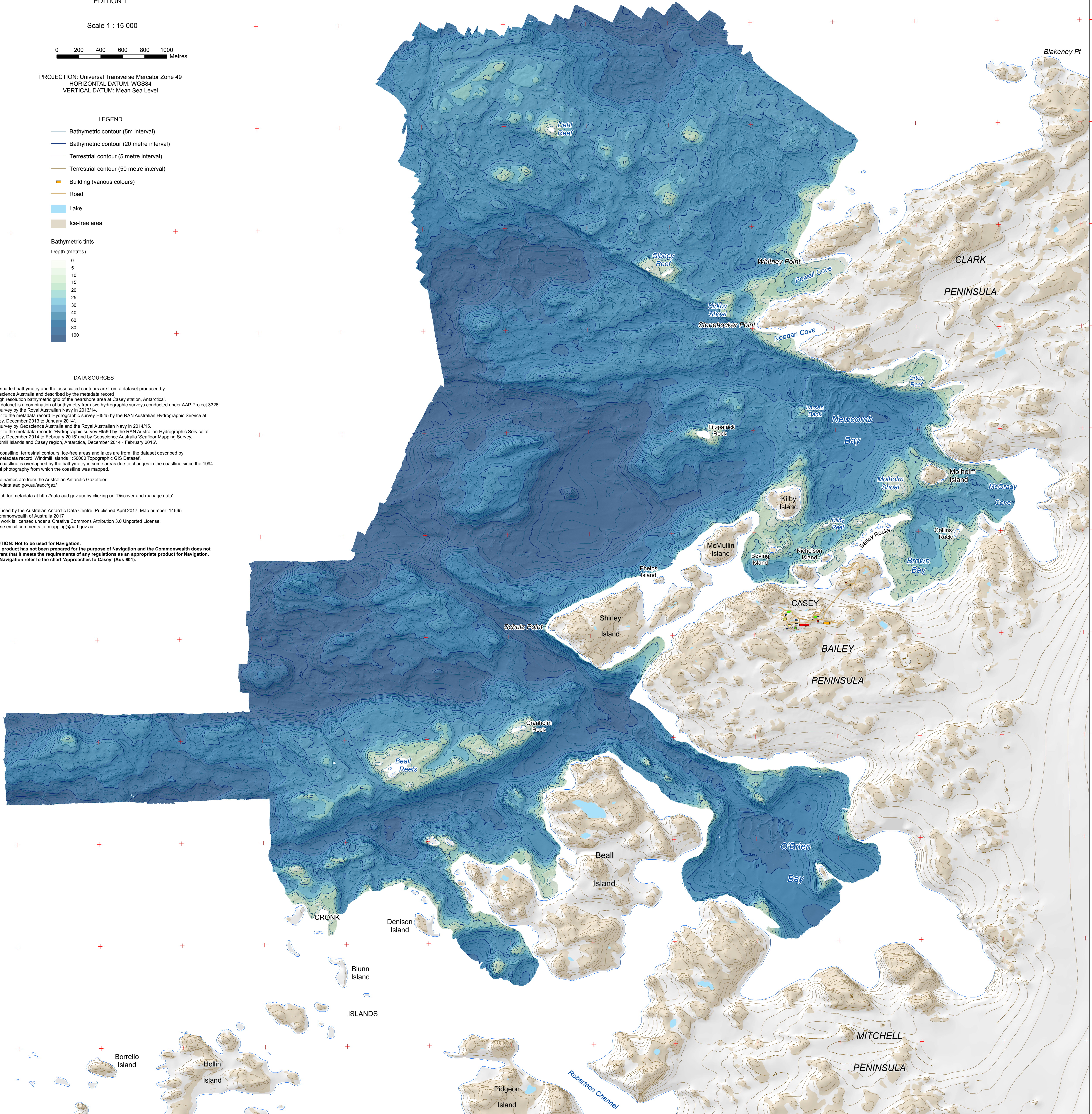
The coastline, terrestrial contours, ice-free areas and lakes are from the dataset described by the metadata record 'Windmill Islands 1:50000 Topographic GIS Dataset'. The coastline is overlapped by the bathymetry in some areas due to changes in the coastline since the 1994 aerial photography from which the coastline was mapped.

Place names are from the Australian Antarctic Gazetteer: <http://data.aad.gov.au/aad/gaz/>

Search for metadata at <http://data.aad.gov.au/> by clicking on 'Discover and manage data'.

Produced by the Australian Antarctic Data Centre. Published April 2017. Map number: 14595.
© Commonwealth of Australia 2017
This work is licensed under a Creative Commons Attribution 3.0 Unported License.
Please email comments to: mapping@aad.gov.au

CAUTION: Not to be used for Navigation.
This product has not been prepared for the purpose of Navigation and the Commonwealth does not warrant that it meets the requirements of any regulations as an appropriate product for Navigation. For Navigation refer to the chart 'Approaches to Casey' (Aus 601).



110°22'E 110°23'E 110°24'E 110°25'E 110°26'E 110°27'E 110°28'E 110°29'E 110°30'E 110°31'E 110°32'E 110°33'E 110°34'E 110°35'E

66°13'0"S 66°14'S 66°15'S 66°16'S 66°17'S 66°18'S 66°19'S

66°13'0"S 66°14'S 66°15'S 66°16'S 66°17'S 66°18'S 66°19'S