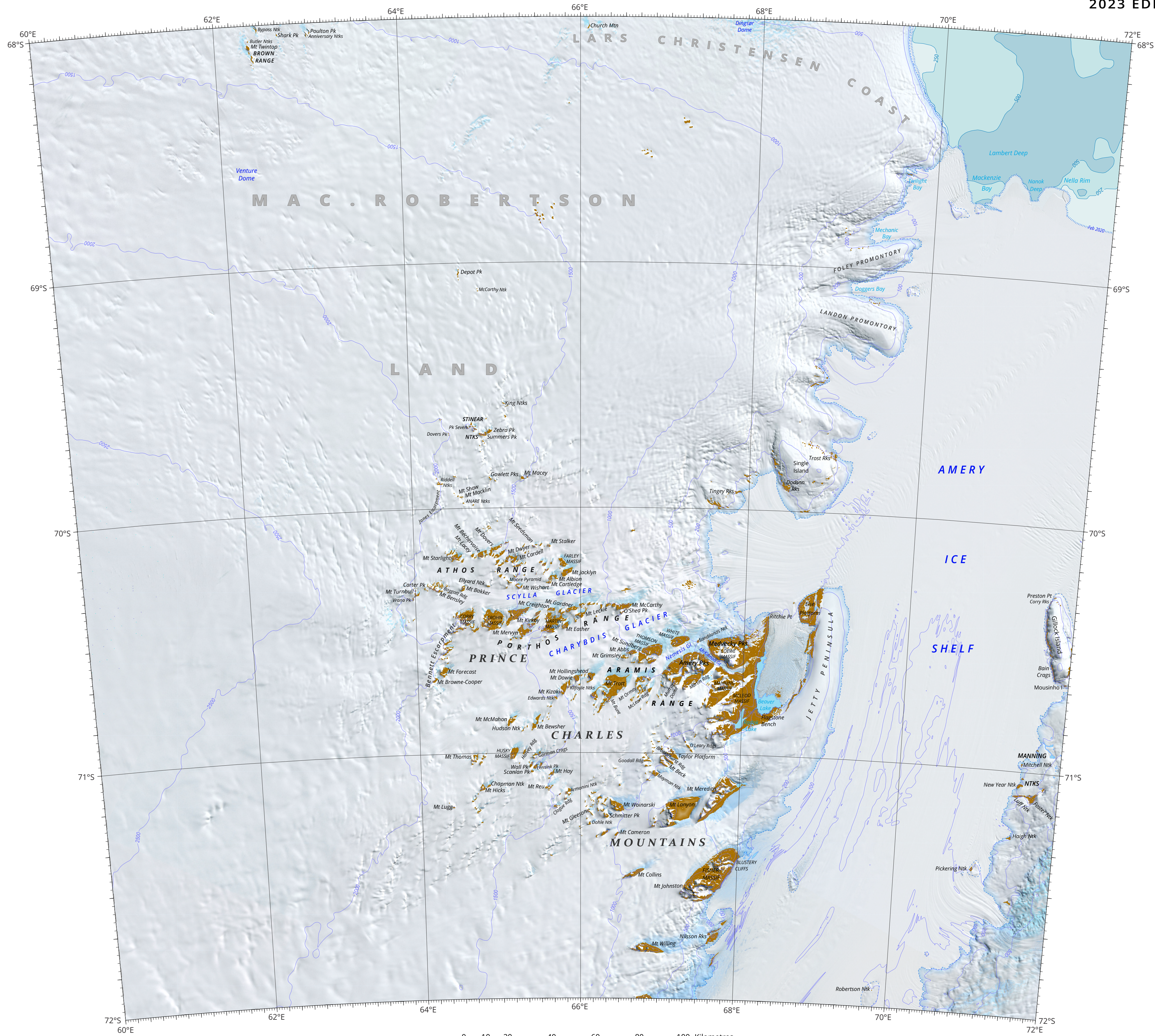


1:1 000 000 ANTARCTIC TOPOGRAPHIC SERIES

INTERNATIONAL MAP OF THE WORLD

SR 41-42
2023 EDITION



Produced by
AUSTRALIAN ANTARCTIC DIVISION
Map Catalogue No.15578
SR 41-42 2023 Edition
Published December 2023
ISBN 978-1-876934-62-0

0 10 20 40 60 80 100 Kilometres

Warning: This map is not intended for navigation purposes.
Refer to data.aad.gov.au/metadata/1million_map_topo_series_2023 for map details including data sources, nomenclature, symbology and downloads.

Projection: Lambert Conformal Conic
Central Meridian: 66°00'E
Standard Parallels: 68°40'S and 71°20'S
Horizontal Datum: WGS 1984
Vertical Datum: Mean Sea Level
Latitude of Origin: 50°00'S
Elevation in metres

For further information contact:
Telephone: +61 3 6232 3519
Email: mapping@antarctica.gov.au
Web: antarctica.gov.au
© Commonwealth of Australia 2023



CAUTION:
Absence of the depiction of crevasses does not indicate a crevasse-free area.