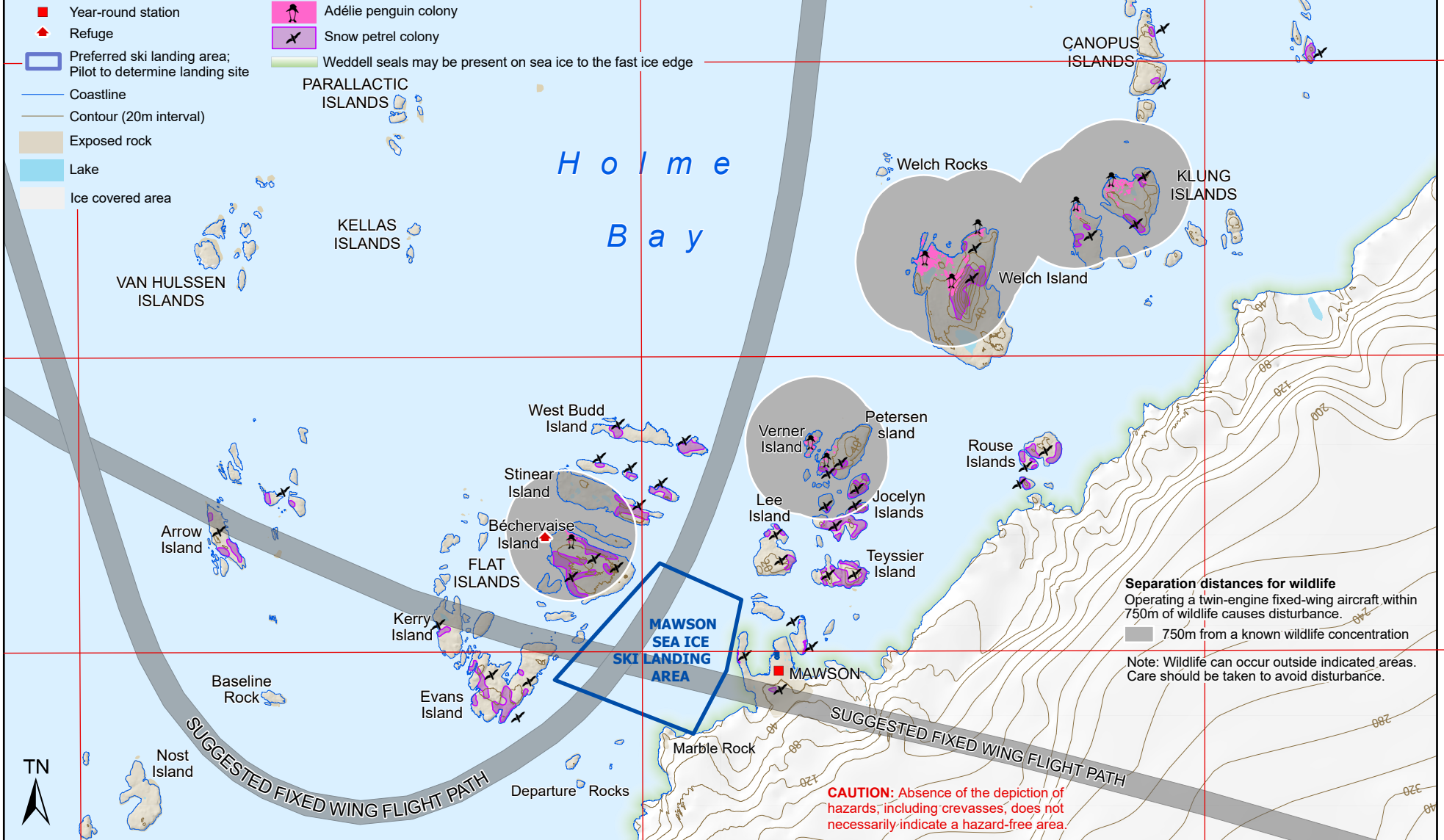




# Mawson fixed-wing suggested flight paths



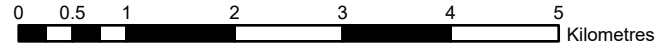
**Separation distances for wildlife**  
 Operating a twin-engine fixed-wing aircraft within 750m of wildlife causes disturbance.

■ 750m from a known wildlife concentration

Note: Wildlife can occur outside indicated areas. Care should be taken to avoid disturbance.

**CAUTION:** Absence of the depiction of hazards, including crevasses, does not necessarily indicate a hazard-free area.

Australian Government  
 Department of Climate Change, Energy,  
 the Environment and Water  
 Australian Antarctic Division



Projection: UTM Zone 41. Horizontal Datum: WGS84

Produced by the Australian Antarctic Data Centre  
 October 2023, Map Catalogue No. 15982  
 © Commonwealth of Australia 2023

62°40'E

62°50'E

63°E

67°32'S

67°34'S

67°36'S