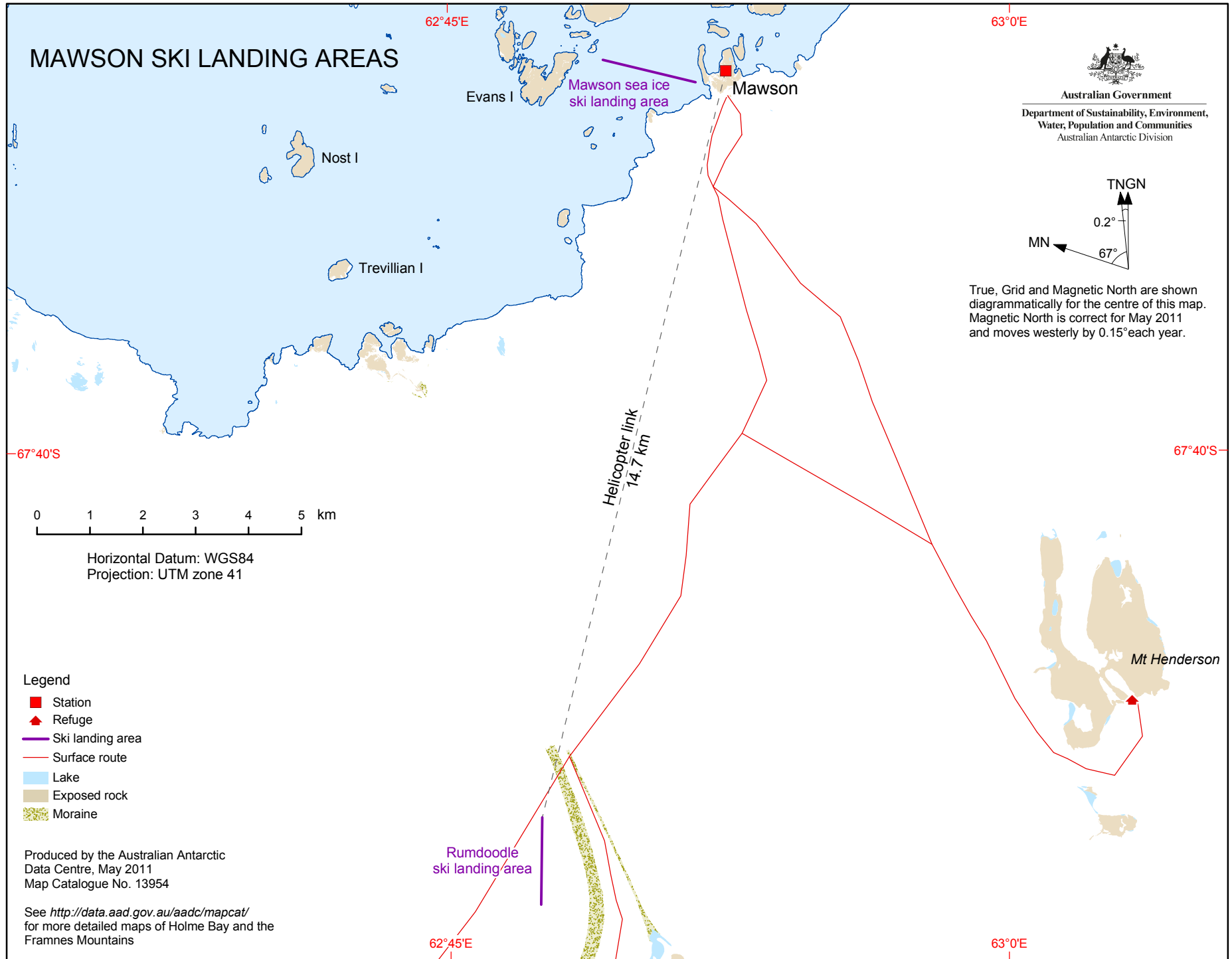
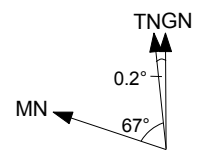


MAWSON SKI LANDING AREAS



Australian Government
Department of Sustainability, Environment,
Water, Population and Communities
Australian Antarctic Division



True, Grid and Magnetic North are shown diagrammatically for the centre of this map. Magnetic North is correct for May 2011 and moves westerly by 0.15° each year.

- Legend
- Station
 - Refuge
 - Ski landing area
 - Surface route
 - Lake
 - Exposed rock
 - Moraine

Produced by the Australian Antarctic Data Centre, May 2011
Map Catalogue No. 13954
See <http://data.aad.gov.au/aadc/mapcat/> for more detailed maps of Holme Bay and the Framnes Mountains