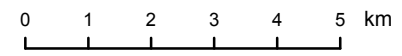


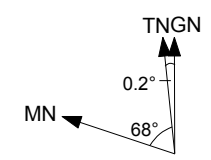


Australian Government
 Department of the Environment and Energy
 Australian Antarctic Division

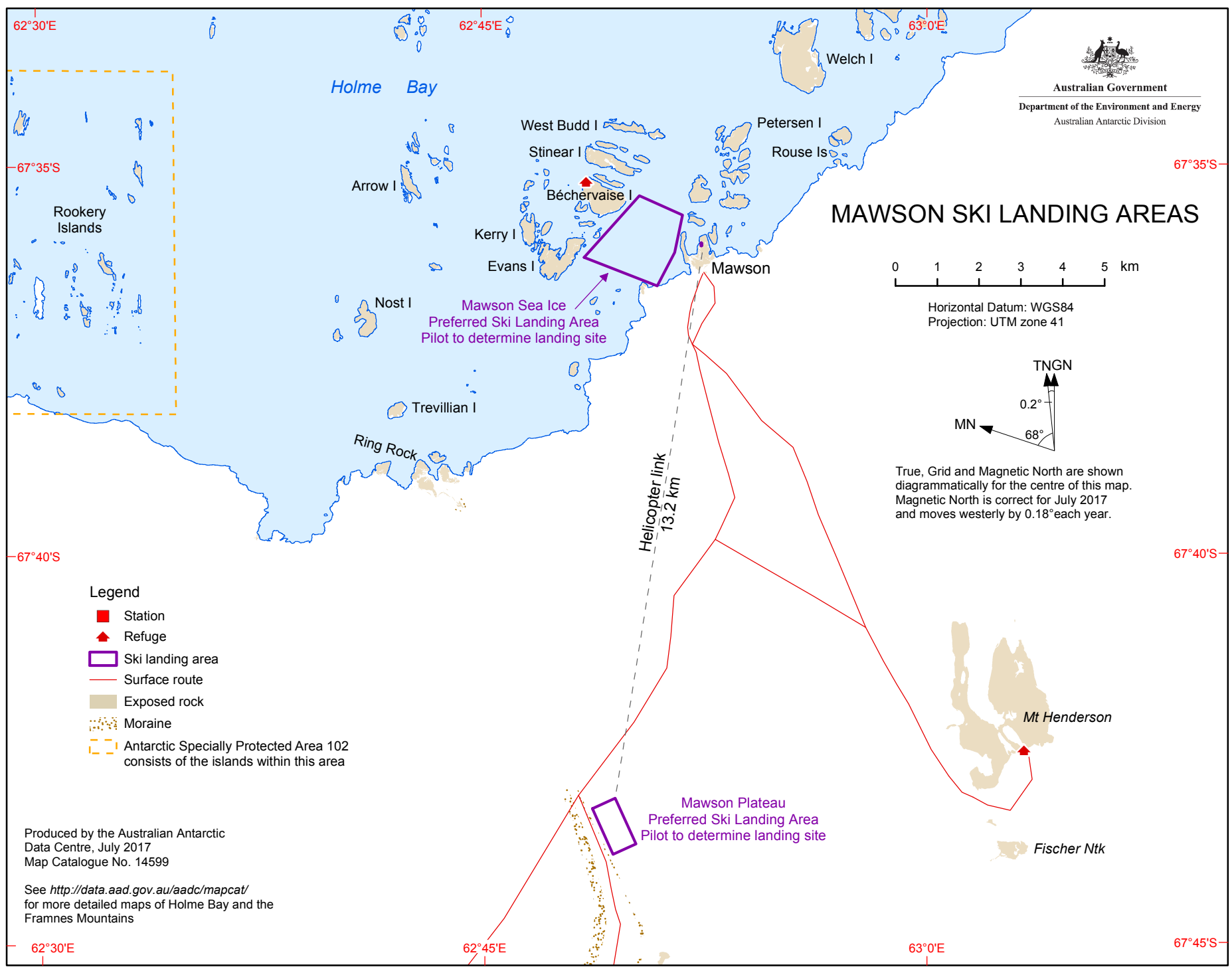
MAWSON SKI LANDING AREAS



Horizontal Datum: WGS84
 Projection: UTM zone 41



True, Grid and Magnetic North are shown diagrammatically for the centre of this map. Magnetic North is correct for July 2017 and moves westerly by 0.18° each year.



- Legend**
- Station
 - ▲ Refuge
 - Ski landing area
 - Surface route
 - Exposed rock
 - ⋯ Moraine
 - ⌞ Antarctic Specially Protected Area 102 consists of the islands within this area

Produced by the Australian Antarctic Data Centre, July 2017
 Map Catalogue No. 14599

See <http://data.aad.gov.au/aadc/mapcat/> for more detailed maps of Holme Bay and the Framnes Mountains