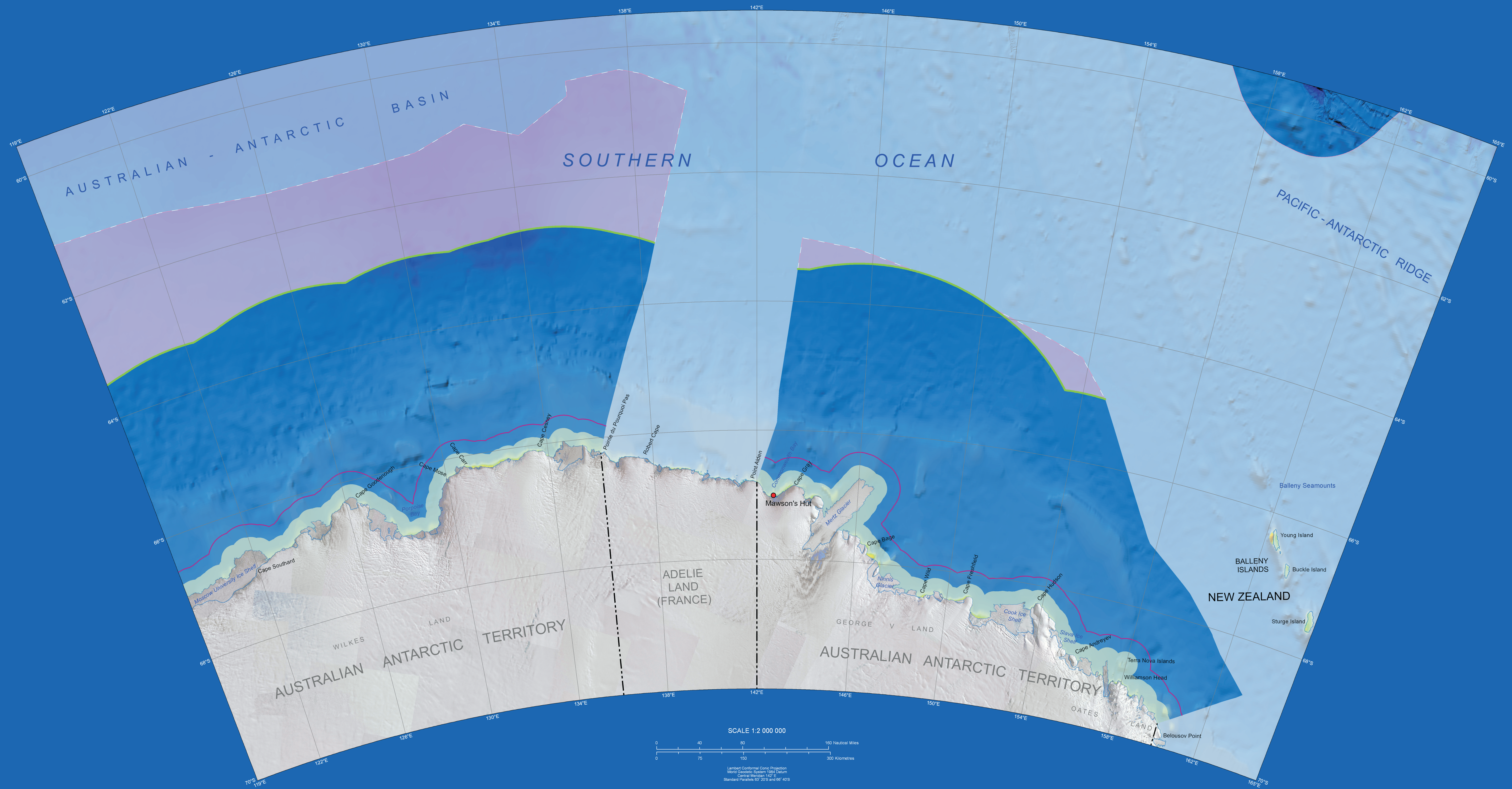


Australia's Maritime Jurisdiction off the Australian Antarctic Territory (East)



- Area of Australia's Territorial Sea
- Australia's Contiguous Zone limit
- Australia's Exclusive Economic Zone limit
- Outer limit of Australia's continental shelf from Macquarie Island, Tasmania

Outer limit of extended continental shelf yet to be resolved (including Australian Antarctic Territory where Australia requested the Commission on the Limits of the Continental Shelf not consider this region for the time being and areas of potential delimitation)

Depiction of Marine Areas

Clear regions on this map depict areas where Australia exercises water column, seabed and subsoil jurisdiction, seabed and subsoil jurisdiction only, or fisheries jurisdiction only, as defined in certain treaties.

Light pink shading depicts areas submitted and yet to be resolved (including Australian Antarctic Territory where Australia requested the Commission on the Limits of the Continental Shelf not consider this region for the time being).

Light white shading depicts areas beyond Australian jurisdiction.

QUALIFICATIONS RELATING TO THIS MAP:

1. This map is indicative only of the location of the territorial sea baselines and the outer limits of Australia's maritime zones, and should NOT be used as a definitive source of information. Some limits may be subject to change.
2. The territorial sea baselines and certain maritime zones are established under the Seas and Submerged Lands Act 1973.
3. Certain limits and boundaries are established under various treaties with neighbouring States (not all are in force).
4. In the event of an inconsistency between this map, and the territorial sea baselines or limits established under Australian legislation or the treaties, then the legislative instruments or the treaties shall prevail.
5. Except as required by law, the Commonwealth will not be liable for any loss, damage, expense or cost (including any incidental or consequential loss or damage) incurred by any person or organisation arising out of use of, or reliance on, this map.

SCALE 1:2 000 000

0 40 80 160 Nautical Miles

0 75 150 300 Kilometres

Lambert Conformal Conic Projection
 World Geodetic System 1984 datum
 Central Meridian 142° E
 Standard Parallels 62° 30' S and 66° 40' S

Background bathymetry image is derived from a grid by W.H.F. Smith and D.T. Sandwell, Global Seabed Topography, from Satellite Altimetry and Ship Depth Soundings, Science 277, pp. 1956-1962, 28 September, 1997.
 Background land imagery derived from Blue Marble, NASA's Earth Observatory.
 © Commonwealth of Australia, Geoscience Australia (2013) - GeoCat 69792

