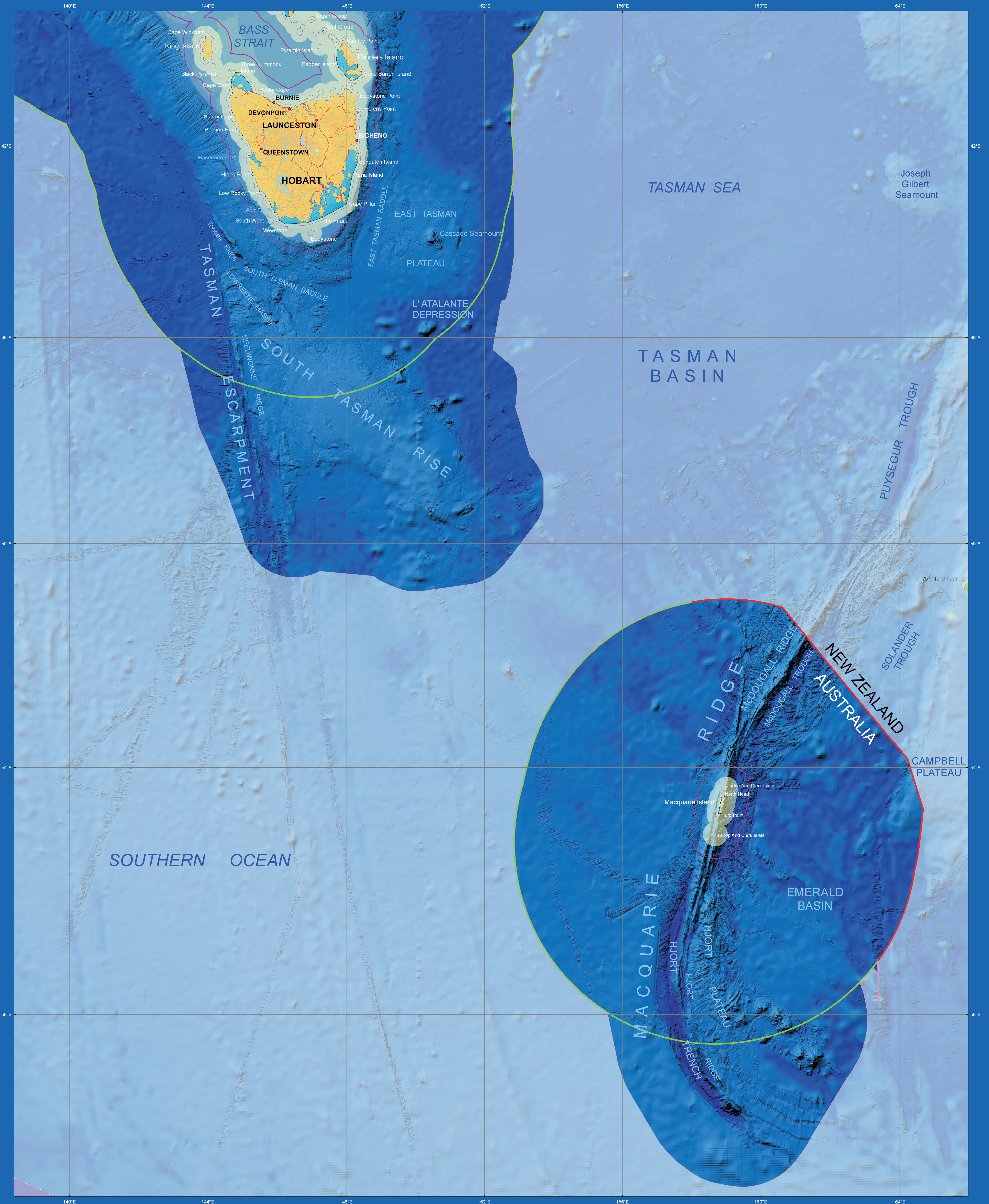


Australia's Maritime Jurisdiction around the State of Tasmania



- | | | | | | |
|--|---|---|---|---|--|
|  | Land |  | Limit of Coastal Waters |  | Outer limit of Australia's continental shelf |
|  | Reef/Intertidal |  | Area of Australia's Territorial Sea |  | Exclusive economic zone and continental shelf treaty boundary with an opposite or adjacent State |
|  | Area of Australia's Internal Waters |  | Australia's Contiguous Zone limit |  | Continental shelf treaty boundary with an opposite or adjacent State |
|  | Those parts of Australia's territorial sea baseline that traverse water |  | Australia's Exclusive Economic Zone limit |  | Outer limit of extended continental shelf yet to be resolved. |

Depiction of Marine Areas

Clear regions on this map depict areas where Australia exercises water column, seabed and subsoil jurisdiction, seabed and subsoil jurisdiction only, or fisheries jurisdiction only, as defined in certain treaties.

Light pink shading depicts areas submitted and yet to be resolved (including Australian Antarctic Territory where Australia requested the Commission on the Limits of the Continental Shelf not consider this region for the time being).

Light white shading depicts areas beyond Australian jurisdiction.

QUALIFICATIONS RELATING TO THIS MAP

- This map indicates only the location of the territorial sea baselines and the outer limits of Australia's maritime zones, and should NOT be used as a definitive source of information. Some limits may be subject to change.
- The territorial sea baselines and certain maritime zones are established under the Seas and Submerged Lands Act 1973.
- Waters designated as Australia's Internal Waters are internal waters of Australia for the purposes of international law. They do not equate with waters within the limits of the states of the Northern Territory for constitutional purposes. The extent of the latter waters is determined by the Letters Patent relevant to each state and the Northern Territory and the common law.
- Certain limits and boundaries are established under the Treaty between the Government of Australia and the Government of New Zealand Establishing Certain Exclusive Economic Zone Boundaries and Continental Shelf Boundaries of 26 July 2004 (in force 25 January 2005).
- Limits of coastal waters adjacent to each of the Australian States and of the Northern Territory are established under the Coastal Waters (State Powers) Act 1980, Coastal Waters (Northern Territory Powers) Act 1980 and the Offshore Petroleum and Greenhouse Gas Storage Act 2006.
- In the event of any inconsistency between this map and the territorial sea baselines or limits established under Australian legislation or the treaties, then the legislative instruments or the treaties shall prevail.
- Expenses incurred by law, the Commonwealth will not be liable for any loss, damage, expense or cost (including any incidental or consequential loss or damage) incurred by any person or organisation arising out of use of, or reliance on, this map.

SCALE 1:2 300 000

0 40 80 Nautical Miles
0 80 160 Kilometres

World Geodetic System 1984 Datum
Central Meridian 152° E
Tonic scale at 50° S

Mapcarta Projection
Background bathymetry image is derived from a combination of a B and a second bathymetry and topographic grid by Geoscience Australia 2009 and a grid by W.H.F. Smith and D.J. Sandwell Global Geospatial Topography from Seafloor Morphology and Ship Depth Soundings, Science 277: 19, 1992.

28 September 1999
© Commonwealth of Australia, Geoscience Australia (2010)
GeoCAT 70315

