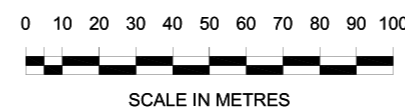


LEGEND

- Fuel Spill Equipment Container
- Predicted Oil Flow Directions
- Drum Farm
- Mobile Transfer Pump
- Helipad
- Temporary Layflat Hose
- Fixed Fuel Pipeline
- Fixed Fuel Line - in Culvert
- Fixed Fuel Line - Under Ice
- Valve Drain Location - on Fixed Fuel Line
- Mini Oil Spill Kit
- Bryophytes
- Buellia frigida*
- Umbilicaria decussata*
- Snow Petrel Nesting Sites
- Melt Lake
- Station Limits
- Extended Station Limits
- ASPA Antarctic Special Protected Area
- MPH Main Power House
- EPH Emergency Power House
- CUB Utility Building



CAUTION: Absence of the depiction of hazards, including crevasses, does not necessarily indicate a hazard free area.

This document is copyright and the property of the Australian Government. It may not be retained, copied or used in part or in whole without the express permission of the Australian Antarctic Division.			Drawn: B.Gogoll
			Checked: Cameron Frost
4	As at November 2020	13/11/2020	C.Frost
3	CAUTION note added	21/11/2017	C.Frost
2	As at February 2016	17/02/2016	C.Frost
1	As at June 2014 & drawing responsibility checked and reassigned	27/06/2014	C.Frost
Supersedes AAD Dwg No. C/01/03 Sheet 1 (Revision 3)			
	REVISION	DATE	APPD
		Date of Issue:	20/11/2008
		Date for Revision:	



Australian Government
Department of the Environment and Energy
Australian Antarctic Division

Annex B: Casey Station
Spill Risk Assessment Map
Land & Marine - Based Spills

Drawing No.	C/08/02
Sheet No. 1 of	Maximo Location L1001
Original Dwg. Size	A2