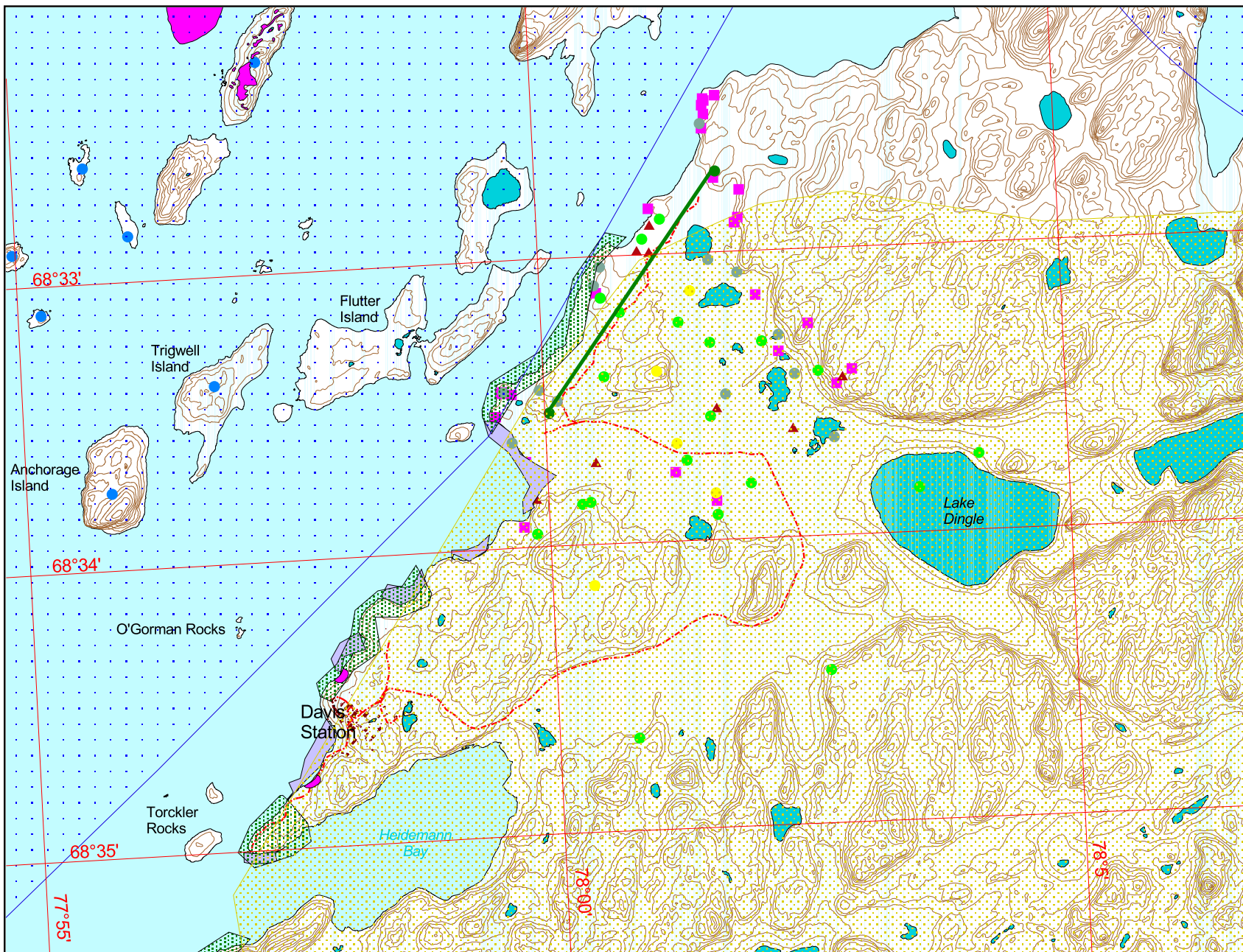


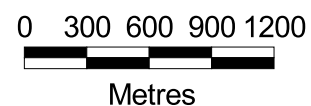
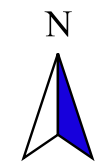
Air Transport Scoping Study - Vestfold Hills

Produced by Australian Antarctic Data Centre
July 1999



- Potential airstrip site
- Vehicle track
- Contour (5 m interval)
- Buildings
- Lake/tarn
- Algae
- Penguins
- Seals
- Skuas
- Snow Petrels
- Wilson's Storm Petrels
- Lichen
- Microorganisms
- Adélie Penguins
- Elephant Seals
- Weddell Seals

NOTE:
 1 The inclusion of known flora and fauna data does not imply that this information is complete
 2 Adélie Penguins and Emperor Penguins wander through the whole area



1:36,000

Projection: UTM Zone 44
 Horizontal Datum: WGS84
 Vertical Datum: MSL

FIGURE 3