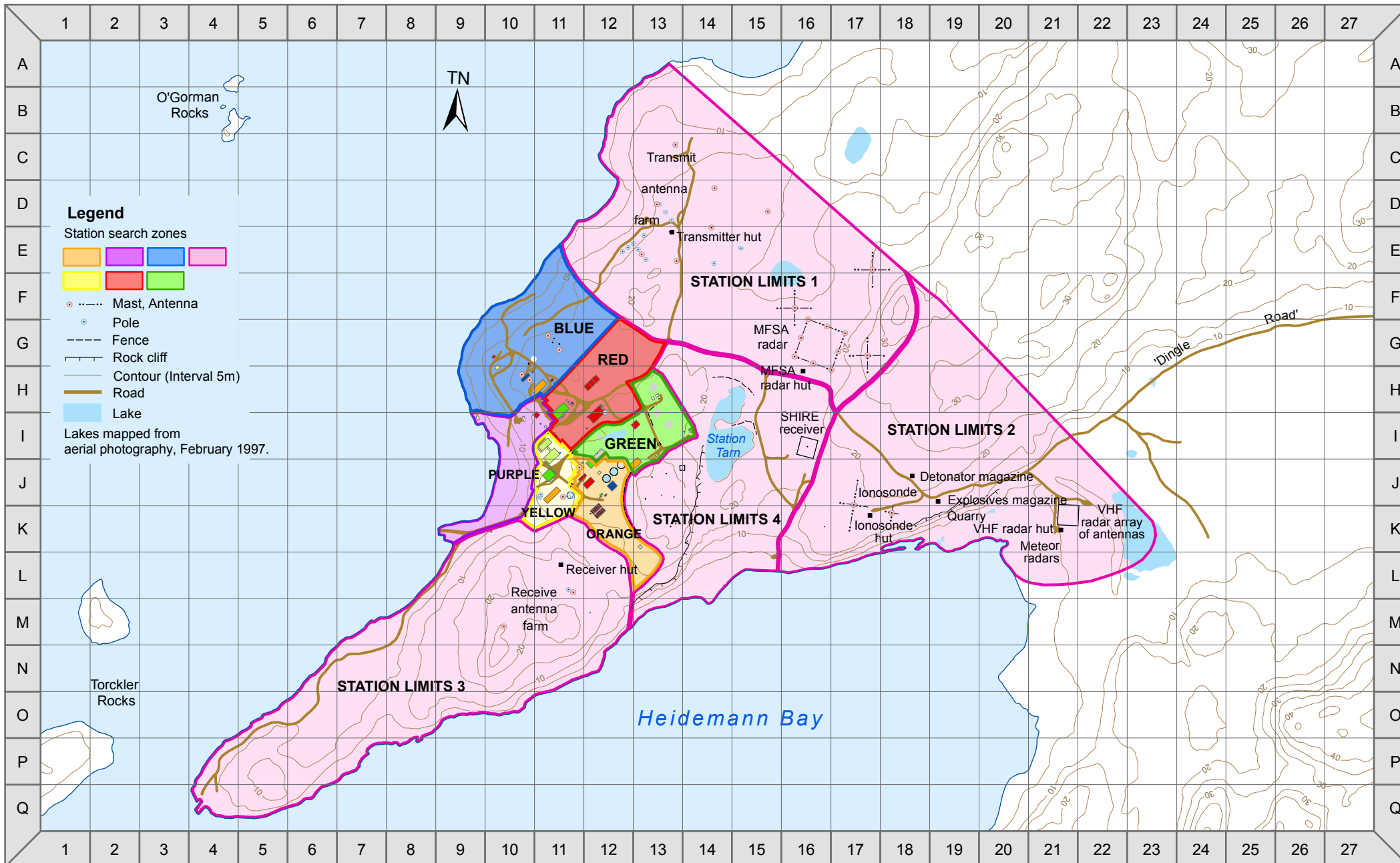


DAVIS

STATION SEARCH ZONES MAP 2

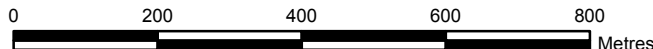


Australian Government
 Department of Sustainability, Environment,
 Water, Population and Communities
 Australian Antarctic Division



- Legend**
- Station search zones
- -
- Mast, Antenna
 - Pole
 - Fence
 - Rock cliff
 - Contour (Interval 5m)
 - Road
 - Lake
- Lakes mapped from aerial photography, February 1997.

Horizontal Datum: WGS84
 Projection: UTM Zone 43
 Produced by the Australian Antarctic Data Centre, Oct 2012



Map available at: <http://data.aad.gov.au/aadc/mapcat/>
 Map Catalogue No. 14138
 © Commonwealth of Australia 2012