

Framnes Mountains

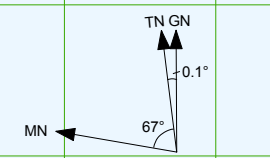
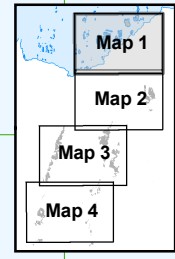
Map 1 of 4

Edition 4

Horizontal Datum: WGS84
Projection: UTM Zone 41

Scale 1 : 50 000

Produced by the Australian Antarctic Data Centre
August 2011, Map Catalogue Number: 13940
© Commonwealth of Australia



True, Grid and Magnetic North are shown diagrammatically for the centre of this map. Magnetic North is correct for Jan 2011 and moves westerly by about 0.15° per year.

Australian Government
Department of Sustainability, Environment,
Water, Population and Communities
Australian Antarctic Division

CAUTION: All areas away from the routes shown on this map are potentially hazardous due to crevasses.

Legend

- Mast
- Refuge
- Spot height
- H-02 Route, Waypoint
- Contour (20m interval)
- Contour (100m interval)
- Boundary of blue ice area
- Flow line
- Ice cliff
- Rock cliff
- Melt stream
- Snow petrel colony
- Wilson's storm petrel colony
- Adélie penguin colony
- Lake
- Scree
- Moraine
- Blue ice
- Ice-free area
- Ice hillock

Limit of Station Operational Area
The Station Leader may grant permission for travel within this boundary. Operations outside this boundary require Head Office approval.

Topographic data mapped from aerial photography March, April 1996 and SPOT satellite imagery March 1988.

