

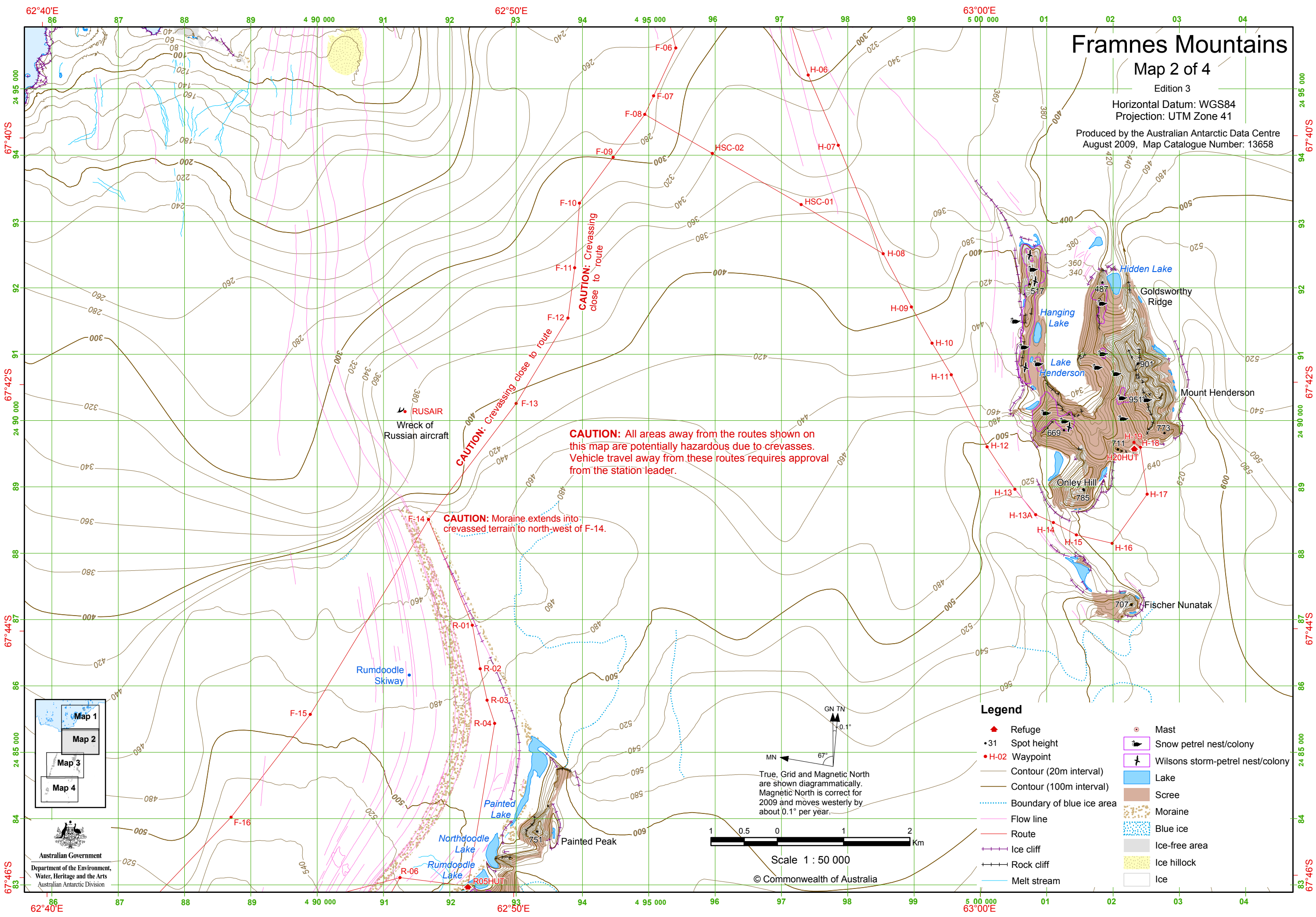
# Framnes Mountains

## Map 2 of 4

Edition 3

Horizontal Datum: WGS84  
Projection: UTM Zone 41

Produced by the Australian Antarctic Data Centre  
August 2009, Map Catalogue Number: 13658

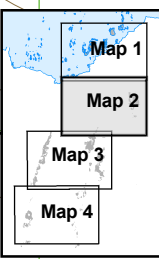


**CAUTION:** All areas away from the routes shown on this map are potentially hazardous due to crevasses. Vehicle travel away from these routes requires approval from the station leader.

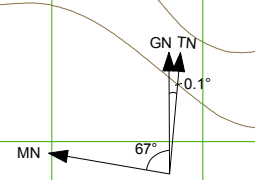
**CAUTION:** Moraine extends into crevassed terrain to north-west of F-14.

**CAUTION:** Crevassing close to route

**CAUTION:** Crevassing close to route



Australian Government  
Department of the Environment,  
Water, Heritage and the Arts  
Australian Antarctic Division



True, Grid and Magnetic North are shown diagrammatically. Magnetic North is correct for 2009 and moves westerly by about 0.1° per year.



Scale 1 : 50 000

© Commonwealth of Australia

### Legend

- ▲ Refuge
- 31 Spot height
- H-02 Waypoint
- Contour (20m interval)
- Contour (100m interval)
- ..... Boundary of blue ice area
- Flow line
- Route
- Ice cliff
- Rock cliff
- Melt stream
- Mast
- Snow petrel nest/colony
- Wilsons storm-petrel nest/colony
- Lake
- Scree
- Moraine
- Blue ice
- Ice-free area
- Ice hillock
- Ice