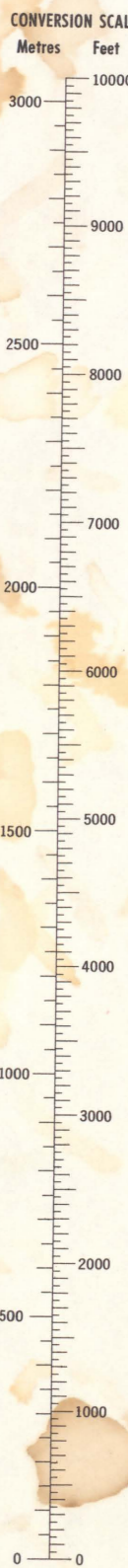
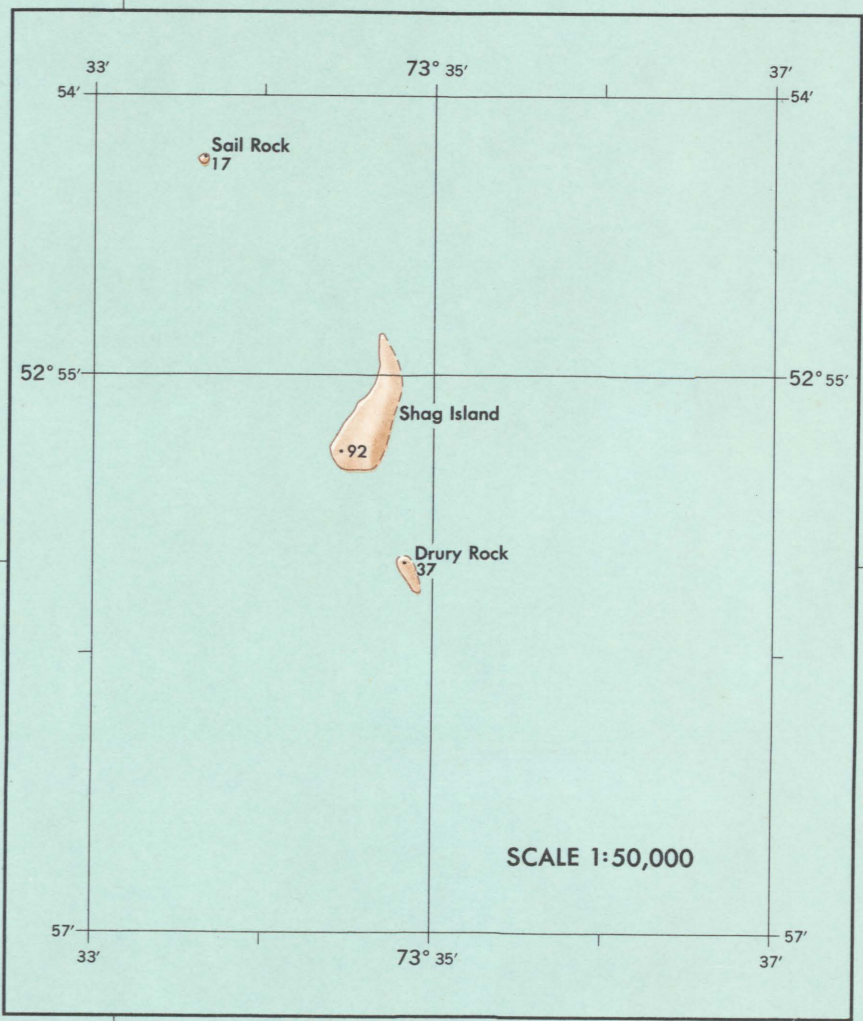
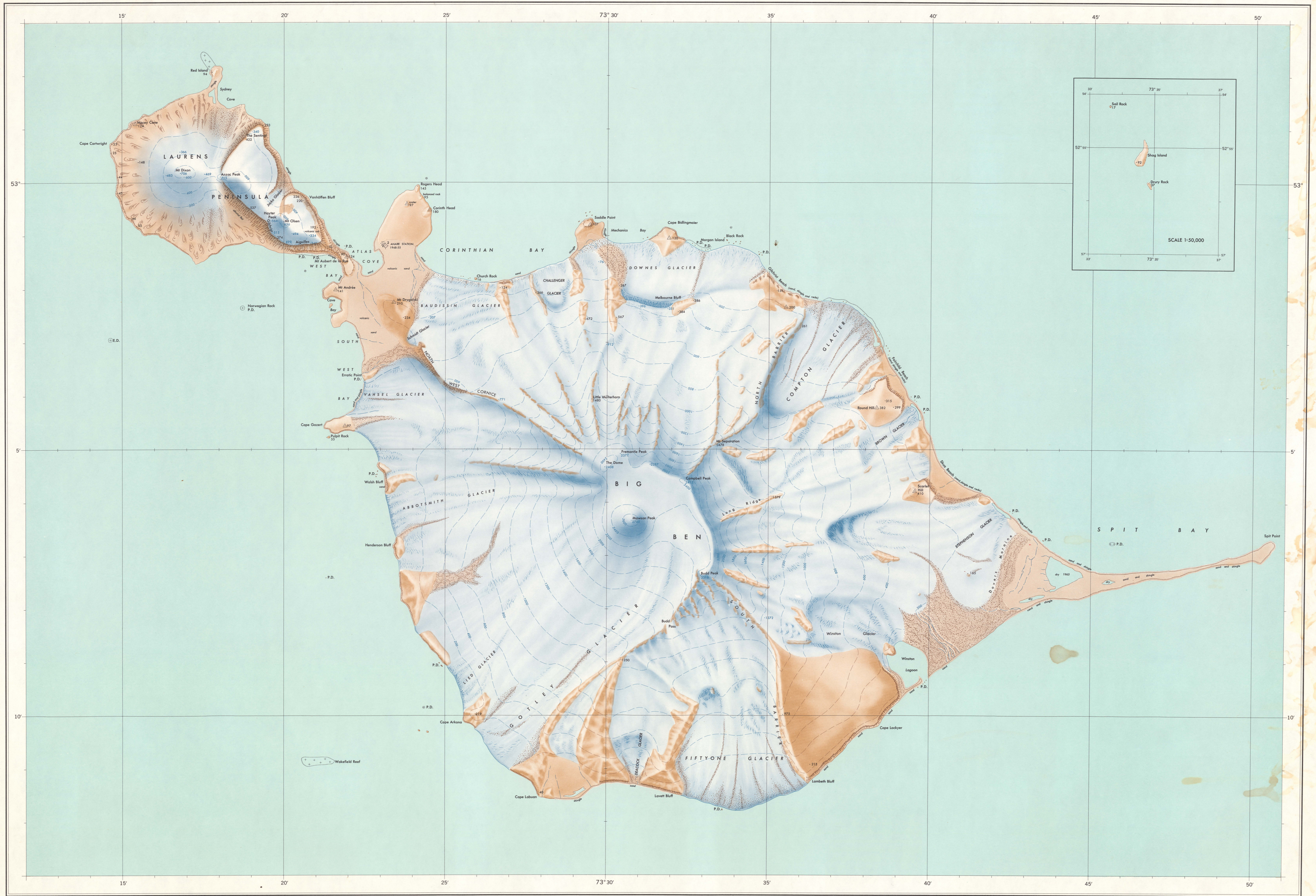


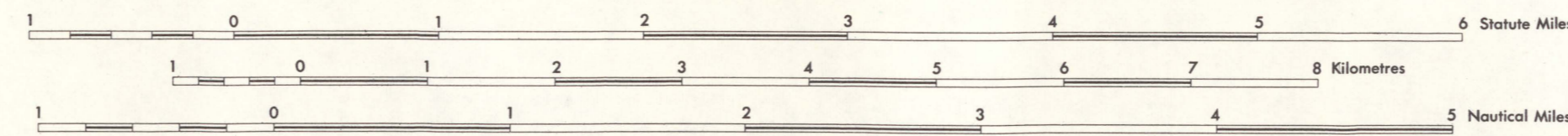
HEARD ISLAND AUSTRALIAN TERRITORY



NMP/64/38

Magnetic Declination 1964
approximately 53° 33' West,
increasing 12' annually.

SCALE 1:50,000



International Spheroid
Universal Transverse Mercator Projection
Zone 43

AUTOMATIC DISTRIBUTION

Names have been approved
by the Antarctic Names
Committee of Australia.

Beaches vary in width
from 10 to 50 metres.

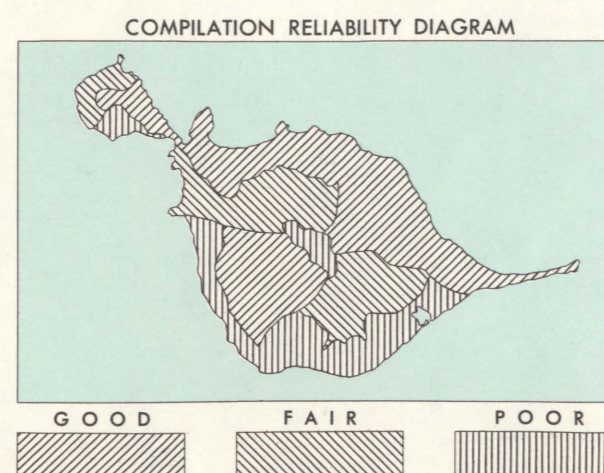
Up to elevations of about
90 metres, *Asplenium*,
mosses and grasses grow
on most ice-free rock areas.

CAUTION
Absence of the depiction of
crevasses does not necessarily
indicate a crevasse-free area.

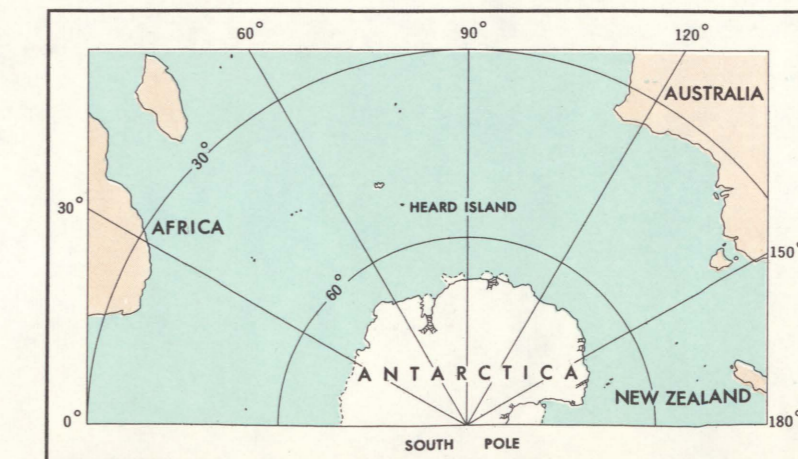
Produced by the Division of National
Mapping, Department of National
Development, Canberra, Australia.

Compiled from Australian National
Antarctic Research Expedition survey
1948 and additional information
obtained by ANARE to 1963.

FIRST EDITION — OCTOBER 1964



Heights in metres		Contour interval: 200 metres	
Sunken rock		Ice cliff or escarpment	
Limiting danger line		Rock cliff or escarpment	
Ice coastline		Melt stream and lagoon	
Ice-free coastline		Height on ice, rock	
Contour on ice or snow (approximate)		Astro control station	
Contour on ice-free area (approximate)		Survey control station	
		Ice-free area	
		Crevasse	
		Disturbed ice	
		Glacier	
		Beach	
		Coastal plain	
		Moraine	
		Lava flow	



HEARD ISLAND
AUSTRALIAN TERRITORY

PRINTED BY THE COMMONWEALTH GOVERNMENT PRINTER, CANBERRA, A.C.T.