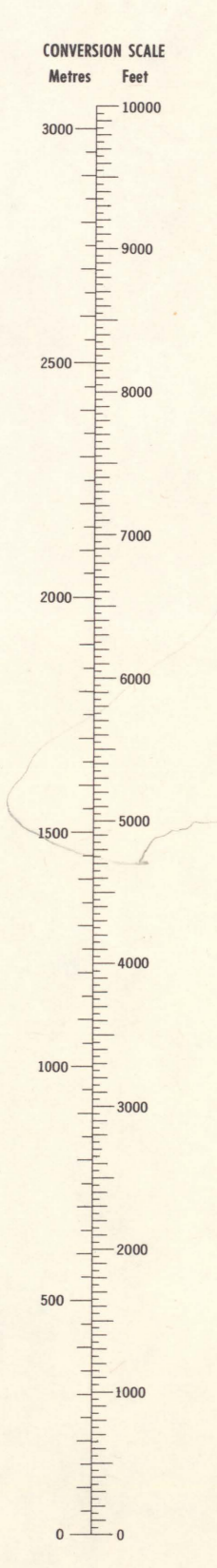
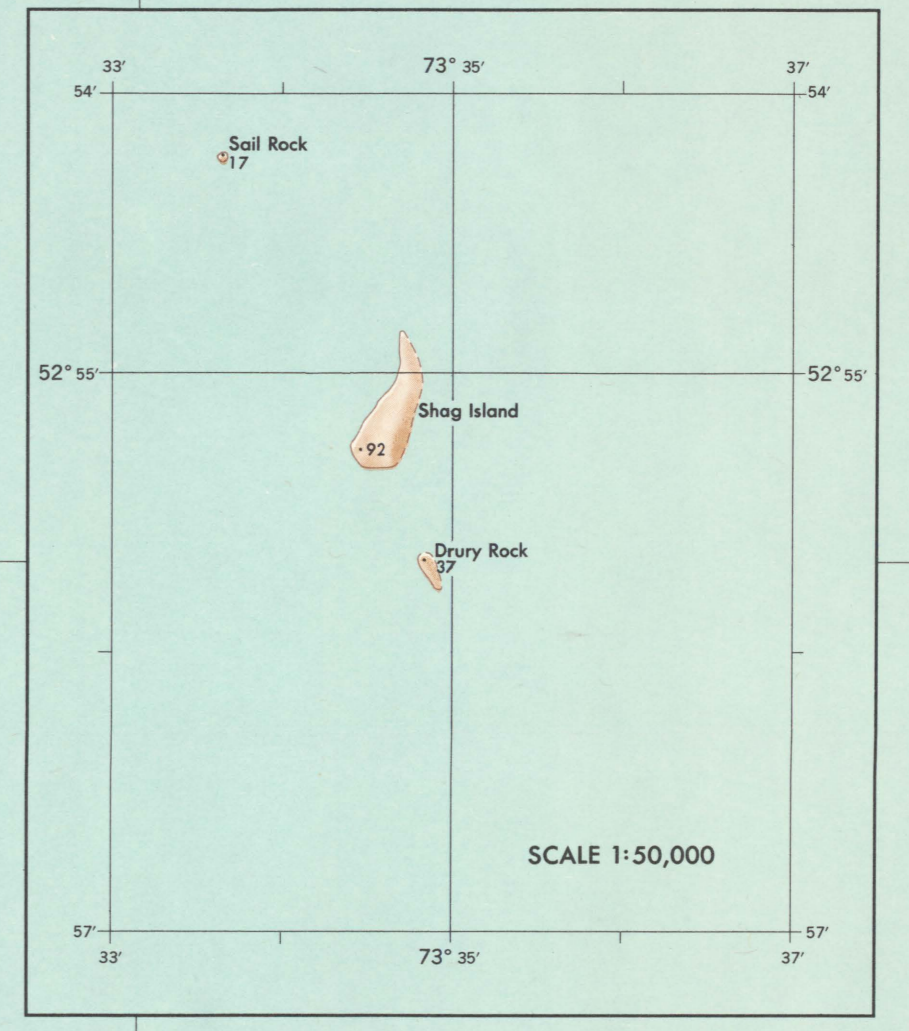
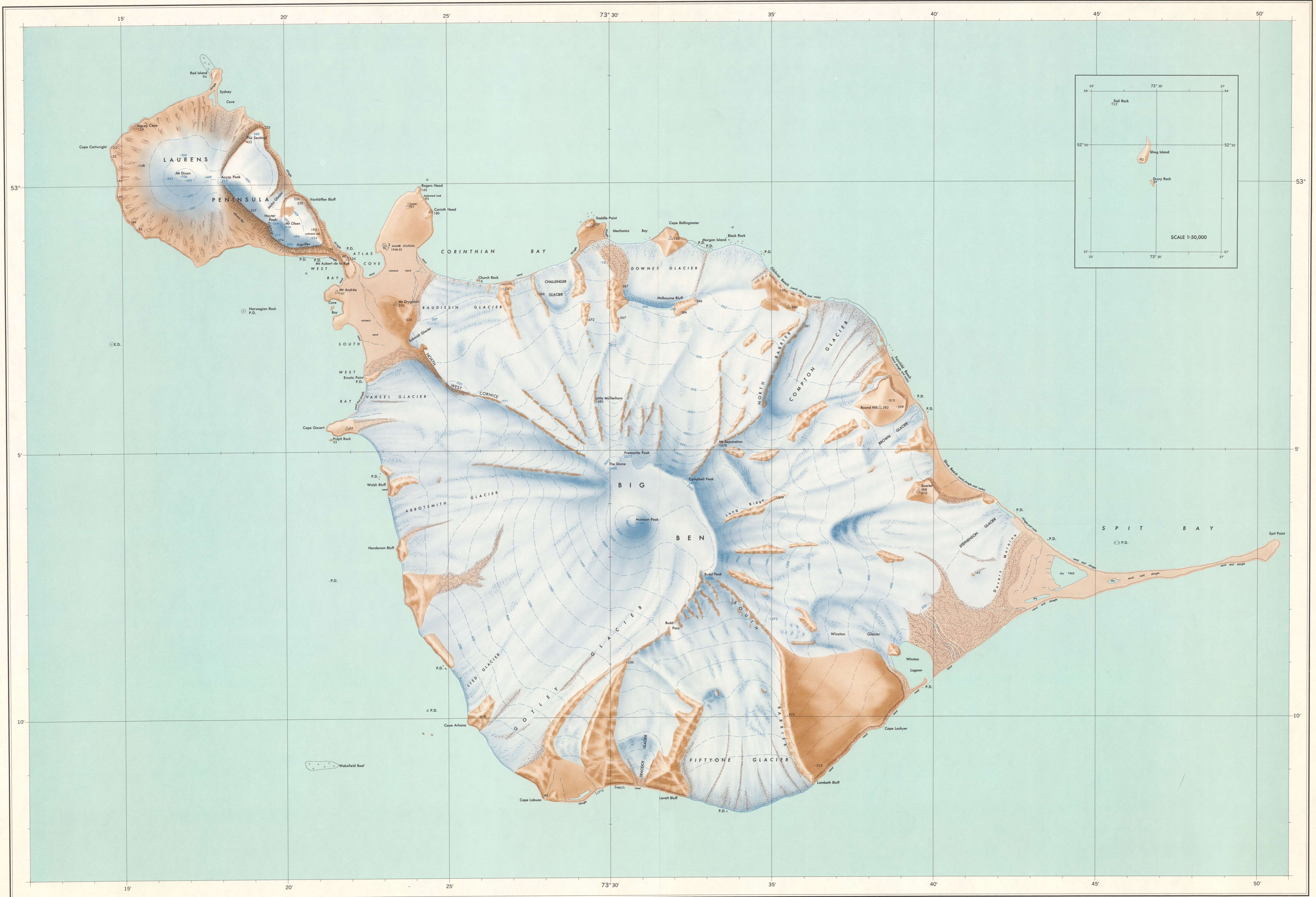


HEARD ISLAND AUSTRALIAN TERRITORY



Produced by the Division of National Mapping, Department of National Development, Canberra, Australia.

Compiled from Australian National Antarctic Research Expedition survey 1948 and additional information obtained by ANARE to 1953.

PRINTED BY THE COMMONWEALTH GOVERNMENT PRINTER, CANBERRA, A.C.T.

FIRST EDITION — OCTOBER 1954

Magnetic Declination 1954 approximately 53° 33' West, increasing 12' annually.

SCALE 1:50,000

International Spheroid
Universal Transverse Mercator Projection
Zone 43

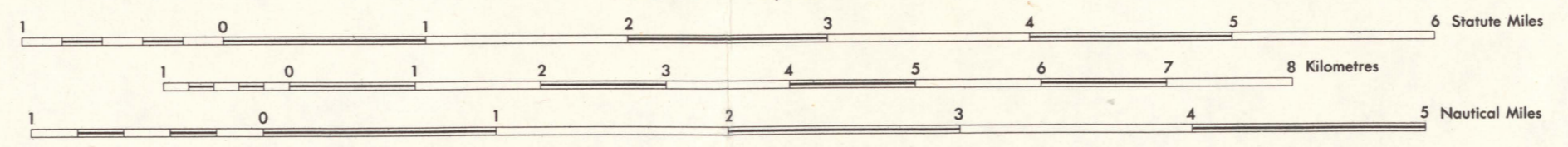
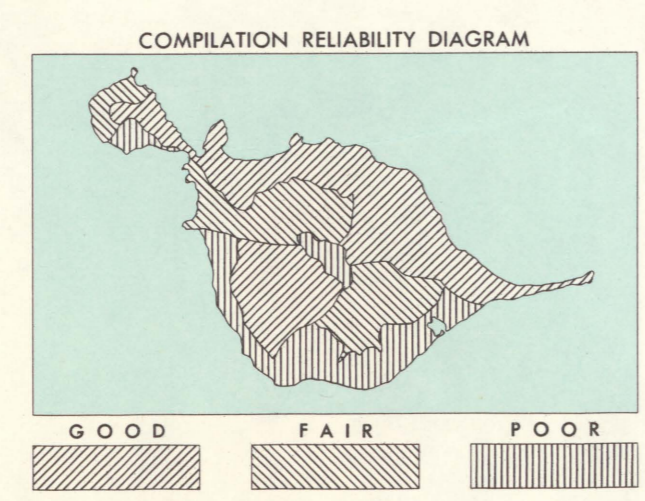
Names have been approved by the Antarctic Names Committee of Australia.

Beaches vary in width from 10 to 50 metres.

Up to elevations of about 90 metres, Ascarite, mosses and grasses grow on most ice-free rock areas.

CAUTION
Absence of the depiction of crevasses does not necessarily indicate a crevasse-free area.

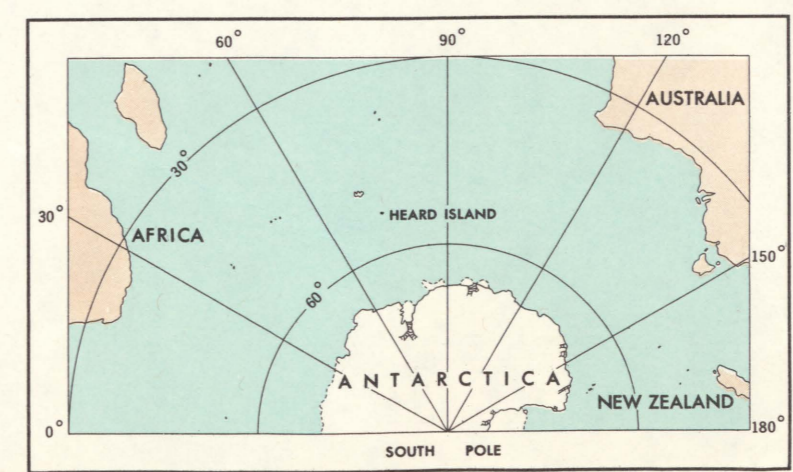
**HEARD ISLAND
AUSTRALIAN TERRITORY**



Heights in metres
Contour interval: 200 metres

LEGEND

Sunken rock	Ice cliff or escarpment	Ice-free area	Beach
Limiting danger line	Rock cliff or escarpment	Crevasses	Coastal plain
Ice coastline	Melt stream and lagoon	Disturbed ice	Marine
Ice-free coastline	Height on ice, rock	Glacier	Lava flow
Contour on ice or snow (approximate)	Astro control station		
Contour on ice-free area (approximate)	Survey control station		



785/1/19

AUSS Mapcat no. 27