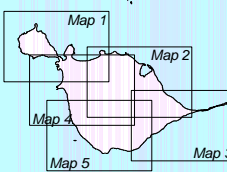


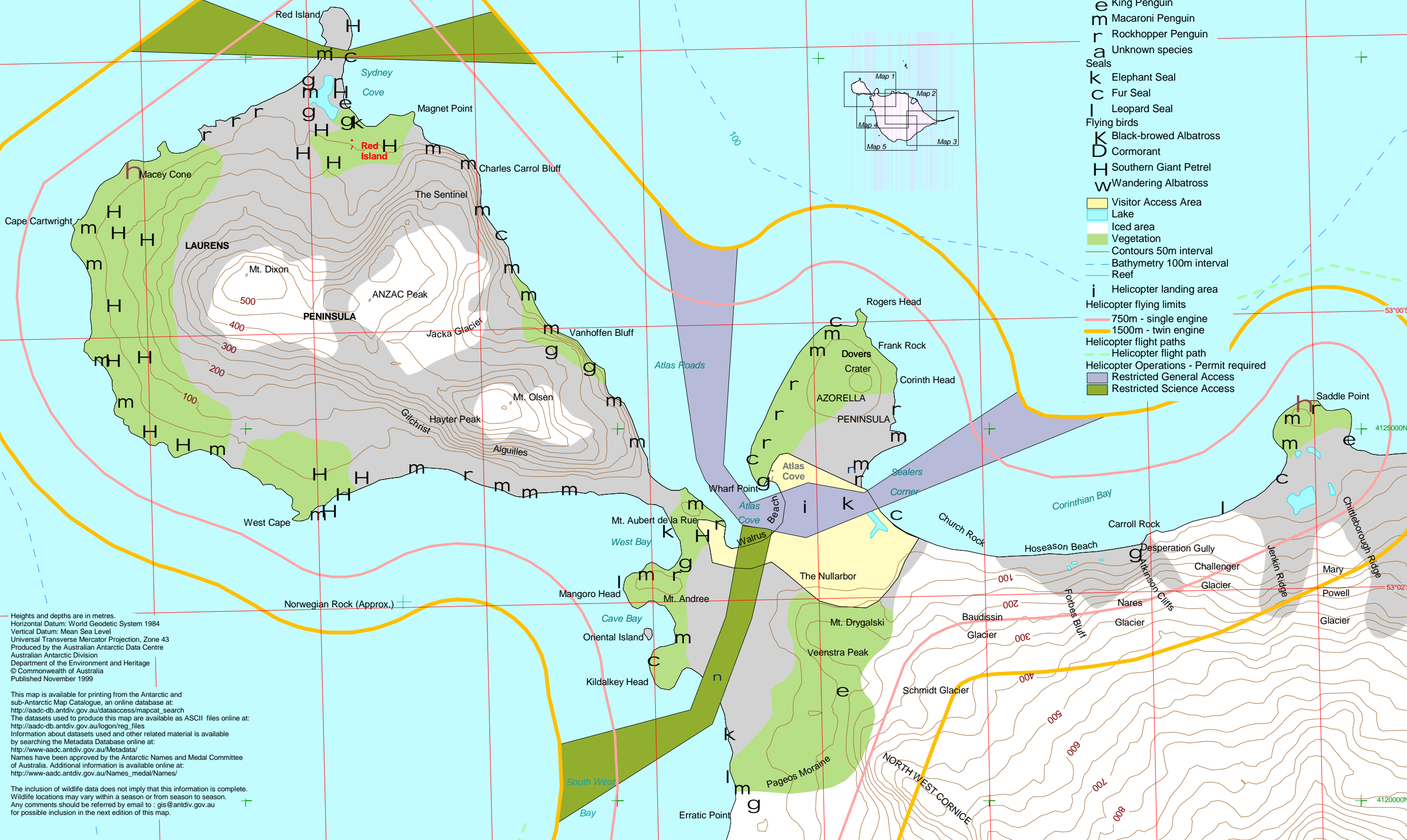
# Heard Island Map 1 of 5

500 0 500 1000 1500 2000 2500 Metres

1:50 000



- Spot height
- h** Volcanic cone
- n** Grave
- Shelter
  - Site of an apple hut
  - An old building may still be standing for emergency shelter at Atlas Cove.
  - No shelter at Spit Bay.
- Penguins
  - g** Gentoo Penguin
  - e** King Penguin
  - m** Macaroni Penguin
  - r** Rockhopper Penguin
  - a** Unknown species
- Seals
  - k** Elephant Seal
  - c** Fur Seal
  - l** Leopard Seal
- Flying birds
  - K** Black-browed Albatross
  - D** Cormorant
  - H** Southern Giant Petrel
  - w** Wandering Albatross
- Visitor Access Area
  - Yellow shaded area
- Lake
  - Light blue shaded area
- Iced area
  - White shaded area
- Vegetation
  - Green shaded area
- Contours 50m interval
  - Brown lines
- Bathymetry 100m interval
  - Blue dashed lines
- Reef
  - Blue dashed line
- i** Helicopter landing area
- Helicopter flying limits
  - Red line: 750m - single engine
  - Yellow line: 1500m - twin engine
- Helicopter flight paths
  - Green dashed line: Helicopter flight path
- Helicopter Operations - Permit required
  - Purple shaded area: Restricted General Access
  - Dark green shaded area: Restricted Science Access



Heights and depths are in metres.  
 Horizontal Datum: World Geodetic System 1984  
 Vertical Datum: Mean Sea Level  
 Universal Transverse Mercator Projection, Zone 43  
 Produced by the Australian Antarctic Data Centre  
 Australian Antarctic Division  
 Department of the Environment and Heritage  
 © Commonwealth of Australia  
 Published November 1999

This map is available for printing from the Antarctic and sub-Antarctic Map Catalogue, an online database at:  
[http://aacd-db.antdiv.gov.au/dataaccess/mapcat\\_search](http://aacd-db.antdiv.gov.au/dataaccess/mapcat_search)  
 The datasets used to produce this map are available as ASCII files online at:  
[http://aacd-db.antdiv.gov.au/logon/reg\\_files](http://aacd-db.antdiv.gov.au/logon/reg_files)  
 Information about datasets used and other related material is available by searching the Metadata Database online at:  
<http://www-aadc.antdiv.gov.au/Metadata/>  
 Names have been approved by the Antarctic Names and Medal Committee of Australia. Additional information is available online at:  
[http://www-aadc.antdiv.gov.au/Names\\_medal/Names/](http://www-aadc.antdiv.gov.au/Names_medal/Names/)

The inclusion of wildlife data does not imply that this information is complete. Wildlife locations may vary within a season or from season to season. Any comments should be referred by email to : [gis@antdiv.gov.au](mailto:gis@antdiv.gov.au) for possible inclusion in the next edition of this map.