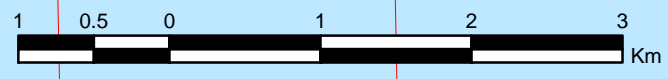


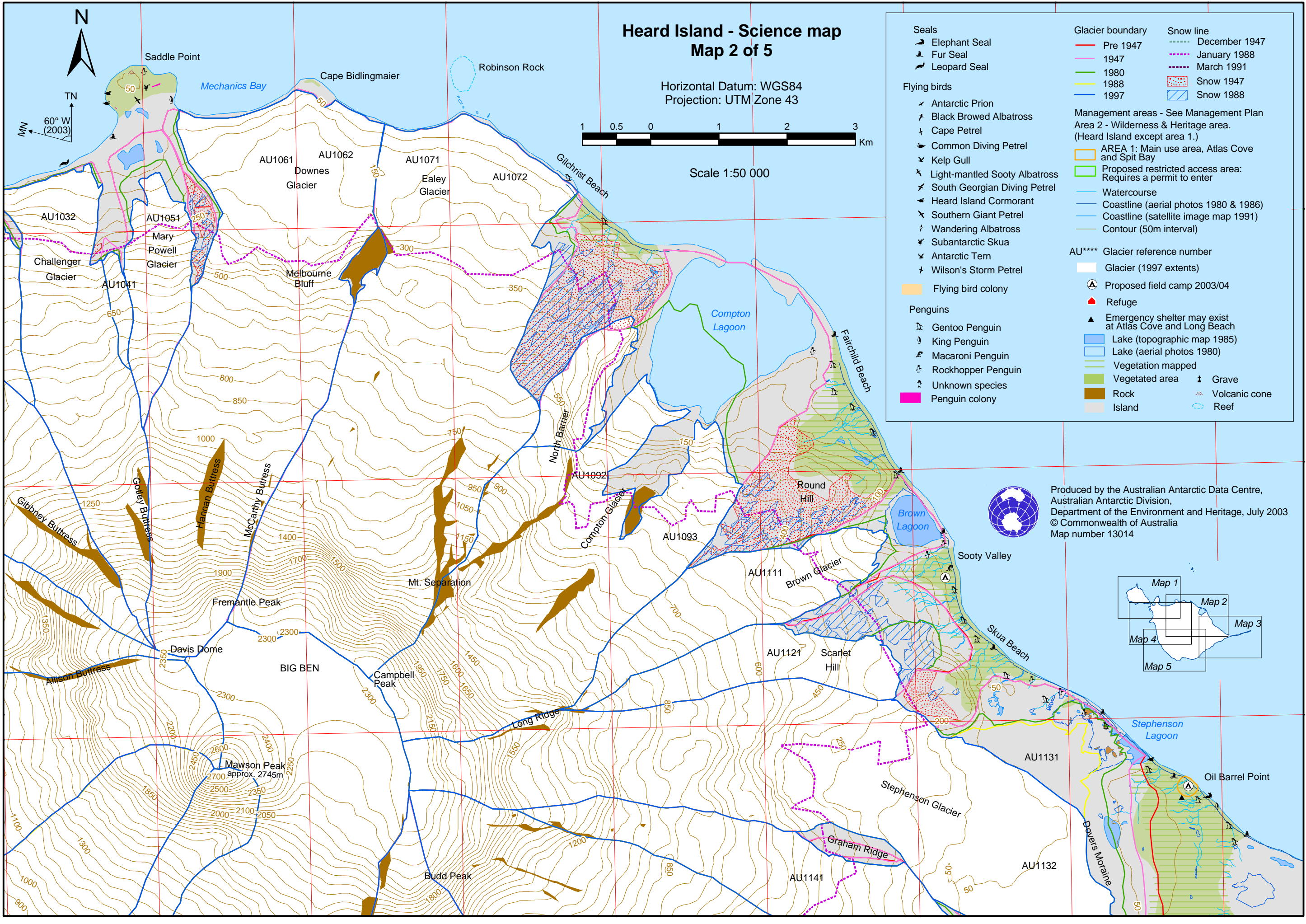
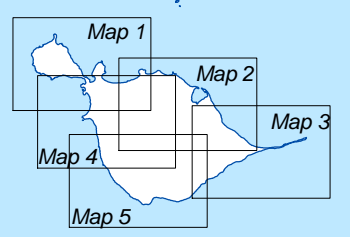
Heard Island - Science map Map 2 of 5

Horizontal Datum: WGS84
Projection: UTM Zone 43



Seals Elephant Seal Fur Seal Leopard Seal	Glacier boundary Pre 1947 1947 1980 1988 1997	Snow line December 1947 January 1988 March 1991 Snow 1947 Snow 1988
Flying birds Antarctic Prion Black Browed Albatross Cape Petrel Common Diving Petrel Kelp Gull Light-mantled Sooty Albatross South Georgian Diving Petrel Heard Island Cormorant Southern Giant Petrel Wandering Albatross Subantarctic Skua Antarctic Tern Wilson's Storm Petrel	Management areas - See Management Plan Area 2 - Wilderness & Heritage area. (Heard Island except area 1.) AREA 1: Main use area, Atlas Cove and Spit Bay Proposed restricted access area: Requires a permit to enter Watercourse Coastline (aerial photos 1980 & 1986) Coastline (satellite image map 1991) Contour (50m interval)	AU**** Glacier reference number Glacier (1997 extents) Proposed field camp 2003/04 Refuge Emergency shelter may exist at Atlas Cove and Long Beach Lake (topographic map 1985) Lake (aerial photos 1980) Vegetation mapped Vegetated area Rock Island
Penguins Gentoo Penguin King Penguin Macaroni Penguin Rockhopper Penguin Unknown species Penguin colony	Grave Volcanic cone Reef	

Produced by the Australian Antarctic Data Centre,
Australian Antarctic Division,
Department of the Environment and Heritage, July 2003
© Commonwealth of Australia
Map number 13014



73°30'0"E 73°32'0"E 73°34'0"E 73°36'0"E 73°38'0"E 73°40'0"E 73°42'0"E 73°44'0"E

53°20'S 53°40'S 53°60'S