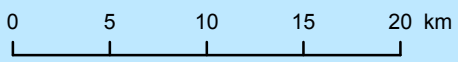
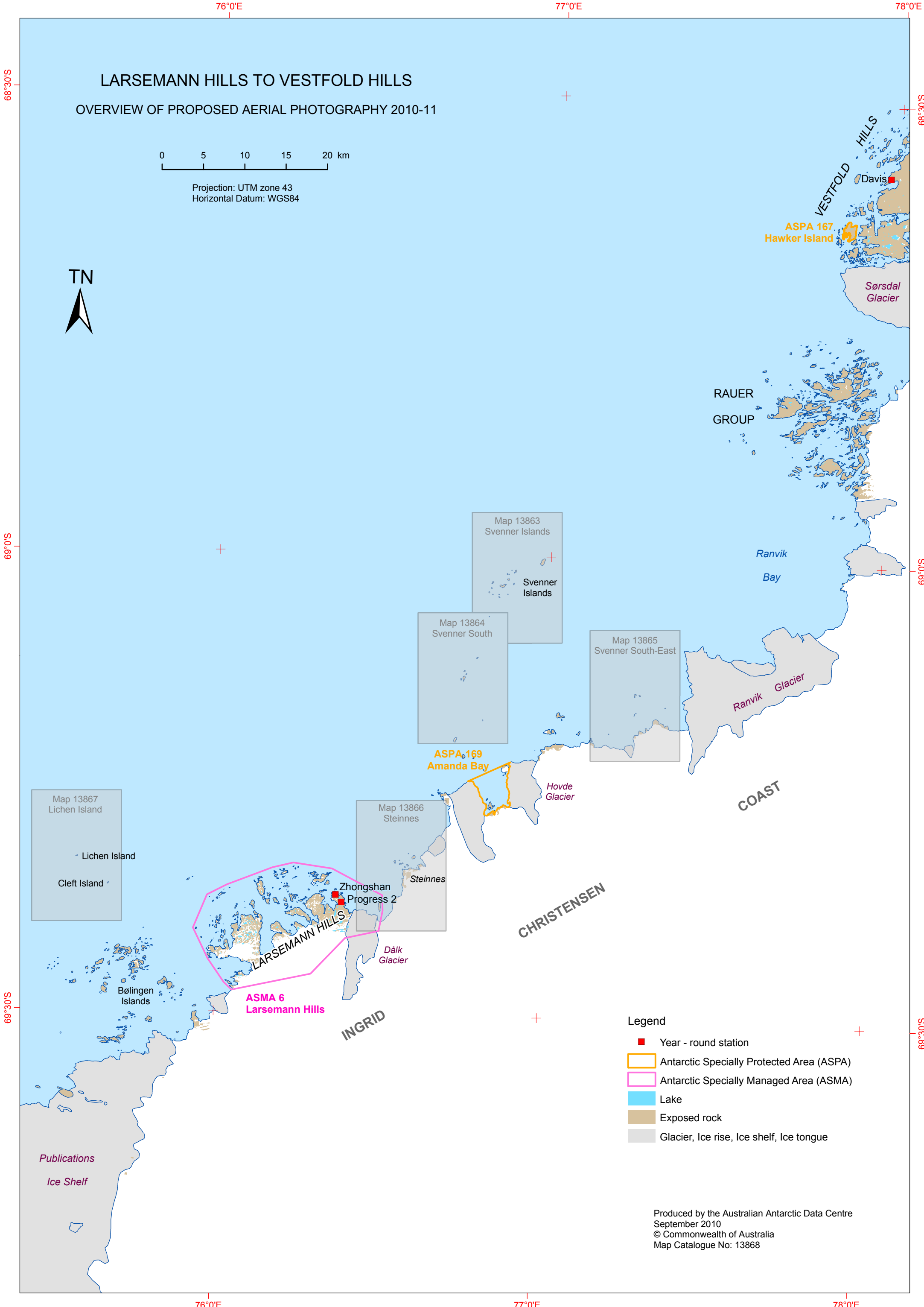


LARSEMANN HILLS TO VESTFOLD HILLS

OVERVIEW OF PROPOSED AERIAL PHOTOGRAPHY 2010-11



Projection: UTM zone 43
Horizontal Datum: WGS84



Legend

- Year - round station
- ▭ Antarctic Specially Protected Area (ASPAs)
- ▭ Antarctic Specially Managed Area (ASMA)
- Lake
- Exposed rock
- Glacier, Ice rise, Ice shelf, Ice tongue

Produced by the Australian Antarctic Data Centre
September 2010
© Commonwealth of Australia
Map Catalogue No: 13868