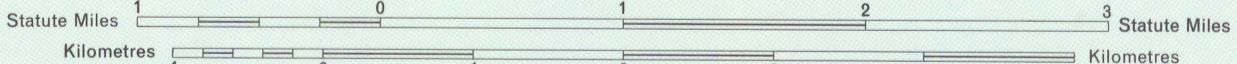


MACQUARIE ISLAND

TASMANIA

SCALE 1:50,000

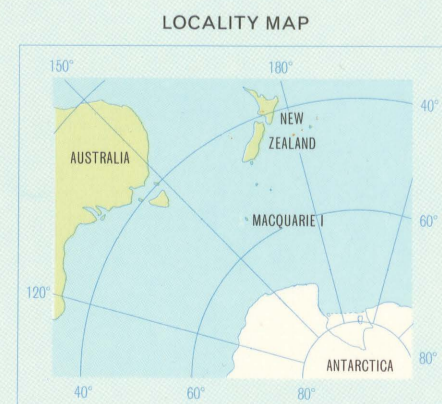


COMPILATION
Oblique air photography and terrestrial photography; Australian National Antarctic Research Expeditions 1947-1969.
Horizontal and vertical control: ANARE surveys 1950, 1958 & 1969.
Supplementary information: Australian Antarctic Expedition Surveys 1911-1913, British Admiralty Chart No. 1022.

CONTOUR INTERVAL 50 METRES
ELEVATIONS IN METRES
VERTICAL DATUM: MEAN SEA LEVEL
TRANSVERSE MERCATOR PROJECTION
AUSTRALIAN NATIONAL SPHEROID
Magnetic Declination 1970.0 at ANARE Station 27°06' East increasing 9' annually.

Names have been approved by the Nomenclature Board of Tasmania.
Produced by the Division of National Mapping, Department of National Development, Canberra, Australia.
FIRST EDITION NOVEMBER 1971

LEGEND	
Limiting danger line	Contours
Rock, bare or awash	Cliff coincident with contours
Reef	Cliff between contours
Ledge	Foot track
Coastline	Building
Creek	Control station
Lake	Spot Elevation
Hillock, onshore rock	



CONVERSION TABLE

METRES TO FEET
1 = 3.281
2 = 6.562
3 = 9.843
4 = 13.124
5 = 16.405
6 = 19.686
7 = 22.967
8 = 26.248
9 = 29.529
1 FOOT = 0.3048 METRES

