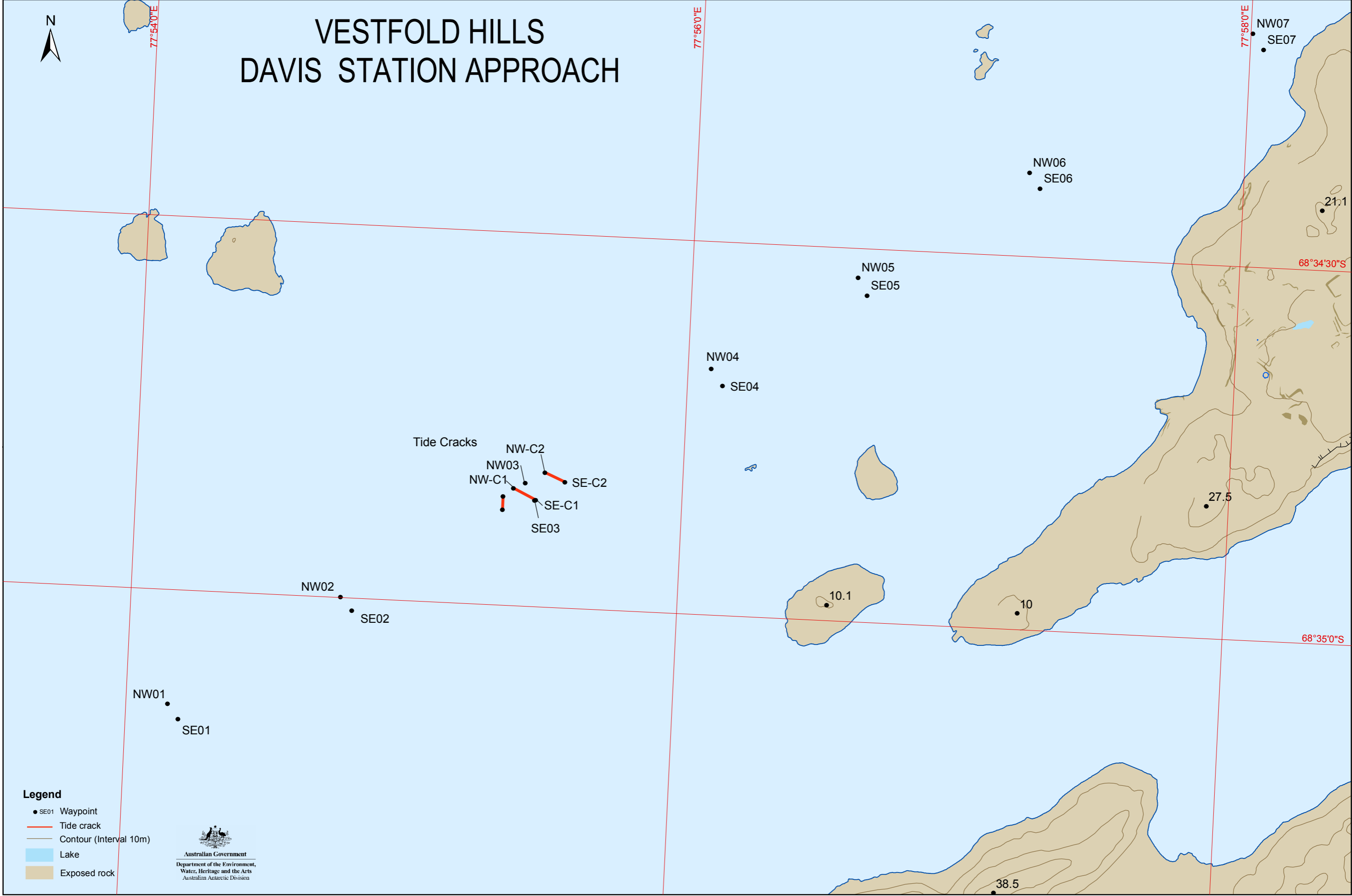


# VESTFOLD HILLS DAVIS STATION APPROACH



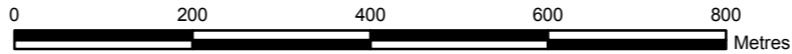
**Legend**

- SE01 Waypoint
- Tide crack
- Contour (Interval 10m)
- Lake
- Exposed rock



Horizontal Datum: WGS84  
Projection: UTM Zone 43

Scale 1: 8 500



Produced by the Australian Antarctic Data Centre, Oct 2008  
Australian Antarctic Division © Commonwealth of Australia  
Map Catalogue No: 13561