

# Vestfold Hills

## Map 2 of 5

Horizontal Datum: WGS84  
Projection: UTM Zones 43 and 44

Scale 1 : 50 000

Produced by the Australian Antarctic Data Centre  
September 2005, Map Catalogue Number: 13152

Zone 43  
Zone 44

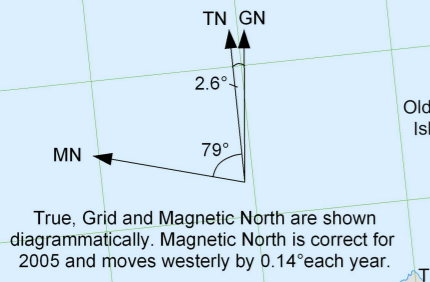
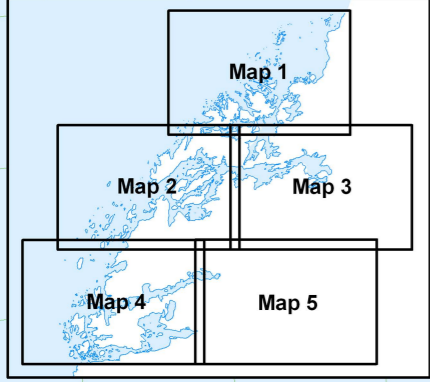
### Legend

- 79 Spot height
- Waypoint
- ▲ Monument
- Mast
- ◆ Refuge
- (H) (H) Helicopter landing area with / without facilities
- Stream
- Flow line
- Crevasse
- Route
- Vehicular track
- Most tracks beyond station limits are closed to vehicles except for search and rescue purposes.
- Ice cliff
- Rock cliff
- Contour (20m interval)
- Contour (100m interval)
- Depression contour
- Lake (Height above or below sea level)
- Saline lake (>3 grams/litre salt)
- Moraine
- Ice
- Ice-free area

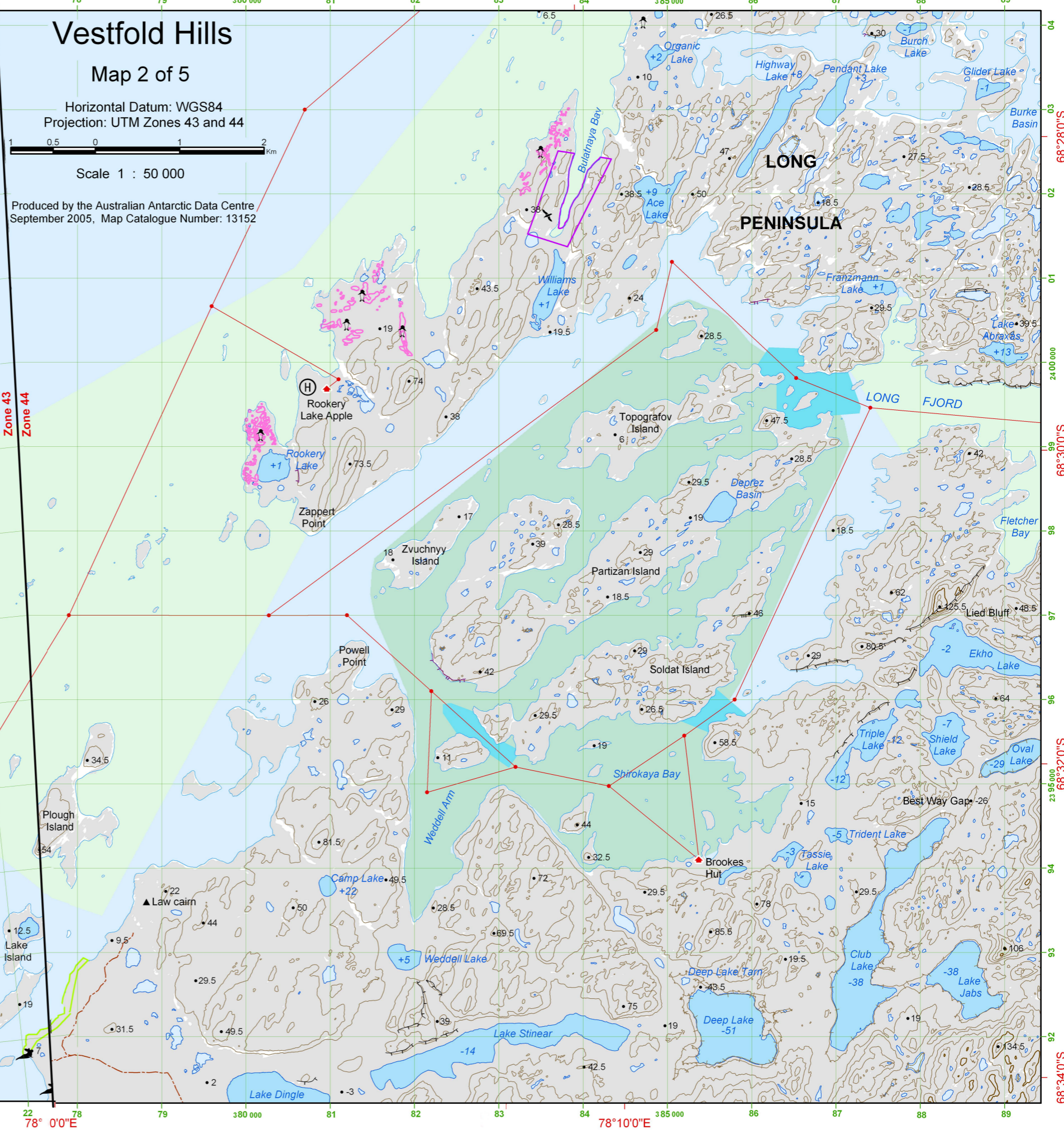
### Management Zones

- Station limits  
Travel outside station limits requires Station Leader approval.
- Limit of Station Operational Area
- Antarctic Specially Protected Area No. 143  
Entry is prohibited without a permit. All activities must be in accordance with the management plan.
- Sensitive Area
- Lichen
- Moss
- Fossilised seaweed beds and calcareous tubes  
No camping at Lichen Lake and Mossel Lake. Entry to Hawker and Magnetic Island is restricted.
- Danger: Hazardous creek under snow/ice
- Danger: Hazardous sea ice/tidal race. No travel on ice
- Thin ice. Melts out early. Check ice thickness
- Southern Elephant Seal moult location (Feb - May)
- Main Weddell Seal pupping area (Sept - Nov)
- Minor Weddell Seal pupping area (Sept - Nov)  
Weddell seals may be found on sea-ice between the Sørdsdal Glacier and Wyatt Earp Is, especially during the moult period (Dec - Mar)
- Adélie Penguin colony
- Cape Petrel colony
- Giant-petrel colony

CAUTION: Absence of the depiction of crevasses does not necessarily indicate a crevasse-free area.



Western limit of Station Operational Area is 5 km to seaward



77°50'0"E 16 17 18 19 20 21 22 78° 0'0"E 78 79 380 000 81 82 83 78°10'0"E 385 000 86 87 88 89 68°32'0"S 23 95 000 94 93 92 68°30'0"S 24 00 000 99 98 97 96 95 68°28'0"S 24 00 000 03 02 01 00 04