

Vestfold Hills

Map 4 of 5

Edition 5

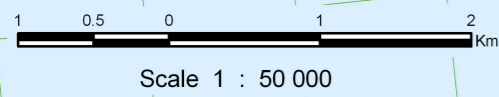
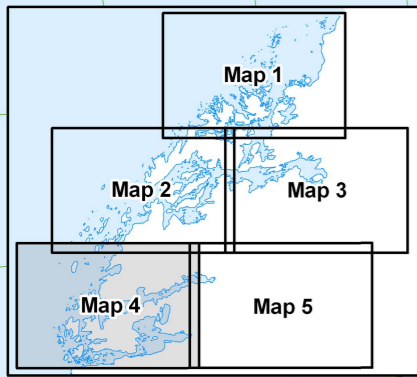
Horizontal Datum: WGS84
Projection: UTM Zones 43 and 44

Produced by the Australian Antarctic Data Centre
July 2008, Map Catalogue Number: 13485



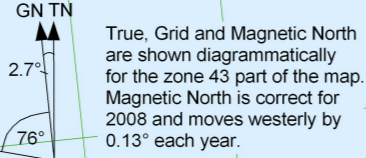
Australian Government
Department of the Environment,
Water, Heritage and the Arts
Australian Antarctic Division

For more detail see:
Davis Station Recreation Limits map
Map No. 13387

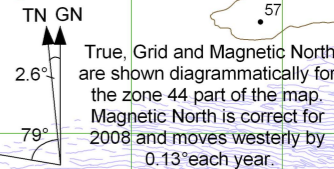


Legend

- 79 Spot height
 - BA02 Waypoint
 - ▲ Monument
 - Mast
 - ◆ Refuge
 - ⊕ ⊖ Helicopter landing area with / without facilities
 - ⊞ Moraine
 - Ice
 - Ice-free area
 - CAUTION: Absence of the depiction of crevasses does not necessarily indicate a crevasse-free area.
 - Lake (Height above or below sea level)
 - Saline lake (>3 grams/litre salt)
 - ⬆ Adélie Penguin colony
 - ⬆ Cape Petrel colony
 - ⬆ Giant-petrel colony
 - 🐧 Southern Elephant Seal moult location (Feb - May)
 - 🐧 Main Weddell Seal pupping area (Sept - Nov)
 - 🐧 Minor Weddell Seal pupping area (Sept - Nov)
 - 🐧 Weddell seals may be found on sea-ice between the Sørsdal Glacier and Wyatt Earp Is, especially during the moult period (Dec - Mar)
 - Management Zones
 - Extent of Davis Station Recreation Limits map
 - Limit of Station Operational Area
 - Antarctic Specially Protected Area Entry is prohibited without a permit. All activities must be in accordance with the management plan.
 - Sensitive Area
 - Lichen
 - Moss
 - Fossilised seaweed beds and calcareous tubes
 - No camping at Lichen Lake and Mossel Lake. Entry to Hawker and Magnetic Island is restricted.
 - Danger: Hazardous creek under snow/ice
 - Danger: Hazardous sea ice/tidal race. No travel on ice
 - Thin ice. Melts out early. Check ice thickness
- Stream
Flow line
Crevasse
Ice cliff
Rock cliff
Route standard/alternate
Vehicular track
Most tracks beyond station limits are closed to vehicles except for search and rescue purposes.
Contour (20m interval)
Contour (100m interval)
Depression contour



True, Grid and Magnetic North are shown diagrammatically for the zone 43 part of the map. Magnetic North is correct for 2008 and moves westerly by 0.13° each year.



True, Grid and Magnetic North are shown diagrammatically for the zone 44 part of the map. Magnetic North is correct for 2008 and moves westerly by 0.13° each year.

Western limit of Station Operational Area is 5 km to seaward

Southern limit of Station Operational Area is along the northern edge of the Sørsdal Glacier

