

True, Grid and Magnetic North are shown diagrammatically for the centre of the map. Magnetic North is correct for Jan 2012 and moves westerly by about 0.14° each year.

# Vestfold Hills

## Map 5 of 5

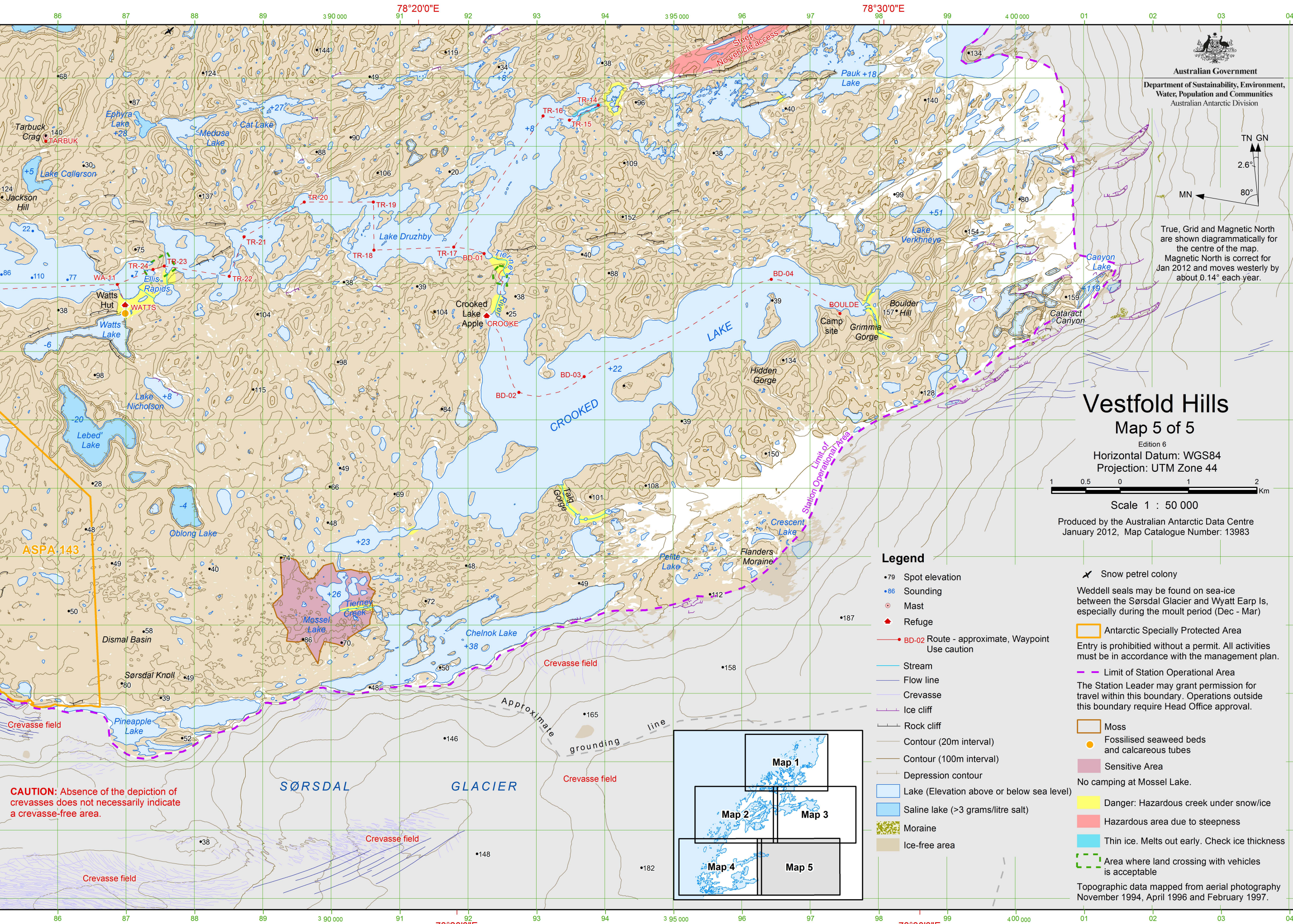
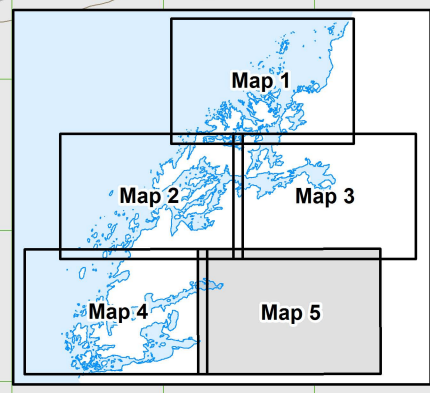
Edition 6  
 Horizontal Datum: WGS84  
 Projection: UTM Zone 44



Scale 1 : 50 000  
 Produced by the Australian Antarctic Data Centre  
 January 2012, Map Catalogue Number: 13983

### Legend

- 79 Spot elevation
- 86 Sounding
- Mast
- ◆ Refuge
- BD-02 Route - approximate, Waypoint Use caution
- Stream
- Flow line
- Crevasse
- Ice cliff
- Rock cliff
- Contour (20m interval)
- Contour (100m interval)
- Depression contour
- Lake (Elevation above or below sea level)
- Saline lake (>3 grams/litre salt)
- Moraine
- Ice-free area
- ✂ Snow petrel colony
- Weddell seals may be found on sea-ice between the Sørsdal Glacier and Wyatt Earp Is, especially during the moult period (Dec - Mar)
- Antarctic Specially Protected Area  
Entry is prohibited without a permit. All activities must be in accordance with the management plan.
- Limit of Station Operational Area  
The Station Leader may grant permission for travel within this boundary. Operations outside this boundary require Head Office approval.
- Moss
- Fossilised seaweed beds and calcareous tubes
- Sensitive Area  
No camping at Mossel Lake.
- Danger: Hazardous creek under snow/ice
- Hazardous area due to steepness
- Thin ice. Melts out early. Check ice thickness
- Area where land crossing with vehicles is acceptable



**CAUTION:** Absence of the depiction of crevasses does not necessarily indicate a crevasse-free area.

SØRSDAL GLACIER

78°20'0"E 78°30'0"E

68°34'0"S  
68°36'0"S  
68°38'0"S  
68°40'0"S

2390000  
2380000  
2370000  
2360000