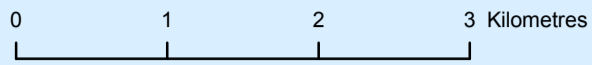


# VESTFOLD HILLS

## PROPOSED AERIAL PHOTOGRAPHY OF PENGUIN COLONIES 2009-10 MAP 2

Produced by the Australian Antarctic Data Centre  
October 2009, Map Catalogue Number: 13719  
© Commonwealth of Australia

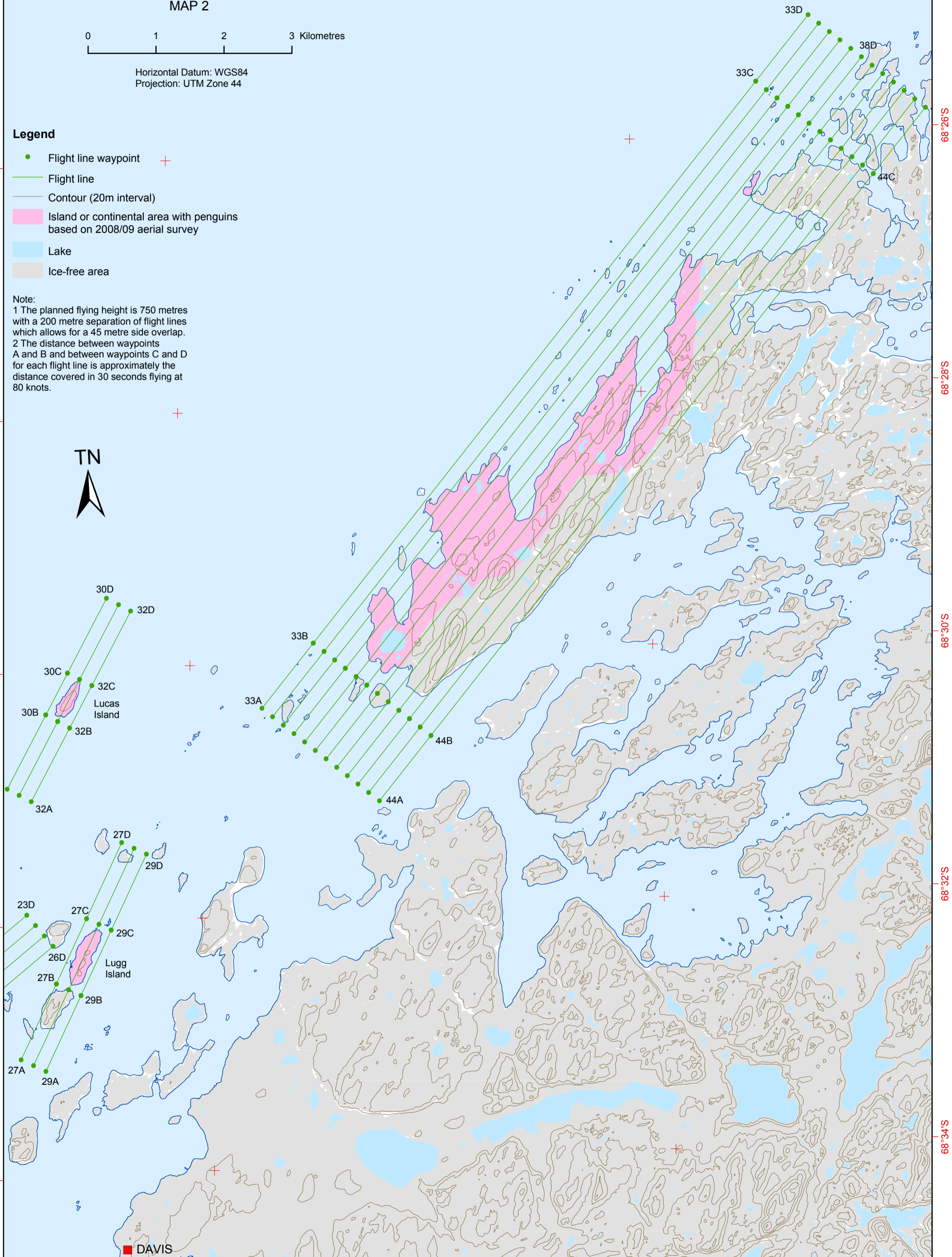


Horizontal Datum: WGS84  
Projection: UTM Zone 44

### Legend

- Flight line waypoint
- Flight line
- Contour (20m interval)
- Island or continental area with penguins based on 2008/09 aerial survey
- Lake
- Ice-free area

Note:  
1 The planned flying height is 750 metres with a 200 metre separation of flight lines which allows for a 45 metre side overlap.  
2 The distance between waypoints A and B and between waypoints C and D for each flight line is approximately the distance covered in 30 seconds flying at 80 knots.



DAVIS

78°0'E

78°10'E

68°24'S

68°26'S

68°28'S

68°30'S

68°32'S

68°34'S

68°26'S

68°28'S

68°30'S

68°32'S

68°34'S