

77°45'0"E 77°46'0"E 77°47'0"E 77°48'0"E 77°49'0"E 77°50'0"E 77°51'0"E 77°52'0"E 77°53'0"E 77°54'0"E 77°55'0"E 77°56'0"E 77°57'0"E 77°58'0"E 77°59'0"E 78°0'0"E 78°1'0"E 78°2'0"E 78°3'0"E 78°4'0"E

68°31'30"S 68°32'0"S 68°32'30"S 68°33'0"S 68°33'30"S 68°34'0"S 68°34'30"S 68°35'0"S 68°35'30"S 68°36'0"S

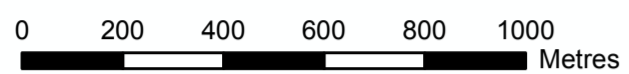


# VESTFOLD HILLS BATHYMETRY

MAP 1

EDITION 1

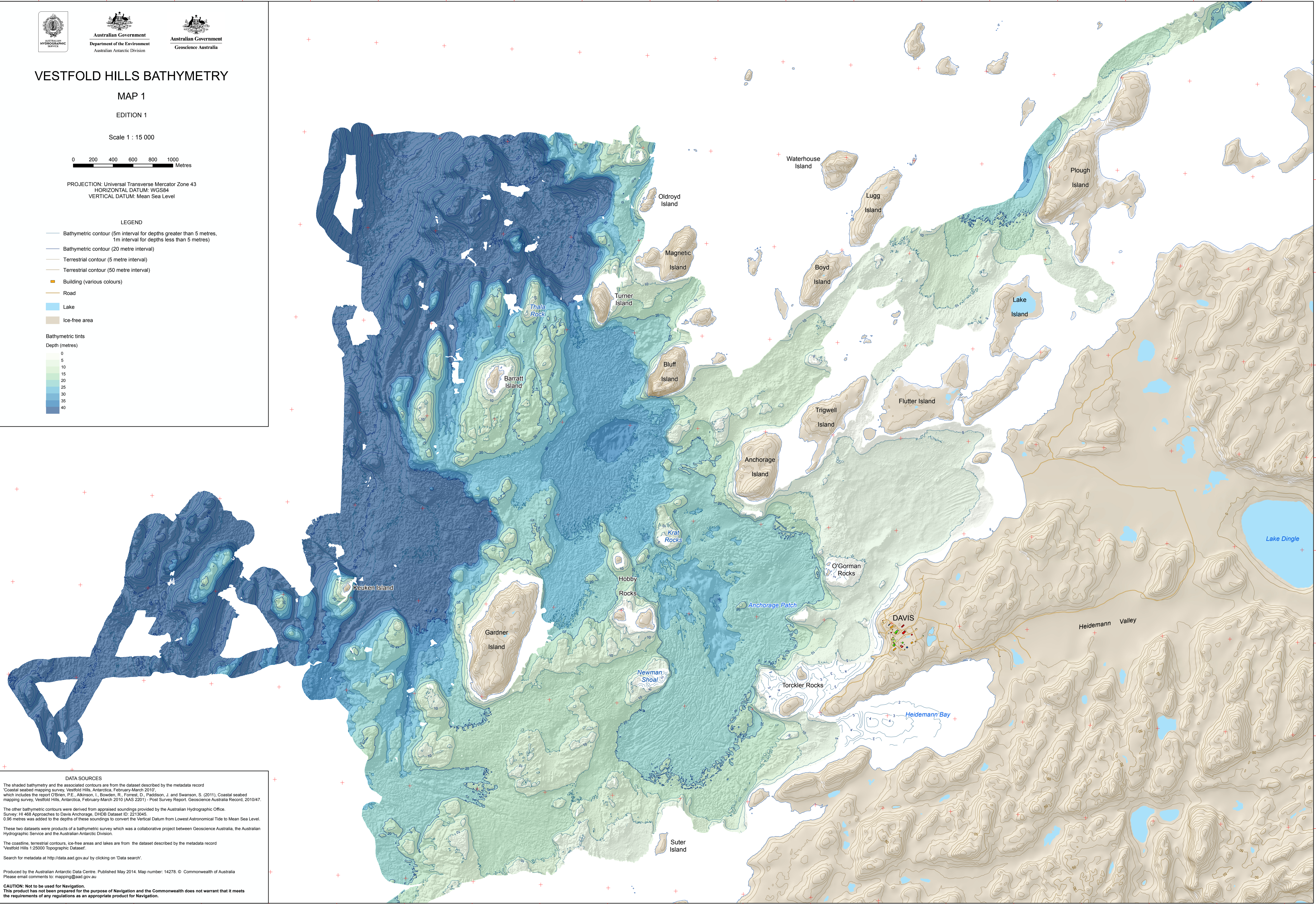
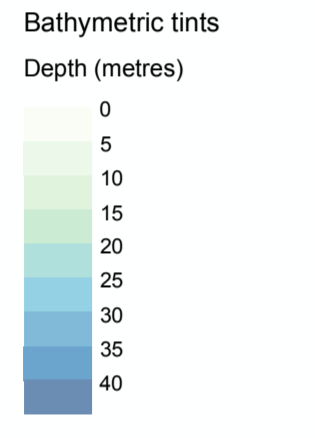
Scale 1 : 15 000



PROJECTION: Universal Transverse Mercator Zone 43  
HORIZONTAL DATUM: WGS84  
VERTICAL DATUM: Mean Sea Level

### LEGEND

- Bathymetric contour (5m interval for depths greater than 5 metres, 1m interval for depths less than 5 metres)
- Bathymetric contour (20 metre interval)
- Terrestrial contour (5 metre interval)
- Terrestrial contour (50 metre interval)
- Building (various colours)
- Road
- Lake
- Ice-free area



### DATA SOURCES

The shaded bathymetry and the associated contours are from the dataset described by the metadata record 'Coastal seabed mapping survey, Vestfold Hills, Antarctica, February-March 2010', which includes the report O'Brien, P.E., Atkinson, I., Bowden, R., Forrest, D., Paddison, J. and Swanson, S. (2011), Coastal seabed mapping survey, Vestfold Hills, Antarctica, February-March 2010 (AAS 2201) - Post Survey Report, Geoscience Australia Record, 2010/47.

The other bathymetric contours were derived from appraised soundings provided by the Australian Hydrographic Office. Survey: HI 468 Approaches to Davis Anchorage, DHDG Dataset ID: 2213045. 0.96 metres was added to the depths of these soundings to convert the Vertical Datum from Lowest Astronomical Tide to Mean Sea Level.

These two datasets were products of a bathymetric survey which was a collaborative project between Geoscience Australia, the Australian Hydrographic Service and the Australian Antarctic Division.

The coastline, terrestrial contours, ice-free areas and lakes are from the dataset described by the metadata record 'Vestfold Hills 1:25000 Topographic Dataset'.

Search for metadata at <http://data.aad.gov.au/> by clicking on 'Data search'.

Produced by the Australian Antarctic Data Centre. Published May 2014. Map number: 14278. © Commonwealth of Australia. Please email comments to: [mapping@aad.gov.au](mailto:mapping@aad.gov.au)

**CAUTION: Not to be used for Navigation.**  
This product has not been prepared for the purpose of Navigation and the Commonwealth does not warrant that it meets the requirements of any regulations as an appropriate product for Navigation.

77°45'0"E 77°46'0"E 77°47'0"E 77°48'0"E 77°49'0"E 77°50'0"E 77°51'0"E 77°52'0"E 77°53'0"E 77°54'0"E 77°55'0"E 77°56'0"E 77°57'0"E 77°58'0"E 77°59'0"E 78°0'0"E 78°1'0"E 78°2'0"E 78°3'0"E 78°4'0"E