

Windmill Islands

Map 3 of 5
Edition 12

Horizontal Datum: WGS84
Projection: UTM Zone 49



Scale 1 : 50 000

Produced by the Australian Antarctic Data Centre
September 2023, Map Catalogue No. 16009
Map available at: <http://data.aad.gov.au/aadc/mapcat/>
© Commonwealth of Australia 2023

Australian Government
Department of Climate Change,
the Environment and Water
Australian Antarctic Division

True, Grid and Magnetic North are shown diagrammatically for the centre of this map. Magnetic North is correct for September 2023 and moves westerly by about 0.29° per year.

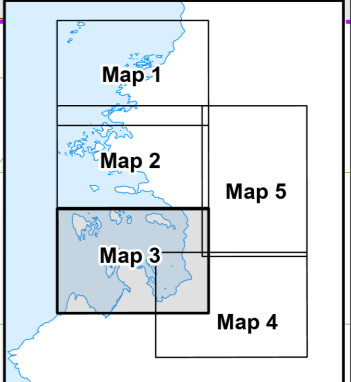
- *102 Spot elevation (m)
- ▲ Monument
- + Reef
- ◆ Refuge
- ◆ Emergency cache
- Inflatable Rescue Boat landing site
- x Automatic Weather Station (AWS)
- Front of an ice tongue
- Coastline
- Crevasse
- A-07 Route, Waypoint
- Route (approximate)
- All sea ice routes are approximate
- Ice cliff
- Rock cliff
- Contour (20m interval) definite/approximate
- Contour (100m interval) definite/approximate
- Lake
- Ice-free area
- Moraine
- Antarctic Specially Protected Area (ASP)
- Limit of Station Operational Area

- Adélie penguin colony
- Cape petrel nesting area
- Snow petrel nesting area
- South polar skua nesting area
- Southern fulmar nesting area
- Wilson's storm petrel nesting area
- Southern elephant seal haulout area (Jan-May)
- Weddell seal pupping area (Sep-Nov)

Note: Weddell seals may be present on sea ice to the fast ice edge

Sea Ice Travel Boundary
The Station Leader may grant permission for travel on sea ice up to this boundary. Sea ice travel outside this boundary requires Head Office approval.

Cliffs, crevasses, ice-free areas, lakes and moraines mapped from aerial photography, January 1994.



CAUTION: Absence of the depiction of hazards, including crevasses, does not necessarily indicate a hazard free area.