

Windmill Islands

Map 4 of 5

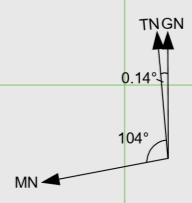
Edition 12

Horizontal Datum: WGS84
Projection: UTM Zone 49

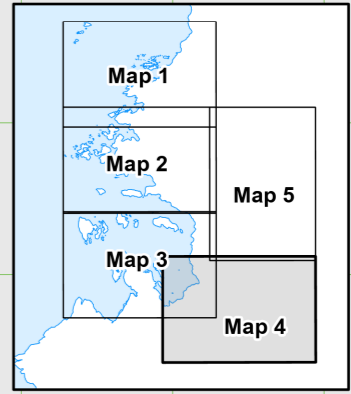


Scale 1 : 50 000

Produced by the Australian Antarctic Data Centre
September 2023, Map Catalogue No.16010
Map available at: <http://data.aad.gov.au/aadc/mapcat/>
© Commonwealth of Australia 2023



True, Grid and Magnetic North are shown diagrammatically for the centre of this map. Magnetic North is correct for December 2023 and moves westerly by about 0.29° per year.



CAUTION: Absence of the depiction of hazards, including crevasses, does not necessarily indicate a hazard free area.

- 102 Spot elevation (m)
- A-07 Route, Waypoint
- - - Route (approximate)
All sea ice routes are approximate
- Coastline
- Crevasse
- Ice cliff
- Rock cliff
- - - Contour (20m interval) definite/approximate
- - - Contour (100m interval) definite/approximate
- Ice-free area
- Moraine
- - - Limit of Station Operational Area
The Station Leader may grant permission for travel within this boundary. Operations outside this boundary require Head Office approval.
- Sea Ice Travel Boundary
The Station Leader may grant permission for travel on sea ice up to this boundary. Sea ice travel outside this boundary requires Head Office approval.
- Cliffs, crevasses, ice-free areas, lakes and moraines mapped from aerial photography, January 1994.
- Note: Weddell seals may be present on sea ice to the fast ice edge


Australian Government
Department of Climate Change, Energy,
the Environment and Water
Australian Antarctic Division